



FELIX

The Newspaper of Imperial College Union

PHEW! WHAT A SCORCHER!

Southside will be fitted with a sauna by the start of next term if plans put forward by the Estates are approved by the architects. £20,000 of College money has already been allocated for this work.

The plans put to the Southside Working Party at a meeting on Wednesday centred around the conversion of the old refectory for use as a gymnasium mainly for the martial arts societies which at present use the old gym in Beit. The floor is already suitable and eventually the new gym will be totally enclosed; until then the plan is to use a curtain across one end, separating it from a table tennis room where it will be possible to play the game to club competition standard—a facility so far lacking at IC.

New changing rooms are to be built adjoining the gymnasium, and saunas have been included in the plans, although these will be attached to the relevant changing rooms, and so will not be mixed. The old luggage storage rooms will be used as a weight-training room—all luggage from Southside Halls will have to be kept in the Linstead basement, which is being cleared at present, and anyone who is storing items in the basement of Linstead who is not a current resident should remove them within the next two weeks.

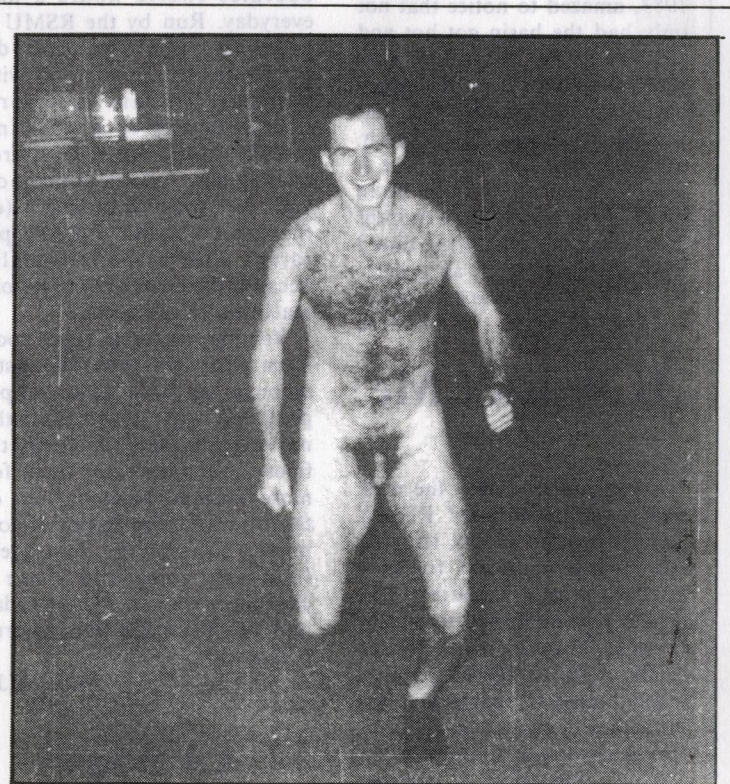
The next stage of the development of the Southside basement would probably include building new Squash Courts in the old Servery area. In addition discussions about the installation of a central laundry are under way.

All of the money for this project is being supplied from College rather than Union

funds, and Union representatives have apparently received assurances that the money will not be docked from the income from gravel mining at Harlington sports ground, which must, under the terms of the Governing Body, be used only for improving sports facilities at Imperial. Union Officers believe that the College's motive is to attract more students of high calibre by improving Imperial's sports and residence facilities.

The plans were put by Estates Secretary Don Clark to the Student Southside working party, which approved them. They will now go to the architects, who will inform College whether the plan is feasible within the allocated budget. If so, the work is expected to start on July 1 and finish in September.

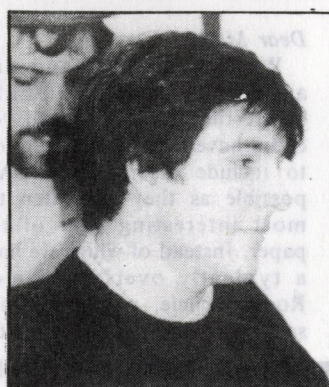
It is not yet clear who would be responsible for maintenance of the new facilities.



Not the FELIX Spot the Ball competition, but the publicity-conscious Paul Simion streaking along the walkway in an effort to be first in to the new sauna.



Tim Williams



Charles Peachey

Mines Elections

The results of the Royal School of Mines Union's elections were published late last term. Chris Crownshaw was elected unopposed as President, with Tim Williams as Vice-President and Charles Peachey as Honorary Secretary. The Honorary Junior Treasurer will be Ross Reid, and Lawrence Hartley will be Sports Officer.



Yawn!

Dear Martin

As someone, who occasionally goes to the Union Bar for alcoholic beverages, has on these occasions had the need to use the Gentlemen's Room adjacent to the Bar I was, on Friday April 1983, amazed to notice that not only had the basin got hot and cold running water but also there was soap. Even the hand-dryer was functional. All that was required was a nail brush, although had there been one it would probably have been pinched. In my eighteen months at College this is the first time I have witnessed such an event.

Yours in astonishment
Gareth Fish

It Wasn't Me

Dear Sir

I imagine that even the most ardent champions of FELIX would hardly claim that its reports are renowned for their accuracy and veracity. The article you published under the heading 'Warding off Lauwerys' in the issue of March 23 must surely, however, represent a new landmark in creative journalism. It was apparently a report of the Student Residence Committee meeting held on March 21 and included the following statements:

—If Mr J Lauwerys goes ahead with the plans he proposed at a student/staff committee on Monday...

—The meeting...had a double purpose: for the Union to question Mr Lauwerys on his report on residence management...

and finally, best of all,

—Mr Lauwerys seemed unable to bring forward very good

arguments in favour of the proposal except...

This latter inability may have had some bearing on the fact that I wasn't at the meeting at any point during the day, nor had it ever been intended that I should be present!

I remain a devoted reader.

Yours sincerely
John Lauwerys

Tea Mines

Sir

The Mines Coffee Room Attendant would like it to be known that A K Waner, all streaming hords of parasitic students, ICU hacks, physicists, disgruntled Life Science students and staff, and all other social misfits, plus Mrs Shirley Veary and Professor Wood, will *all* be made most welcome at our first floor haven of succulent treasures; the Mines drinks machine operates twelve hours a day everyday. Run by the RSMU it aims to subsidise nobody merely to rip everyone off with the least amount of effort. Consequently it is growing mould in the spill tray, frequently jams, and slops dregs on your feet when you bang it (or the side panel falls off). People rarely meet there informally because the noise of the asteroid machines is too great.

Visiting academic types soon learn that the non-'scientists' amongst us have more deeply profound issues at hand than the naive enjoyment of cosmetic finery. Yet they come back for more, such is the uniqueness of the Mines Coffee Room atmosphere. So why not join them (and us); come and share a chocolate with a Miner today and put life back into its true perspective.

Mines HJT

Ad Men Speak Out

Dear Martin

We feel deprived and disappointed. On the last FELIX before the holidays we felt you could have made a special effort to include all the Small Ads possible as they are often the most interesting part of the paper. Instead of which we have a typically overlong Simon Rodan article, with everything said twice, and an appeal for the

Accommodation News

Karen Stott, Welfare Advisor, reviews the accommodation available both for this year and for next year.



Your ticket to exam success? Once again the exam season is upon us and students everywhere begin to burn the midnight oil, poring over long forgotten textbooks. It is particularly important this term that your life is as uncomplicated as possible. If you're still struggling with your landlady, you may be interested to know that Imperial College has a limited number of single and shared rooms in student Halls and Houses. All the rooms are within easy walking distance of the College at rents of between £20 and £25 for single rooms and £12 to £22.50 for shared rooms.

Due to unforeseen circumstances, we also find ourselves able to offer a flat for four people for the summer term in Lexham Gardens. This is one of the nicest flats controlled by the College and is a bargain at only £21 per person.

All this highly desirable accommodation is bound to disappear fast so to avoid disappointment call into the Student Services Office *now* or

any weekday between 9:30am and 6:00pm at 15 Princes Gardens.

Accommodation for Next Year?

Over the last few weeks Student Services have received a number of enquiries from students about private rented accommodation for October. At present it is still too early to make many positive steps towards looking for accommodation as most landlords are not prepared to commit their property this far in advance. Student Services do have a few addresses of flats for next year mainly for sharers but unfortunately we won't know about the bulk of available accommodation until September. The new updated accommodation guide should be available from Student Services shortly and this will give you some general hints about accommodation in the private sector. In the meantime it may be worth at least thinking about what sort of accommodation you may be interested in, and perhaps getting a group of friends together, as accommodation for sharers is often easier to find than flats for one or two people. You could also try asking around any final year students you know who may be living in rented accommodation as some landlords are happy to offer accommodation to one group of students on the recommendation of the present tenants if you have any specific difficulties, then call into Student Services and we may be able to help.

money Simon Rodan has just told us we haven't got.

Having only this term started submitting Small Ads, although this year and last they were generally the best part, we felt extremely unhappy.

The Small Ads are the student's voice. Cryptic yes, funny yes, even if you know no one mentioned, they provide light relief to a boring Friday lecture. As a result of your slashes we were reduced to actually making notes.

Yours disgustedly
Kerry Evans, Physics 2
and twelve other Physics students

Small Ads

FOR SALE

●Old record player and speakers needs attention, £2 (it's a give-away at that). Contact Tim Stevenson, 589 3643 ext 22.

●Logic DM101, Heliu tonearm, Goldring 910IGC, Trio KA801 110wpc amp, MS Festival 2s, super-fi sound, £600. Bill Pennington, Chem Eng 1 or 788 8571.

●Special Officer ID Kitdecks, ex-bankrupt stock, was £120, now only £50 through the Audio Society. Also available in the near future Crimson 500 series amplifiers at approx half price, contact Bill Pennington via Union Office or come to one of our meetings.



Michael Arthur surveys the damage.

Flood in Student Services

The Student Services Office was flooded over Easter when a radiator burst. The office, which was empty at the time, was filled with steam and hot water and a

great deal of damage was caused before the supply could be turned off. Until repairs are carried out, the office will operate from another room in the same building, while Student Counsellor Don Adlington has temporarily moved to a room in the Summer Accommodation Centre in Southside.

- **Harlem Globetrotters** at Wembley, Friday May 13, tickets £4.70 and limited number only. Squash Club night out (Mk 2). Apply D V Molesworth 731 6301 or RSMU Office.
- **Squash rackets:** Classic 003 £12ea. Also selection of US-made Manta rackets. Contact Dave 731 6301 or via RSMU Office.
- **Mans 'Carlton' Racer bicycle 27"** wheel, 5-speed, lights, rack and padlock inc, £50 ono. Tim Stevenson 589 3643 ext 22.

WANTED

- **Two David Bowie tickets wanted,** any dates. Contact Neil Grimwood, Chem Eng letter-racks.

ACCOMMODATION

- **Male wanted** to share penthouse flat due to my dropping out. Would suit postgrad or sponsored student. Applications to Stephen Brann, Elec Eng 2.

ANNOUNCEMENTS

- **Trad Jazz Band** available for parties, dances, weddings, etc, reasonable rates. Ring Dave Jago, 437 5874.
- **The Greenland Polar Bear** would like to thank the many who contributed so generously to our funds last term. It was of enormous importance to us. Thanks!
- **The Community Action Group AGM** us being held at 5:30pm in the Rag Office. Everyone is welcome.
- **Min & Met Soc RSM Annual Boat Trip,** Thursday May 5, £5.50. Includes full buffet and disco, bar on board, Leaves Westminster Pier, 7:30pm. Returns 7:30pm.
- **A clear-out** is imminent in the trunk room below Linstead Hall. Will owners of property stored there please be warned that items without labels (of recent origin eg less than 2 years may not survive the purge.

PERSONAL

- **The Restaurant** is returning!

- **A good FELIX Editor** always looks before he leaps.
- **Ru, Si, Rich,** Adam, Nick, Olly, Eric, P, Jill, Shaun and Jutta; thanks for a good week!
- **Pussycat** says Join Polyhedrin, the sinister cult of parrot-worship, in Southside Bar on Sundays. Virgins and over-25s especially welcome.
- **The FELIX Editor's health warning:** Parachute straps can seriously damage your health (not to mention your potential energy!).
- **Phonetappers and Hunters Social Club:** Call the Welfare Officer—he's paranoid!
- **LOST:** Large room, many chairs and fittings, part College building, inc tea and coffee facilities. Answers to name of Bot/Zoo.

Renetty

Gentlemen's Hairdressers

Discount for student and staff!
Cut: first visit £3, second visit and after £2.50; Cut and Blow Dry first visit £4.40, second first and after £3.95.
Mon to Fri 9am to 5pm, Sat 9am to 12noon

Renetty, 154A Cromwell Rd, SW7
(Next to British Airways Building)
Appointments not always necessary.

LINSTEAD HALL

Appointment of Sub Warden

One of three residential sub-warden posts in Linstead Hall will become vacant this term. Applications are invited from academic or research staff members, or from postgraduate students. The Hall has 188 residents, and the duties of sub-wardens are to assist in the social and financial arrangements, under the general direction of the Warden. Rent-free accommodation is provided, suitable either for a single person or a couple (without children). The posts are for one year initially, but applicants who can offer a further year or two will be particularly welcome. Please apply in writing, describing any relevant experience to the Warden, Dr M D Carabine, before 15 May 1983.

Cardphone Home

Cardphones have been installed in the Sherfield Building. These telephones, the result of an experiment started several years ago by British Telecom, are

claimed to be more reliable than their coin-operated counterparts. They operate from a plastic card, similar to a creditcard, which can be bought from Post Offices, some stationers and the College Bookshop. There are two sorts of card, costing £2 or £10, and units of 5p are deducted by the telephone as each call is made.

Lauwerys—Reporting Back

Response to the epic hundred-page Lauwerys Residence Report has been swift and equally epic. So far Union President Stephen Goulder has presented a seven page document of the Union's response to Mr Lauwerys's recommendations, whereas an all-day meeting of the Students' Residence Committee in March generated 25 pages of typescript. But the combined forces of the Wardens excelled

even this with a sixteen page document and extensive diagrams, including flow charts with such titles as 'Customer and Administrative Perspectives on Vacation Lettings'. The main conclusion reached in all these reports is that there is no need for a full time Residential Services Manager to be appointed from the ranks of the Grade II administrators in Sherfield, at a salary of about £16,000—a great deal more than most of our academic staff receive.

Meanwhile at Wednesday's SRC meeting, the Welfare Officer walked out after over an hour of procedural wrangling between two Wardens: the Chairman Don Monro, Warden of Weeks, and Paul Jowitt of Falmouth Keogh.

LIFE
DISCO SCIENCE
PARTY
FRIDAY
APRIL 29th
J.C.R. FROM 8:30pm ONLY £1
LSD PROMOTIONS

Marketing GIVES....

*.... come and find out
what it takes!*

Marketing is the mainspring of modern business. It provides the focus for a whole range of functions – Advertising, Product Development, Sales, Finance, Manufacturing. Marketeers get major responsibility fast. For example, a Brand Manager can be running a multi-million pound business three years after leaving University. Not surprisingly, the demands are high, but so are the rewards.

Procter & Gamble are recognised as world leaders in marketing. In the UK the company markets such household names as Ariel, Fairy Liquid, Head & Shoulders, Pampers, Crest, Flash and Camay. We run a 5 day Brand Management Course, which explains why marketing is so central to business, and covers the role of the Brand Manager.

Our next course will run from 19th to 23rd September at our national headquarters in Newcastle upon Tyne. We will be inviting around 20 final year undergraduates to take part. They will participate actively in marketing projects ranging from television advertising and instore promotion to product development and consumer research.

The course is informal but intensive and will provide a real feel for the dynamism and challenge of the wide range of activities which make up a Brand Manager's job. All expenses will be paid.

If you want to learn about Brand Management, you must apply.

Please write to David Thomas or Clare Flynn using an application form available at your Appointments/Careers Office, c/o Brand Promotion Division, Procter & Gamble Limited, P.O. Box 1 EE, Gosforth, Newcastle upon Tyne NE99 1EE. Alternatively just phone them, reversing the charges, on Newcastle (0632) 857141.

The closing date for applications is 18th May, 1983. Interviews with applicants will be held at the University before the end of term.

PROFESSIONALISM · GROWTH · LEADERSHIP



Southside Security

In an Editorial early last term various issues concerning security in Southside were raised. It was pointed out that locking the main doors at 7:00pm achieves little, yet annoys the residents, and may even make access easier for intruders, since many students, mindful of the inconvenience caused, jam the doors open or allow strangers into the building.

The correct way in, of course, is to use the internal telephone system and call your host to the door, but anyone who tries this, having sought out the night porters tucked away inside the so-called 'main entrance' and attracted their attention through the locked glass door, will only be allowed to use the phone grudgingly, if at all, and made to feel most unwelcome for disrupting a relaxing evening in front of the television.

Shortly after the Editorial appeared Jon Barnett, the Union Welfare Officer, and Stephen Goulder, the President, presented College with a paper on security to be discussed at House Committee. This paper contained several sensible and workable ideas to improve the situation, yet despite this (cynics might say because of this) it has received negligible response from College.

Since Jon & Steve's proposals are not particularly well known by the student body, it may be as well to outline some of them here.

At the Selkirk/Keogh entrance to Southside there are two pairs of doors arranged in series.

EDITORIAL

Summertime, and the living is easy...according to Porgy and Bess anyway, but they never had exams to put up with. For the rest of us, long summer evenings and warm weather bring the time of year when a young man's thoughts turn to hard work, and consequently there are far fewer staff keen to devote their every spare minute to working on FELIX.

The moral is that for those of you who don't have exams, or who have exams very early in the term, or who don't want to take exams particularly seriously, if you have ever considered helping on FELIX, now is the time to volunteer. More than ever this term we shall be needing photographers, reviewers, writers, paste-uppers...in fact, however great or small your ability, we can use you. Look in at the FELIX Office at any time, but especially on Thursday evenings when, in return for an hour's unskilled labour collating, I have been known to buy a round of drinks.

For those of you who don't volunteer, help, or contribute in any way this term, don't complain if FELIX gets rather thinner than you're used to.

At present the main lock is on the outer pair of doors. The Union has proposed that these doors should have the main lock moved to the inner doors and a Southside-network telephone fitted in the entrance lobby between the doors where visitors could use it at any time. The messengers' desk at the main entrance should be closed and transferred to the existing (but unused) messengers' desk just inside the Selkirk/Keogh doors. This would enable those doors to be left open until midnight, or whenever the security guards begin their rounds; at other times entrance would be by key only.

The internal doors connecting Selkirk to Tizard should be unlocked at all times.

The Falmouth/Tizard doors into Southside should be permanently on key access, while the so-called main entrance should be locked when the refectory closes at 7:00pm.

The advantages of these proposals are so obvious that one wonders how the current system ever came into existence. Is there any reason for locking the door from Selkirk to Tizard? Why are two security guards employed to protect a securely locked entrance while fifty yards away anyone can get in by following one of the residents?

A change in the system has been necessary for some time now, and the proposals Jon and Stephen have put forward will be welcomed by anyone who has ever faced the frustration of getting into Southside. The question which must now be asked is why has College done so little in response. Will it take another rape before someone takes any notice of the Union's suggestions?

Copy Deadline

Copy deadline is still 5:30pm on Monday, and because there are fewer staff in the summer it will be even more rigid than before. Since this coming Monday is a Bank Holiday, though, the deadline this week will be split: for the Summer Term Calendar (which will be in next week's FELIX) the deadline is 3:30pm today; for all other contributions it is 10:00am on Tuesday.

Parking Permits

If anyone has a Union parking permit which they don't use, would they return it to Andy Grimshaw, please.

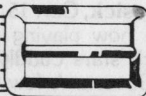
Parties

Because of the disturbance caused during the exam term to students living in Beit, John McCallion has decided not to allow any parties in the Union Building this term.

Impossible Without...

any of the usual bunch. Special thanks to Tim Noyce for sparing us his tasteless cartoons this week.

Martin S Taylor



BELOW

The Belt

WHATEVER YOUR opinions of Oxford University, a circular sent to me by the Oxford University Magazine *ISIS* will do little to improve them.

ISIS, I am told, is planning a survey comparing the sex lives of students at various universities and has asked me for a rough guide to sexual mores at IC (a layman's guide?). From the questions which followed one could well believe that *ISIS* is about to publish a league table on the easiest universities to get laid at; should the editors be reading this, I'm sorry we didn't reply, but put IC at the bottom of the list, theological colleges not excepted.

The questionnaire starts out with a series of detailed questions such as 'How many abstain from sex on religious or moral

grounds?' 'How many virgins arrive/leave?' 'What percentage of boyfriends/girlfriends are there within college?' which assume my knowledge of IC students' sexual habits is as wide-ranging as it is detailed.

The questions then begin to degenerate not only in presumption, but also in accuracy of wording. One rather quaintly asks 'Are there any College sleeping rules?' to which one is tempted to reply that it is left to individuals to decide how much sleep they get. Another puts the bald question 'Number of partners?'

And if you were wondering whether this question was meant to be taken personally, the last question on the list leaves no doubt on this matter, yet still manages to be at the same time impertinently inquisitive, immature, and astonishingly vague as to what they really mean. It asks 'Is your sex life better at Imperial than at home?'

The letter, which is dated April 18, requests a reply April 12. If anyone can get a copy of the results of *ISIS*'s survey, do let me see it.

THOSE OF YOU who listen to Radio 4's *I'm Sorry I Haven't A Clue* will know that this week and next the show is featuring the two editions which were

recorded at IC. Shortly after the recording had finished, the producer, Paul Mayhew-Archer, was rather disturbed to discover the absence of a large metal sign which had been erected just outside the Concert Hall.

Obviously caught unawares by the mascot instinct at IC, Mr Mayhew-Archer proceeded to the bar where he explained his plight to the students there, only to be met with firm denials of guilt, gasps of astonishment and incredulity that such a thing could happen at IC, and (predictably) cries of 'I'm sorry I haven't a clue'.

And who was the guilty party? I can't say for certain; yet very strong rumours around the Union have pointed an accusing finger at the virtuous anti-porn crusader Michael Newman.

Sophistry for Sophie

So here we are once again, back for another College term, and more importantly another issue of that literary lion and bastion of the student's right to know. But what of the film world? What has Hollywood served up in recent weeks to tempt you from your books?

Well, a lot happened in the film world since last term. The much hyped academy awards have been distributed, every one has predicted the rebirth of the British film industry and Hollywood has continued to pump releases at us at a rate of a couple a week. The awards themselves were a bit of a sham; the slight of 'Dahling' Dicky Attenborough trying to mount the stage once again under the increasing weight of golden gongs to tell us what an honour and a privilege it all was, was highly amusing. No doubt Spielberg cried all the way back to his modest little spread and went on a guided tour of his bank balance to cheer himself up.

Meryl Streep deservedly won the award for best actress in the title role of **Sophies Choice**, now playing at the Empire Leicester Square, based on the novel by William Styron.

Stingo (Peter MacNichol) moves into a boarding house in Brooklyn to try and fulfil his ambition of becoming a writer and writing the great American novel. Unfortunately the nocturnal peace of his refuge is disturbed by a

couple upstairs setting to with the sort of gusto that has been known to cause structural damage. Stingo, as Styron's alter ego, eventually meets the energetic pair and is swept into their intense charisma. Nathan is a volatile brilliant Jewish intellectual, supposedly a biophysicist at the nearby university, and Sophie is a Polish Catholic refugee from Europe, a survivor of Auschwitz. The film is Stingo's story of an idealised Brooklyn summer as he narrates the story of his involvement with the enigmatic Sophie and the manic quixotic Nathan (Kevin Kline).

What might have become a comedy about a happy menage-à-trois doing loony things in Brooklyn becomes high melodrama as the film progresses and we realise that theirs is a desperate sort of happiness. Sophie is trying to escape from a past she cannot face which is told in a flashback sequence when she reveals her secret to Stingo. Nathan is not merely tempestuous and emotional, but a paranoid schizophrenic barely able to keep control and totally reliant on Sophie. This central relationship is one of the best double acts on the screen for many years. Both accomplished performers, Streep and Kline really strike sparks off each other. Streep is at her superlative best and having demonstrated she can master a Devonshire burr in *French Lieutenant*, she now adopts a mid-European accent of equal persuasion. This is a part which Ms Streep initially rejected and then having read the script, begged to be given after



Elizabeth McGovern—a professional problem for Dr Benjamin.

it had already been cast (the couch is this way my dear...) and she certainly gives it everything she's got. A somewhat typecast part for her, having had experience of concentration camp tragedy in *Holocaust*, but she's easily the best dramatic actress on the screen. Perhaps she might try some lighter roles next.

Speaking of which brings us nicely to **Lovesick**, Cert 15, directed by Marshall Brickman now playing at the Warner West End, which stars cuddly Dudley and Elizabeth McGovern. A few weeks ago I predicted that Management Consultants would be the focal profession in Hollywood; unfortunately my hopes have been dashed as yet another film takes a humorous sideswipe at that oldest of Hollywood foils, the shrink. The profession of psychoanalysis has a love-hate relationship with Hollywood; directors and performers keep the Hollywood shrinks in business: but they cannot resist the occasion attempt to expose the whole profession as a bunch of greedy charlatans. Dudley Moore plays Dr Saul Benjamin who 'inherits' Chlöe Allen (Miss McGovern) when her regular psychiatrist dies suddenly. He immediately becomes obsessed with her (who can blame him?) and she likewise. He fights against his twin burdens of marital guilt and his professional ethics, personified by the mystical appearance of Dr Sigmund Freud (Sir Alec Guinness).

Obvious comparisons will be made between this film and the recently televised *10*. There is the same rich easy lifestyle suddenly disrupted by a frantic pursuit of a woman, which threatens to ruin his career. But whereas *10* was a sex comedy, albeit of a rather unsensational nature, this is a romantic comedy and the casting emphasises it. Instead of the sensual Bo Derek we have the impish and vulnerable Elizabeth McGovern. But

while Ms Derek's cold sexuality left me rather unmoved. Ms McGovern was a revelation to a hopeless romantic like myself. The heart fluttered, the mouth dried and the legs turned to jelly; she is a vision, the sort of girl you could take home to mummy with no trepidation (form a queue behind me please). Dudley Moore's performance is as good as we've come to expect. He must have one of the longest and most varied comic pedigrees around, from *Derek and Clive* to *Jackanory*. This performance is a nice mixture of the absurd, slapstick and pathos. In my opinion this film is superior to its notorious predecessor.

Also passed over at the Ghandi award ceremonies, **Tootsie**, cert PG, directed by Sydney Pollack now playing at the Odeon Leicester Square, starring Dustin Hoffman is superficially a comedy but actually works on several different levels. It is the story of a 'serious' but unemployed actor, Michael Dorsey, who needs to raise some money to produce a friend's play. Unable to get work because of his reputation as a difficult actor, he decides to audition for a female part in a long running TV hospital soap. Working with a bunch of no-talent has-beens, playing a stereotyped part and facing the studio's obsession with ratings, he learns to be less of a bull at a gate. He doesn't argue with the director, he just does the part his way and shows that it works. Unfortunately this is disconcerting to the other actors who are slaves to the autocue and are disconcerted by this ad-lib approach. This success on the screen leads to great problems in his personal life. He has to lead a double life as Michael Dorsey the unemployed serious actor and Dorothy Michaels the rising soap star. He falls in love with fellow soap star Julie (Jessica

Lange) but can't reveal his true identity (or even sex).

Julia thinks s/he's a lesbian, his old girlfriend Sandy think he's being unfaithful, his flatmate thinks he's gay, Julia's father wants to marry him and his agent is understandably worried.

So thus far we have a fairly predictable sitcom. Where this film scores is the undertone of feminism. Forced to view the world from a woman's point of view, he fights against chauvinism and men's patronising attitude through the medium of Dorothy. The strength and clarity of her message not only produces a huge fan following but also changes the attitude of the other female actors in the 'soap'. Julia decides to chuck Ron who has been 'fooling around' with her, inspired by the inner strength Dorothy has given her.

Dustin Hoffman turns in a highly creditable performance both as the dedicated actor and the larger than life Dorothy. It is a great credit to his ability that he is a highly believable woman and he puts across the woman's point of view with strength and conviction. Jessica Lange picked up the gong for best supporting actress as Julie, and it has to be said it was a good performance, although not outstanding. Her characters are always vague, detached, mixed up people, merely as though she's playing herself.

I suppose you can't have a serious comedy, but you can use it as a; medium and have a good laugh, rather reminiscent of the approach taken in the hit stage show *Accidental Death of an Anarchist*. I reckon this film will be as big here as it was in the States.

Supporting **Tootsie** at most venues is the interesting short **A Shocking Accident**, cert PG, directed by James Scott. It is based on a short story by Graham Greene and is a little gem of a piece. Could this be the rebirth of the well-made support film? The death of the tawdry travelog or day in the life of some overpaid French chef could be nigh.

Still knocking around the old metrop with a few weeks running under its belt is the Royal Film Performance **Table For Five** playing at various venues. This superior tear jerker features the polished John Voight as a divorced father trying to make a comeback



Dustin Hoffman wins a glamorous granny award.

into the life of his family. The 'vehicle' he chooses for this is a cruise round the Med. So this developing relationship is mixed in with his blundering attempts at ocean-going romance and travelog scenes of the pyramids, the Sphinx and Acropolis. All jolly scenic and nice, everyone is too good to be true and a tragic if somewhat predictable twist forces choices to be made. Good acting all round, but generally a bit banal. Aimed at a whole new market of divorced fathers, this could be the first of a whole new man-sized Kleenex genre.

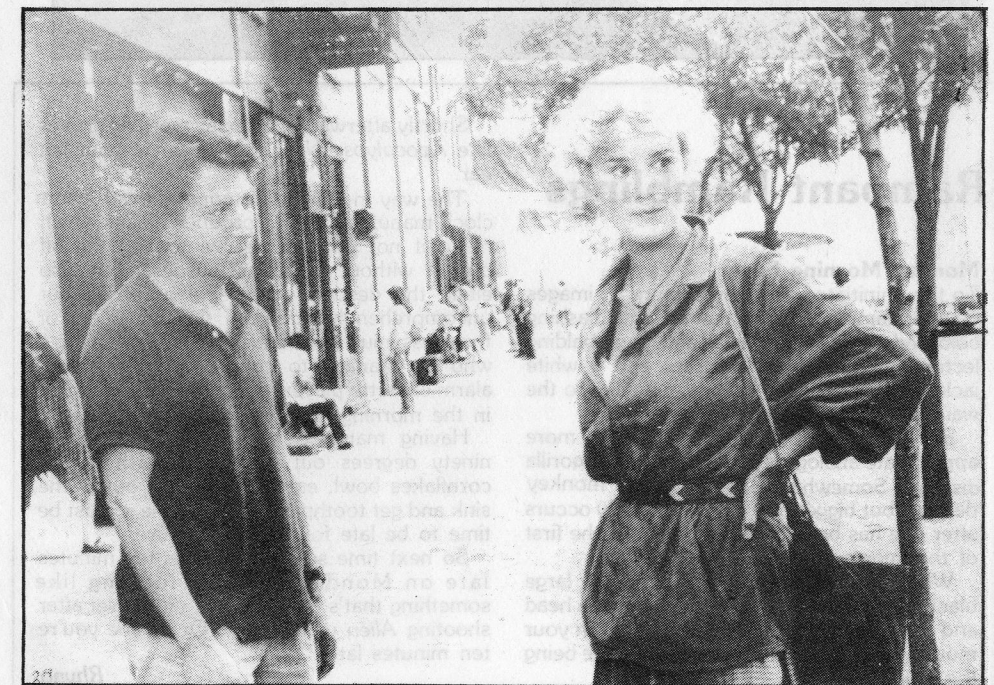
Michael Winner, never one to let subtlety bother him, gathers together a highly talented cast which he then proceeds to waste on silly, but possibly highly commercial, rubbish. **Wicked Lady**, cert 18, playing at the Leicester Square Theatre is I suppose what they call escapist drama.

Lots of what we've come to expect from Mr Winner as Denholm Elliott, Prunella Scales, Faye Dunaway, Alan Bates and John Gielgud mess around with leather whips and silmarilly goings on. What people of this talent are doing in a film this bad (apart from picking up large pay cheques) I don't know.

Lee Paddon



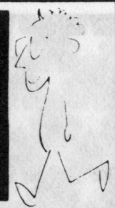
Meryl Streep and Kevin Kline play the doomed lovers in Sophie's Choice.



Dorsey reveals all but Julie has found an interesting tree to look at.

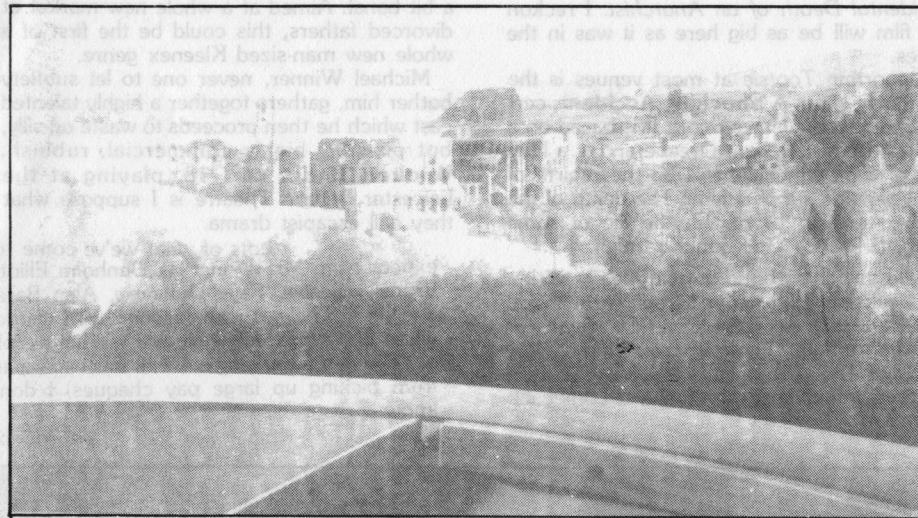
WALKABOUT- LOOKSEE

by Mobile Optics Inc.



In 1836, a committee of the House of Commons was set up to investigate the promotion of art in Britain. They reported that the arts received little encouragement in this country (...so what's new?) and made two major recommendations to improve the situation. Firstly, schools of design should be established: the School of Design, later the Royal College of Art, opened the next year. Secondly, museums should be set up throughout the country with collections including, as well as ancient art, 'the most approved specimens, foreign as well as domestic, which our extensive commerce would readily convey to us from the most distant quarters of the globe.'

In 1852, Henry Cole set up the Museum of Ornamental Art: his original collection consisted of examples of decorative art unearthed from the cellars of the RCA and £5,000 worth of purchases from the Great Exhibition of 1851. This was the embryonic Victoria and Albert Museum.



Rampant Ramblings

Monday Morning Fever

To the uninitiated this may conjure up images of your familiar lecture theatre with flashing coloured lights in the floor and your balding lecturer in gold lamé trousers and a white jacket, doing his best to avoid a stroke to the wall of the Bee Gees.

But the rest of us know better. A more appropriate analogy is perhaps big black gorilla disease. Somewhat akin to green monkey disease, but bigger and uglier; it usually occurs after one has been carousing till after the first of the 'morrow, as the saying has it.

When you're safely tucked in bed, a large black ape comes in, beats you about the head and puts all manner of foul substances in your mouth, and then departs without anyone being the wiser.

Conversion from Science to Art

Right at the end of last term the first expansion of the V&A since 1909, the Henry Cole wing, opened on Exhibition Road.

The new wing is Imperial College's Old Huxley Building which once housed, amongst other old curiosities, the Department of Meteorology, which was swallowed up into the physics department during the move to the New Huxley Building on Queen's Gate.

The new wing contains the Department of Prints, Drawings and Photographs, and Paintings. It has a specialist bookshop on level one and a machine dispensing peculiarly nasty coffee on level six. The galleries are spread over the intervening floors and linked by the dramatic Great North Staircase.

The finest gallery, on level six, is that of the Constable Collection. Constable's buxom clouds float above a soft-pile carpet and the view from the windows is across the rooftops of South Kensington, towards Constable-style clouds over Croydon.

On level four, the 1824 Panorama of Rome by Caracciolo is on display for the first time. It is 44ft long and displayed, as far as possible, as it would have been at the time, with steps leading up to a circular viewing platform: if you look very carefully you'll find the join!

Temporary Exhibition Hall

On level two, in the high ceilinged Henry Cole Gallery, is the exhibition 'Pattern and Design 1480-1980'. The groups of exhibits show how patterns and drawings act as inspiration or as primary patterns in the creation of



ornamental 3D objects, be they candlesticks, tables or silk petticoats.

In one group the focal point is William Morris's 1874 'Willow' design for wallpaper. One of his sources may well have been the plant imagery of John Gerard's 17th century 'Herball', which is displayed open at the illustration of 'The Ozier or Water Willow'. The intricate willow design itself became source material for a printed cotton produced by Morris & Co twenty years later. Recently a wallpaper, produced by Osborne & Little Ltd for Liberty & Co in 1975, was adapted from the printed cotton fabric. The delicacy of the foliage is preserved from design to design, but the spontaneous naturalism of the original has developed, through successive mutations, into a stylized intertwining of leafy shapes.

The catalogue for this exhibition deserves the bookshelf rather than the coffee table. Its illustrations, both B&W and colour, provide an attractive (as well as informative) record of the links between designs and finished artifacts. And for the enthusiast, or specialist, there's an index to the huge collection of designers' drawings in the V&A.

Where? When? £?

'Pattern and Design: Design for the decorative arts 1480-1980' is the main exhibition area of the Henry Cole Gallery. It's on until July 3 and is free. The exhibition and the new wing are open, like the rest of the V&A, weekdays and Saturday 10:00-17:50, Sunday 14:30-17:50, closed Fridays.

Rhyno

Examinations, Anxiety And Commonsense

by Don Adlington:

Student Counsellor

Written, formal examinations have a hallowed place in academic life, and while, from time to time, educationalists have espoused alternative methods, they are widely accepted as the fairest and most efficient means of assessing students' knowledge and understanding.

The written examination is not however by any means a precise instrument. It is certainly possible, for example, on individual papers, to come up with a 'fluke' result, that is a result markedly better than the student's actual ability would have led one to expect. It is also unquestionably possible to come up with results that are worse than either the student or his teachers anticipated, and which do not fairly reflect the student's ability.

The risk of systematically underperforming in a set of examinations is linked to two separate, but closely related, factors: (a) an inadequate technique for playing the examination game, and (b) an inadequate recognition that a formal examination, like any other testing situation, can generate levels of anxiety which in themselves may have an adverse effect on intellectual functioning.

Playing the examination game

Examinations are to some extent an abstraction from reality, an artificial construct. They are a sort of game in which the participants are invited to demonstrate what they know, in writing, on a blank piece of paper, in a set time. An important component of the game is that the examiners is forbidden to give credit on any other evidence than that presented in the script. It is astonishing fact that despite this elementary point, some students insist on abandoning common sense to the extent, apparently of playing

another game altogether. A common manifestation of this is the student who spends an hour and three quarters (out of three hours) writing, re-writing, polishing and perfecting one answer out of four or five required.

Another common departure from the rules consists in writing out the answers without properly reading the questions. There are two, equally devastating variants to this: (a) not selecting the questions which optimise the candidate's chances of scoring high over-all, and (b) misreading individual questions and subsequently writing an answer to a question which in effect is not there.



Some basic and well recognised components of a good examination technique are as follows:

1. Read the question paper carefully, preferably twice. Errors of perception are highly correlated with heightened anxiety.

2. Select the questions you are going to answer, put them in order, and write out a simple timetable, allowing the same time to all questions (assuming the same maximum marks for each). Allow fifteen minutes for the planning and five minutes at

the end for finishing off. Some people find that it helps to make quick notes on each question at this stage.

3. Be disciplined in adhering to the timetable. Recognise that the first few marks accruing to a question can be obtained far more easily than the last few—and it is the total mark which counts. If you get stuck in the middle of a question leave it and deal with the next one. You can always return to the unfinished answer later, and indeed the very act of disengaging from the difficulty may allow a resolution to surface while your mind is actually focussed on something else.

4. Answer the easiest question first, so that you can proceed to the others on a psychological 'high'.

5. Don't be afraid to make rough notes in your answer book. When you are answering one question, ideas relating to other questions you are going to answer may come into your head—jot them down. Similarly on entering the examination room, and possibly before reading the paper at all, you may wish to write down very quickly salient points which you have memorised in your final preparation.

It is, of course, essential to rule out rough work very clearly, so that the examiners knows that

natural, and that you can handle it. In doing that, you minimise the risk that the anxiety may escalate to a point where it becomes disabling. Again there seem to be some common sense ways of handling this problem.

Arrive early—far better be biting your nails outside the examination room, than sitting in a traffic jam at Earl's Court. Once you are in the examination room, sit down and relax a minute or two before doing anything.

To a certain extent anxiety is contagious. If you feel that this is a hazard for you, then 'keep yourself to yourself' before admission to the examination room. It may also be worthwhile resisting the impulse to compare notes with all your friends immediately after an exam.

It is also a good idea in the examination itself, not to let yourself be thrown if your neighbours appear to be writing with more facility than you are. They may, for all you know, be writing rubbish, and in any case, inordinately long answers do not necessarily bring the best results.

The most common symptoms of anxiety getting out of hand, is an overwhelming sense of panic, a temporary breakdown of our rational and ordered response to a demanding situation. In an examination this may, for example, take the form of 'blanking out'—completely forgetting everything. The remedy for this is to switch off, close your eyes, and do nothing for a while.

This is far better than yielding too easily to the powerful impulse to resolve the tension by giving up altogether. When you feel that the anxiety attack has abated, try getting your mind working again by using a 'scribble technique'. Just write down words—any words—which lead to other words, until you feel that your faculty of recall is available to you again.

A final point. If you have a history of becoming particularly anxious at exam times, or if for contingent reasons you think that you may do so this time, it would be sensible to talk to someone about it well beforehand. Tell your personal tutor or your senior tutor, talk to a doctor or nurse at the Health Centre, or come to see me. Just a small amount of practical help may make a substantial difference in the event.

Some material in this article is derived from a lecture given by Dr Robert Sharp of the Institute of Behavioural Therapy.

it does not form part of your answer.

6. If you run out of time, tell the examiner so, and say which points you would have gone on to discuss if you had more time.

Dealing with anxiety

A degree of anxiety, accompanied by recognised physiological symptoms, is a normal reaction to testing and stressful situations. Everyone is affected to some extent and should be aware of it. You tell yourself that you are anxious, that it is

STOIC

Di dum di diddle di dum di dum di dum di dum di dum di die...And now for something completely different. On Tuesday Michael Palin will be interviewing Dave Owen (the STOIC Chairman, not the SDP founder member—what do you expect, celebrities?). And now for something completely indifferent: On Thursday we're Breaking the News as usual. We are also looking for a new name for the teletext service, STOICFAX; so far *Listing of All Weekly Reports, Education News and Coming Events* (LAWRENCE) and *Programmed Electronic News and Information Service* (the chairman had second thoughts about this one) have both been rejected. In the meantime (and the Summer Time as well), keep watching—it may happen.

IC CND

Welcome back to College, and I hope you had a peaceful Easter. The Easter demonstrations were of course a big success. There will not be much happening with us for the first two weeks of term because I've got exams, but here are some future dates to remember: Tuesday May 10 a speaker from Civil Engineers for Nuclear Disarmament; Thursday lunchtime May 19 IC CND AGM (keep this date free); sometime soon a speaker from Tories Against Cruise and Trident. The results of the Peace Canvass will be coming out soon.

Robert Kelsey
Civ Eng 3

ΨΦ Soc

Another term, another planet.

With the islands behind me now there is only the empty future to pull me through the debris of the days. I'm waiting for seri, but I have *that* feeling, the one when you spill boiling water over your left foot, but she isn't going to show her face anymore. I'll wait around the tube anyway. You new know. Someone came round yesterday, but I was out. Said he was from Rent-o-kill, but I noticed he was carrying a gun like *The Professionals*. A girl was run over later that day, and somehow I feel the net pulling closer around me. John said that *Shock Treatment* is on next Tuesday, the *Rocky Horror* follow-up. I believed him.

Peter S

RCS

Election papers for Ents Chairman, Publicity Officer, Assistant Hon Sec, Bookshop Rep, RCSA Reps, Exploration Board Rep and Theta Bearers(!) are up at the moment. Anyone interested in standing for any of these posts should see either the retiring officer or myself as soon as possible. The elections will be held at the AGM on May 10 which is followed by Exec initiation and a quick trip to the Round Pond.

Other events include the Brighton Run on Sunday and in a week's time the incomparable Silwood Ball. The last event of the year will be the annual RCSU v RCSA Cricket Match at Harlington—more details next week. See you around.

Chas Fuller

Vacation Work on Micros

Civil Engineer final year students or postgraduates required during summer vacation to work on the development and documentation of a structural analysis micro package. Good pay and experience. Only the best should apply. Ring Computer Design 01-609 1878 for application forms or write with brief cv to Computer Design, 41 North Road, Islington, London N7 9DP.

£15 A Day Tax Free

Once again the Duke of Edinburgh Award Scheme need help with routine clerical work for two days on Friday May 5 and Tuesday June 21 in their South Kensington Office. They will pay £15 for an 8 hour day. Anyone interested please contact Student Services as soon as possible.



The CROMWELLIAN

Entrance on
3 Cromwell Road SW7
Tel: 584 7258

Opposite Natural History Museum, 2 mins from South Kensington Tube

COCKTAIL AND WINE BAR

Open

Monday-Friday: 6:00-11:00

Saturday: 8:00-11:00

INTRODUCING HAPPY HOURS

6:00-9:00pm

Cocktails at £1.50 & Drinks 80p

STUDENTS NIGHT MONDAY
COCKTAILS £1.50 ALL NIGHT
6:00-11:00pm

SIT ON IT

You don't need us to tell you how much sense a cycle makes. But you do need us to help you choose your next bike. We'll service it, guarantee it, and should anything go wrong, repair it beautifully. And we also offer a 10% discount. So even though you'll be getting around town faster, your grant will go slower.



MEND-A-BIKE

13-15 Park Walk,
London SW10, 01-352 3999
FULHAM CYCLE STORE
917-921 Fulham Road,
London SW6, 01-736 8655

10% STUDENT DISCOUNT



Hockey



IC Mens Hockey
Folkestone Easter Hockey
Festival 1983
General Report
Folkestone, Easter 1983 was
unfortunately
cancelled, leaving
knackered players lying
in bars at all hours of the
night and day
grunting (especially Charles).
While others manage
a number of games
somehow we only got
to play one which
ended 1-1.
Organisation (and Charlies
Charm)

failed miserably.
Trying to keep Chris awake was
indeed a problem.
Maybe he had some sense—
extremely unlikely.
Team
Goal C Jones
Defence A Stroomer, A Stewart,
A Whitehead, C Eldridge, T
Atkins
Midfield M Realf, B Franklin,
T Coatesworth
Forwards M Bansal, G Ayers
(Capt), P Dubenski
Acknowledgements
Jim, Daphne and others at the
Southcliffe Hotel and Nevill
Mirov for trying so hard.

Cycling



Redman CC 25 mile team trial
on the Portsmouth road near
Guildford 27-3-83.

Appalling weather greeted the
Club's first race on fast rolling
course this year. Hotchkiss was
off at 8:00am, Williams at 8:08
and McDonald 8-22, they
looked soaked through before
they even crossed the start.

Hotchkiss was the first
indication that things were going
well, as he finished having
overtaken six riders starting at
minute intervals before him.
This gave him eventual eighth
place from a field of 120.

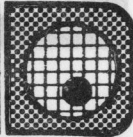
Next back, more than a
minute before expect was Willi-
ams, who rode a stormer to take
overall sixth position and fastest
novice despite going off course.

Finally McDonald arrived,
forty seconds after his minute

man, after battling all the way
round to catch him and nearly
succeeding halfway.

This gave the Imperial team
fastest composite time and the
second trophy of the day.

Squash



IC1	vs	Guys1	2 1/2-2 1/2
IC2	vs	UCH1	0-6
IC3	vs	StMH2	2-3
IC4	vs	ICRF1	0-5
IC4	vs	KCH2	1-4
IC5	vs	QMC3	0-5
IC5	vs	StMH3	1-4
Ladies	vs	Guys2	3-3
Ladies	vs	QEC	0-6
Ladies	vs	LonH	5-1

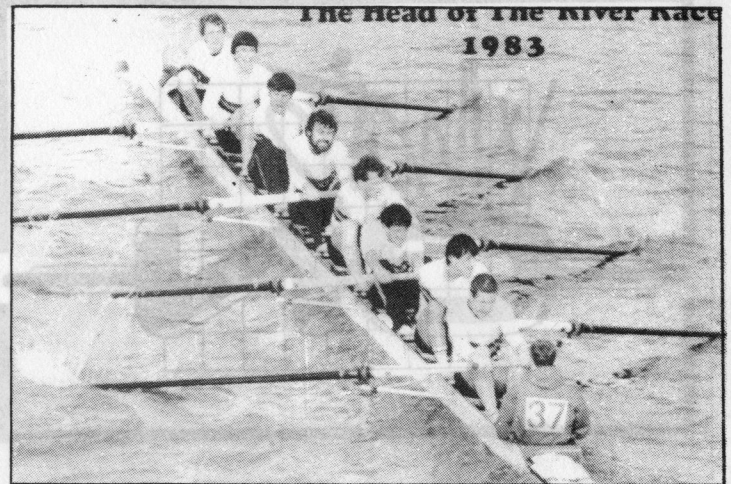
Now you can see why they
were previously unreported! The
Ladies finished 7th in Div 2.

At the end of last term the
Annual Dinner at the Cumber-
land Hotel was well attended,
highly entertaining and proved
excellent value with help from
ICX. Two awards were made:
the first to Laecque Danesh-
mend as 1st team No 1, and the
second, the Neil Crozier Mem-
orial Trophy, to Ian Crindall as
the most successful team player.

The week-long tour to Pader-
born during the Vac was a great
success thanks to the large
amount of competitive squash
played, Marianne Hascher, the
British Army, mixed saunas and
German hospitality. Our hosts
were rewarded by having a
considerable number of their
rather attractive beer glasses
swiped, and by the offer of a
return tour to our slightlv more
meagre facilities. On a slightly
sadder note I'm sorry to have to
report that the tour finances will
not stretch far enough to cover
the damage inflicted on the new
ICU minibus by Laecque during
his test.

Having dismally failed to flog
copious quantities of quality
Squash Club T-shirts to the
already overdressed Germans, I
am now in a position to deflate
the price again and offer them to
the open market at cost plus my
percentage. The artwork is
displayed on the noticeboard, as
are ordering details.

Coming up in a few Fridays'
time on May 13 is a trip to see
the Harlem Globe Trotters at
Wembley. Tickets are £4.70 and
there are (were) fourteen going.
Contact Dave on 731 6301 late
eve or via the RSMU Office.



Boat



The Boat Club gave their best
performance of the year so far in
the Head of the River Race on
March 26. The race was held on
the river Thames from Mortlake
to Putney over 4 1/2 miles. It is
the largest event in Western
Europe and all the top club,
college and university crews
enter together with national
squad-based crews and several
foreign clubs.

The 1st VIII came tenth
overall out of 420 entries, taking
18min 10s. This is the best
performance of an IC crew for
twenty-five years. Of the crews
which beat them, five were
British national squad crews and
one the Italian national eight.
The only other university crew in
the top ten was from ULBC. Isis,
the Oxford second boat, came
12th, 10s behind IC.

The second and third eights
came 58th and 61st respectively,
both beating the fastest other
college crew. The novice eight
came a creditable 234th.

Following the extra long

Easter break of four days,
generously given by coach Bill
Mason, the senior squad re-
turned to racing at the smaller
scale Bedford Head. Over the
shorter 2,000m course, Imperial
College took three out of the
first four places in the fours
event, winning senior A and
senior B fours. They also picked
up the trophies for senior A
coxless pairs and novice sculls.

This was the final head race of
the winter and so the squad had
to return to intense training to
prepare for the side by side
racing of regattas. The first of
these was held at Hammersmith
over one mile last Saturday. The
college boat club dominated the
regatta winning four of the
premier events. Highlight of the
day was the senior A eights final
between ICBC, Thames Trade-
men RC and Quintin BC. Despite
a fast start by TTRC, the 1st VIII
soon hit their rhythm and pulled
away to win by two lengths. The
Senior A coxless four won with
ease as did the Senior B coxed
four and the elite coxless pair.
The next regatta for the senior
squad is at Ghent in Belgium on
May 6/7 where the opposition will
be a great deal faster.

ICU Athletics Clubs Committee

present

SPORTS DAY

to be held on Saturday 7 May
at Motspur Park (free travel from Beit)

Entry forms available from the
Union Office — over 27 events

ALL WELCOME!



-I would like to apologise in advance for the inevitable omissions and inclusions of meetings which no longer take place. Please inform me of any changes or just reassure me if you don't want your entry changed!

Diane

Today

1230h JCR
Angling Club meeting near Alan's Bar.

1230h JCR
Liberal Club bookstall. Membership of Union of Liberal Students, Young Liberals and Liberal Party available.

Lunch JCR
ICNAC (BUNAC) weekly meeting. Look for the stars and stripes.

1255h Union Concert Hall
Islamic Society Friday prayers

1830h Music Room, 53 Princes Gate
Christian Union meeting All welcome; coffee at 1800h.

2030h JCR
Life Sci Party Disco and Bar till 12:00pm, all for £1.

2230h Falmouth Kitchens
Soup Run

Saturday

Cancelled due to lack of interest.

Sunday

0915h Sheffield Building, look for sign on Consort Gallery door.

WLC Prayer meeting

0930h Beit Arch
Cycle Ride

1000h Consort Gallery, Sherf.
WLC Communion Service.
Coffee afterwards.

1100h More House
Catholic Mass

1300h Union SCR
Wargames Club meeting

Monday

1230h Rag Comm Office
Community Action Group meeting

1930h JCR
Advanced Dancing Class

1930h Elec Eng 408
Wellsoc Free to members.

Tuesday

1230h Southside Upper Lounge
Boardsailing Club meeting

1230h Elec Eng 606
Pimlico Connection Soc
weekly lunch

1230h Chem 231
Catholic Mass and lunch

1245h Southside Upper Lounge
Cycling Club lunchtime meeting

1300h TV Lounges
STOIC

1300h Huxley 340
UN Soc 'Drug Companies and the Third World', a talk by a representative of the World Development Organisation.

1300h Upper Union Lounge
Audio Soc record club. All currently available albums at fantastic prices.

1730h Volleyball Court
IC Volleyball club ladies training evening.

1730h Rag Office
Community Action Group AGM
Free, all welcome.

1730h Brown Committee Room
Amnesty International meeting

1800h TV Lounges
STOIC

1800h Southside Upper Lounge
Boardsailing Club meeting

1830h JCR
Silver Medal dancing class



A still from the follow-up to the 'Rocky Horror' movie.

1830h

Mech Eng
220

Science Fiction Society Film and AGM. The follow-up to 'The Rocky Horror Show' and just as bad. Grit your teeth and cross your legs in that order. All right, stop now and smile. Happy birthday. Admission undefined, but will be negligible.

-I'm going to cross my teeth and grit my legs and if I smile at all it will be accompanied by a sad shake of the head during the President's antics (without which the show is never complete).

1830h

Union
Gym

Judo Practice Admission 25p

1830h

Union Upper
Lounge

Audio Soc Demonstration The Questar QA3 is the cheapest interactive loudspeaker system on the market. At just under £400, with over 200W of built in amplification, they are excellent value. Combine this with an incredible sound quality, they may seem too good to be true, but this is in no small way due to the active approach, ie the system used in professional PA systems where each drive unit has its own amplifier. The QA3s have one amp for the treble and two bridged amps for the mid/bass unit. Come and hear for yourself, together with big brothers the QA2s (with 400W of built-in power) and Questar's new pre-amp in its first public showing.

1830h

661
Selkirk

VEGSOC meal in my room—661 Selkirk Hall. Wander along after 6:30 and bring some food—anything not composed of dead animals will do! All welcome.

-It may look as if I am so desperate for items to fill this column that I am actually holding events myself to fill the gaps. Think what you like!

1930h

JCR

Intermediate Dancing Class Monday's class is combining with the Tuesday Intermediate class to form this new class.

2230h Falmouth Kitchens
Soup Run

Wednesday

1300h

Huxley
341

Senior Christian Fellowship,
The Gospel of John: Study 1.

1300h Union SCR
Wargames Club meeting

1315h 9 Princes Gdns
Islamic Society Quran Circle

1345h

Beit
Arch

Cycling Club training ride.

AFTERNOON

RSM
401

Microcomputer Club meeting

1400h Dramsoc Storeroom
Workshop

1830h JCR
Bronze Medal Dancing Class

1930h

JCR

Beginners' dancing class continued from last term.

Thursday

1230h

Southside
Upper Lounge

UN Soc AGM

1300h

Union
Upper Lounge

Socialist Society has a talk by a speaker from 'Militant'.

1300h Green Committee Room
SF Soc Library & Committee meeting

1300h TV Lounges
STOIC

1730h Aero 254
Gliding Club meeting

1800h TV Lounges
STOIC

1830h

Mech Eng
220

IC Ents present *Gregory's Girl* Admission 50p.

1930h

Westminster

Annual Boat Trip by Min & Met Sci. For £5.50 there is a full buffet, disco and bar. Starts at Westminster Bridge Pier and finishes there at 11:30pm.



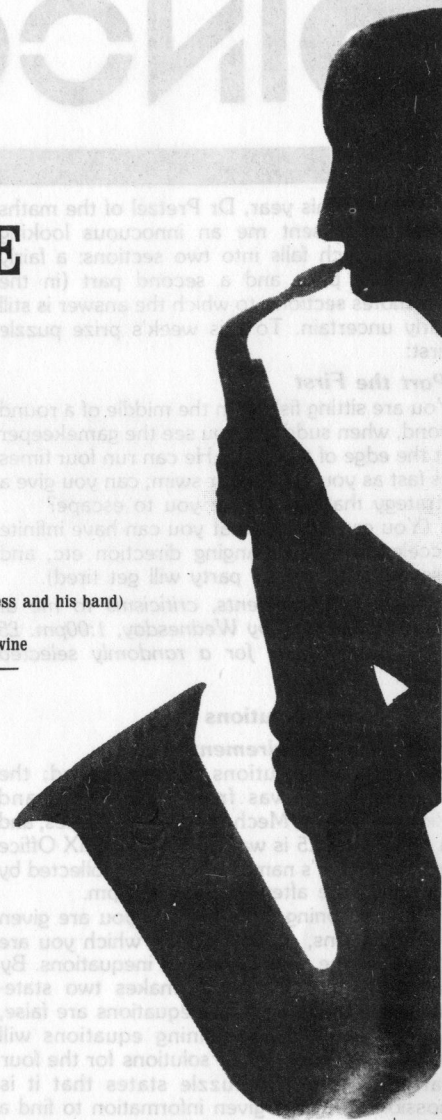
COLLEGE DINNER

Wednesday
11 May 1983
Main Dining Hall
Sherfield Building

Dispel your
mid-term blues
at 7 pm with dinner
and jazz at 9 pm (Clive Peerless and his band)

Cost: Staff £7.00 Inclusive of wine
Students £6.00
(subsidy already deducted)

Tickets available from
Students Union and
508 Sherfield Building



Coming Soon

FRIDAY
6 MAY

1900h

RCM
Concert Hall

Student Association Concert
Ravel: Tombeau de Couperin,
Mozart: Flute and Harp Con-
certo and Beethoven: Sym-
phony no 7 all for free!

FRIDAY
13 MAY
EVENING

Wembley
Squash Club Night Out to see
Harlem Globetrotters. Tickets
£4.70 in advance available from
D V Molesworth. Limited num-
bers only but non-members
may apply if club members do
not fill places. Contact Mr
D V Molesworth on 731 6301
late evening or int 3880 or 589
5111 ext 1566 or at RSMU
Office.

PINOCCCHIO

In January this year, Dr Pretzel of the maths department sent me an innocuous looking puzzle which falls into two sections: a fairly easy first part, and a second part (in the Footnotes section), to which the answer is still fairly uncertain. To this week's prize puzzle first:

Part the First

You are sitting fishing in the middle of a round pond, when suddenly you see the gamekeeper at the edge of the pond. He can run four times as fast as you can row or swim; can you give a strategy that will enable you to escape?

(You can assume that you can have infinite acceleration for changing direction etc, and assume that neither party will get tired).

Solutions, comments, criticisms to me at the FELIX Office by Wednesday, 1:00pm. £5 from Mend-a-Bike for a randomly selected entry.

Last Term's Solutions

Rehearsal Requirement

Two correct solutions were received; the winning entry was from Paul Fisher and Richard Glover, Mech Eng postgraduates, and a cheque for £5 is waiting in the FELIX Office in Paul Fisher's name, and can be collected by him any time after Tuesday 1:30pm.

The reasoning is as follows: you are given five equations, at least one of which you are told is untrue, and a series of inequations. By assuming that the tenor makes two statements, ie that two of the equations are false, any three of the remaining equations will supply an infinite set of solutions for the four variables. But the puzzle states that it is possible from the given information to find a solution; hence you need four equations to solve four unknowns, irrespective of the inequalities given. Thus the Tenor only makes one statement.

The only solution then is that the statement four is the lie and that the alto has made the

fifth statement. This gives the solution Sopranos 15, Basses 13, Altos 12, Tenors 5, which satisfies the inequation.

It's an Ill Wind

Under the quite reasonable assumption that there is a one-to-one mapping of keys, then the unique solution is that the keys are relabelled:

Key	Relabelled
1	2
2	1
3	4
4	3
5	6
6	5
7	+
8	0
9	7
0	8
+	1
-	÷
x	x
÷	9
	8

I shall admit that I don't know if the solution is unique if bijection is not assumed, but thanks Perola for a fascinating puzzle.

Judith Glading of Civ Eng 1 was selected as the winner and can collect her £5 from the FELIX Office after 1:30pm on Tuesday.

Dots'n'Boxes

Congratulations to C N Goh, an Elec Eng PG, who was randomly selected from the five correct entries and can collect his £5 cheque as per above.

The solution is found thus:

There are 400 dots, 324 in the middle, 72 on the edge, 4 at corners, and 760 segments.

Given that there are 219 red dots, there are therefore 181 green dots.

Number of segments attached to red dots is $(180 \times 4) + (39 \times 3) + (0 \times 2) = 837$

And for green:

$$(144 \times 4) + (33 \times 3) + (4 \times 2) = 683$$

The 237 black segments are attached to red and green. Therefore of the 837 segments attached to red dots, 237 are black. Therefore 600 are red, and similarly, of the 683 segments attached to green dots, 446 are green.

Each green segment is shared between two green dots.

Therefore there are 223 green segments.

Thanks to John Flanagan (Chem PG) for the above proof.

Baby, it's code outside

Had you counted the number of letters, you would no doubt have noticed that there were 225—a square number, which should have given away that the letters were to be arranged in a 15x15 square to give:

Inviting and inciting me to rise.

And through the window in the wall

Come streaming in on sunlight wings

A million bright ambassadors of morning.

And no-one sings me lullabies,

And no-one makes me close my eyes,

So I throw the windows wide.

And call to you across the sky.

Pink Floyd

which comes from 'Echoes' from the LP 'Meddle', by Pink Floyd.

Fruit Shop

Well, I don't know how many of you looked at this one, but a simple solution is for the men to sell their oranges at 1p a dozen, and 3p for single oranges.



Footnotes...

Part the Second

Quite simply, what is your optimum strategy (the one which puts the maximum distance between yourself and the gamekeeper when you reach the edge), and what is the greatest ratio of speed of gamekeeper to your own speed before you cannot escape?

There are two uncollected prizes of £5 awaiting collection in the FELIX Office by Robert Macrae of Elec Eng 1 and James Aldridge of Physics 2.



Gastropod goes on holiday

Gastropod's Easter jaunt comprised a boat trip up the Thames from Hampton Court to Oxford. This is a recipe for a superbly inexpensive holiday costing as little as £35 each for a week. Boats are available with two to nine berths although for comfort it is best to have a boat with more berths than you need. The boats are fully equipped with kitchen, shower and toilet facilities and surprisingly comfortable.

The journey to Oxford affords varied and picturesque scenery for those who are inclined towards that sort of thing and frequent opportunities to moor up at riverside pubs for those who aren't.

Any pre-conceptions of tranquillity verging on boredom are soon dispelled by the need to negotiate numerous locks and assorted riparian hazards such as running around and falling overboard.

A further attraction is the variety of eating places along the river. Of those sampled the following are the most noteworthy:

Bluebeckers, Church Square, Shepperton — Walton-on-Thames 43377

This pleasant and popular burger house is set in the old part of Shepperton, close to the river. Although prices are similar to the London equivalent, portions are bigger and the experience of eating there is enhanced by its village setting. A standard range of burger house fare is on offer and the puddings are particularly good. Shepperton is well within the range of IC for a Saturday afternoon outing and worth a visit.

Load of Bull, 6 Clarence Street, Staines Staines 53252

Not as the name suggests but a burger house with a difference which revolves mainly around the concept of the monsterburger. This

culinary masterpiece puts all other burgers in the shade. Consisting of a larger burger and heaps of chips, mushrooms, salad, coleslaw, fried egg and assorted other goodies, it requires great perseverance to clear the plate. Puddings are excellent, particularly the chocolate nut sundae. Amuse your friends by ordering a special—nudge, nudge, wink, wink—banana split. Although Staines is not exactly a tourist attraction, the monsterburger alone makes it worth a visit.

Browns, Woodstock Road, Oxford Oxford 511995

A trendy and extremely popular, reasonably priced restaurant. A wide variety of cocktails are available at the bar or with your meal. Their speciality is individual Steak and Guinness pies served with an enormous baked potato or vegetables and salad. An interesting feature is their non-smoking section, something which other restaurants would do well to emulate.

For further details about boat trips: T W Allen, Ash Island, Hampton Court, East Molesey. Tel 01-979 1997.



THE ACADEMY OF PERFORMING ARTS & MUSIC

IN ASSOCIATION WITH

INDIA SOCIETY IMPERIAL COLLEGE

PRESENTS

**TWO OUTSTANDING CLASSICAL ARTISTES
IN A CONCLUDING SPRING CONCERT SERIES**

**A SAROD DUET FOR
NORTH INDIAN CLASSICAL MUSIC**

*"... a performance of
dazzling artistry ..."*

*(Ham' & High' review of recent
Camden Festival concert)*

**ASHISH
KHAN**
SAROD



DHYANESH KHAN
SAROD

with ASOKE SAHA — Tabla

SUNDAY 8th MAY 1983

at 7.00 p.m.

GREAT HALL

SHERFIELD BUILDING, IMPERIAL COLLEGE RD S.W.7.
IMPERIAL COLLEGE OF SCIENCE & TECHNOLOGY

ADMISSION £3.00 (£2.00 students)

in advance only.

TICKETS FROM:

IMPERIAL COLLEGE STUDENT UNION

PRINCE CONSORT RD. S.W.7 2BB.

Tel: 01-589 5111 ext:1042



OR BY POST ONLY FROM
MANAGEMENT:

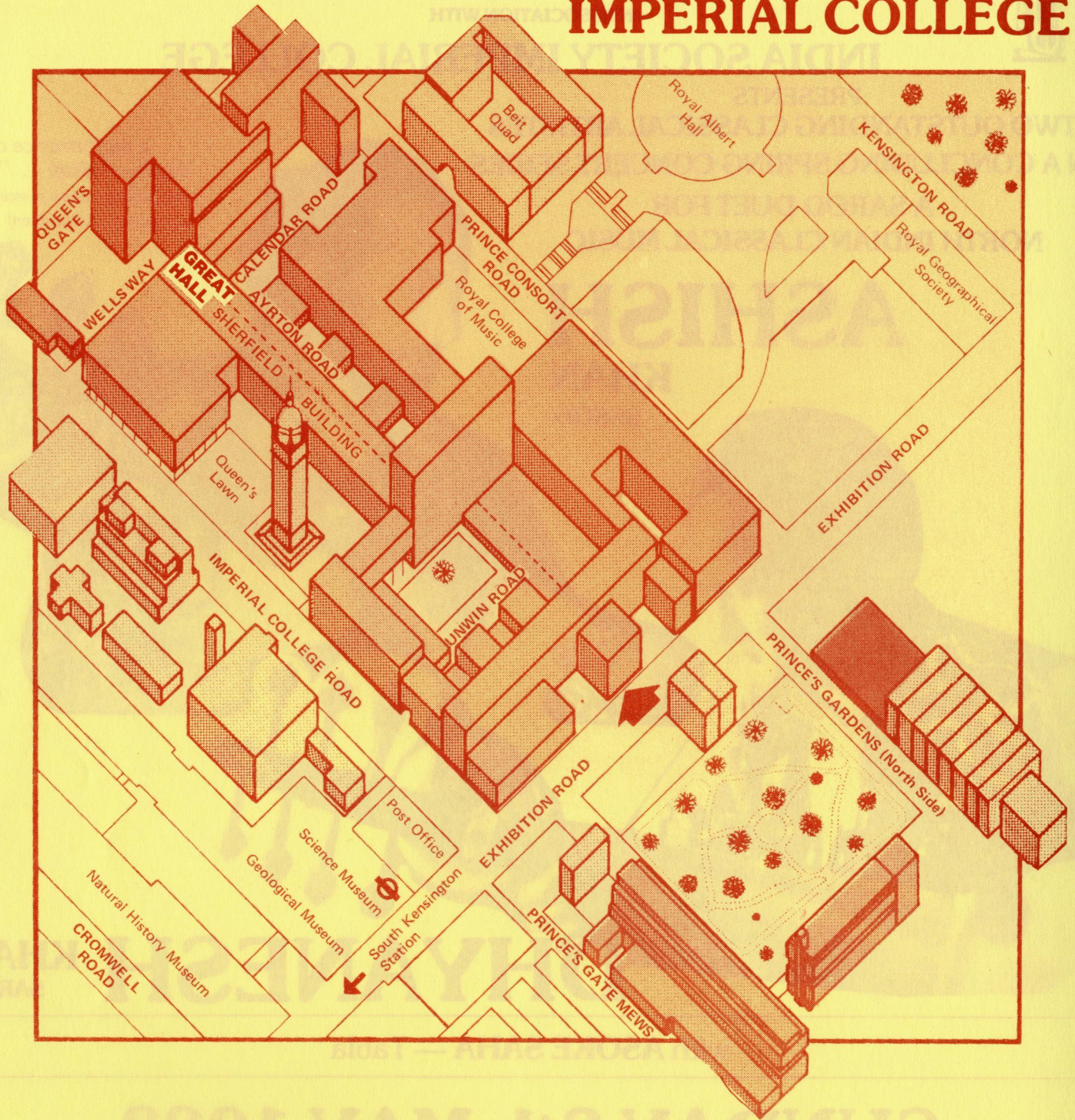
(please enclose S.A.E.)

A.P.A.M.

46 BEAUFORT AVE, KENTON
MIDDX. HA 3 8PF.

PLEASE NOTE: OWING TO COLLEGE REGULATIONS NO TICKETS AVAILABLE AT DOOR

HOW TO GET TO THE GREAT HALL IMPERIAL COLLEGE



Nearest Underground: **SOUTH KENSINGTON**

CIRCLE/DISTRICT/PICCADILLY

HIGH STREET KENSINGTON

CIRCLE/DISTRICT