



FOUNDED IN 1949

BRIAN LLOYD-DAVIES
DEPUTY SECRETARY
533 SHERFIELD BUILDING

5p

All proceeds to RAG

NEWSPAPER OF IMPERIAL COLLEGE UNION

No. 437

Friday, 3 December, 1976

5p

Union goes it alone on AP

A significant stage towards making the Union's Alternative Prospectus (AP) editorially independent of College was reached at Council on Monday evening. The council gave the AP an additional £1,300 to ensure that next year's edition is completely Union financed.

In doing so Council rejected a proposal by the Academic Affairs Officer (AAO) Paul Ekpenyong that the extra finance should be sought from the 'College's Societies' Fund. The need for more cash (£2,600 instead of £1,300) came as a result of policy changes in the printing industry.

Council felt that by going to College for the money it would put next year's AP in an editorial stranglehold, similar to that which troubled this year's (and debut) edition. Then the College Admissions Policy Committee (APC) ordered that the Prospectus be re-edited mid-way through printing.

Next year's AP will be the first one to be fully circulated to schools, since last year's, which arrived two weeks ago, is - due to the APC ordered reprint - only for internal distribution.

Copy deadline for the next edition is Friday January 14th. All entries should be submitted to AAO Paul Ekpenyong, c/o The IC Union office.

Overseas Student fees

Today Mrs Shirley Williams, Secretary of State of Education, received 1000 letters of protest from the students of Imperial College. The letters concern the increase in Overseas Students Fees and Post Graduate Fees recently announced.

**COPY DEADLINE
FOR NEXT ISSUE -
MONDAY 2pm**

UGM disaffiliates ICU from LSO

NUS--You'll decide

IC students will be given the chance to vote in a referendum on whether to remain affiliated to NUS. The referendum will be held in March, at the same time as college-wide ballot elections for the sabbatical officers of IC Union. This was decided at yesterday's Union General meeting, the first to be quorate in two years.

It was also decided at the UGM by a 3 to 2 majority, that ICU should not reaffiliate to the London Students Organisation.

Uproar

The decision to organise a referendum was reached after a noisy debate. This resulted from an attempt to move straight to a vote on the main motion (to have a referendum) immediately after the proposer's speech without any opposing speech.

This procedural motion (that a vote be taken) was carried by a large majority, but uproar followed with cries of 'not democracy' and claims for the right of opposition speech.

Mr Nick Brayshaw, ICU President, pointed out that by right the procedural motion should stand, but sensing the mood of the opposition, quashed it, and allowed a reply to the proposition.

The reply took the form of an attack on the railroading 'tactics of the right wing' by an unidentified speaker. This prompted RCSU VP Steve Braud to call for a card check of Union members. A check was then held.

The meeting then calmed down and the vote resulted in a clear majority in favour of a referendum.

LSO debate

At the LSO debate Mr Trevor Phillips, LSO secretary, (and ex-President ICU) spoke against withdrawal from LSO, pointing out that LSO was an organisation designed to help smaller colleges develop through aid supplied by larger members.

He emphasised that LSO was a young organisation and that large colleges which stayed outside last year have now joined. He said 'ICU

would be going against the trend' if it withdrew and that 'we owe it to smaller organisations to play our part'.

Despite his eloquence, 'ICU has little to show for membership of LSO' said Mr Hugh Barrett (proposer).

'Objectively - we put £500 a year in and what do we get? Trev Phillips and not much else'.

The motion not to reaffiliate was carried by 210 votes to 141, with 26 abstentions.

ICU has been a member of LSO since its formation two years ago, and joined during Mr Phillips' term as ICU President. However the question of ICU's affiliation had never been put to a UGM, this was rectified at yesterday's meeting.

Benefaction given new life

The anonymous benefactor who offered IC £350,000 to build an extension to Linstead Hall has extended the deadline on his benefaction to January 1978.

An original condition of the gift was that the College be 'in a position to start building on the (extension site by January 1977'. This became impractical when Westminster City Council rejected a College plans for the site five weeks ago.

After debating the issue at a Governor's meeting on November 19th, the College has decided not to appeal against the decision, not to oppose the 'alternative' Knightsbridge Residents Association's plans, and to consider commissioning a new design for the extension, dependent upon the view of the Fine Arts Commission.

Dep.Reps. to stay

A proposal that the Department Representatives be removed from Council was defeated by the latter at its meeting on Monday. The proposal came from the Union's Permanent Working Party (PWP), whose spokesman Ros Darling said the Reps were superfluous and presented no useful business to Council.

Opposing the recommendation External Affairs Officer Hugh Barrett said that Dep Reps were more representative of students than the PWP, who along with Old Students reps and Constituent College Academic Affairs Officers should be struck off Council.

Council rejected the PWP proposal but did not vote on any other proposals to diminish Council's size. A more successful resolution from the PWP, that the Union - Executive - as the Discipline Committee - must sit within 10 days of an alleged discipline offence instead of the present 2, was adopted as Council policy.

inside

**SPECIAL RAG
-EDITION-**

**See Centre Pages for
all the fun of RAG
Week**

felix

Letters to the editor

Inconsiderate societies

Dear Sir, - I am sorry if this article consumes a precious page of your already stuffed magazine. But I find this paper a suitable mouthpiece to express some opinions, which I think need immediate attention.

Every year, when the College re-opens in October, we witness many functions, exhibitions, etc. New students become aware of various societies existing in this college. The organisers of the many societies show much interest in enrolling new members; but how many of them take the care of letting their new friends know about the societies' forthcoming events, so that the latter may participate?

Of course, one can see posters hung up here and there; but these are few and far between. Is it not possible to send individual invitations to every member in his department; after all it costs nothing? The Indian Society is one, which doesn't care to notify its new members of their activities. Such organisations should cease to exist.

My second request is for a common room for all Post-Graduate students where they can watch the TV or read

newspapers, both from home and abroad, while having their lunch or enjoying drinks. Of course, the Haldane Library keeps newspapers, but then we can't eat food there. I wish the respective authorities would be kind enough to consider this.

Finally, I would like to mention something about the exorbitant tuition fees to be imposed upon the overseas students from next year. Will not it affect the international nature of this world famous College? We all know that one-third of the students are from overseas. I hope IC Union will not remain a passive spectator. Yours sincerely,
Mr RAMENDRA GUHA,
Post Grad
Atmospheric Physics

Censorship degenerate films needed for

Dear Sir, - On Sunday the 21st of November whilst attending the "SCAB Evening" - a suitable name for what was to ensue - it was my misfortune to witness the most revolting display of perverse, not to mention warped, sexual activities it has ever been my misfortune to cross paths with. I am of course referring to the organised 'Blue Movie'

showing which was part of the above mentioned evening.

I am unaware as to what extent the Union may interject into organised showings of this type, but a case clearly exists for the censorship by some neutral body of such depraved filth. Commonsense on the part of the organisers, coupled with a modest amount of responsibility and a modicum of good taste, would have made censorship obsolete. None of these qualities was evident, so I consider it a necessary and prudent step to rid the College of any future threat of obscene showings. This aim should be strived for with a fabian zest!

I am aware that the definition of obscene varies greatly from person to person, but under no circumstances would I concede that SCAB's blue movies served a useful purpose to this college, except to corrupt the minds of the supposedly intelligent students here. I view bestiality and masturbating - these were explicitly shown - with the utmost contempt.

I conclude by stating that in retrospect I feel hard done by at paying 25p to be present at such a degenerate debacle. The money may be going to a good cause but a means to an end doesn't transform into right.
SPUP
Physics 2

Prophetic Felix?

Sir, - Is FELIX prophetic, or am I confusing cause and effect? I am referring to the apparently controversial College issues you keep raising; for example the latest one being the rejections of the Linstead extension plans.

Unless we can mobilise our friends, the student body and other members of IC, it seems pointless to protest at the plan's rejection. All

Students with whom I have instigated a discussion on this topic either believe it to be no concern of theirs or feel that they are powerless to do anything.

the same we must remember that the benefits of new halls will be future students, able to work in reasonable accommodation, at a fair rent, close to College.

Perhaps Professor Wiggins' blocks could be rearranged around the sides of a square to give a decent, better lit area with tennis courts and car parking space in the open part of the square. So achieving high student numbers and fresh air and light for everyone.

Yours faithfully
MATTHEW CLEMENTS
Physics 2
13 November 1976

... psssst ... want
to travel to Europe
and save up to 50%
off normal rail fares?
go

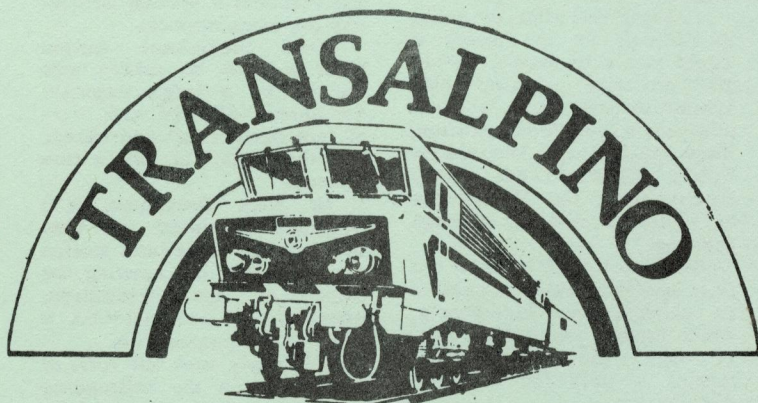
TRANSALPINO EUROPA-RAIL

That's right - you save up to 50% off normal rail fares when you get your tickets from Transalpino. Transalpino is the largest student and youth rail operator in the world. We take more students and young people, to more places, in more trains more frequently than any other operator. That's why Transalpino are so competitive and you save up to 50% off normal rail fares.

All return tickets are valid for 2 months except for Turkey where it is valid for 3 months.

For further details contact:-

Transalpino Ltd
71-75 Buckingham Palace Road,
London SW 1.
Telephone 01-834 9656



EUROPA-RAIL

some sample fares

London - Amsterdam	£10.60 single
	£21.20 return
London - Bruxelles and any Belgian Station	£ 8.05 single
	£16.10 return
London - Barcelona	£25.95 single
	£47.60 return
London - Belgrade	£35.25 single
	£66.25 return
London - Florence	£23.70 single
	£44.35 return
London - Paris	£ 9.80 single
	£19.95 return
London - Istanbul	£43.80 single
	£85.35 return



The chance for everyone to vote on our continued membership of NUS is to be welcomed. UGM's have come to be regarded as farcial as far as representation goes; a college-wide ballot decision is the only true way to judge opinion.

The move, on Monday, to ensure that the AP is not reliant on funds directly from College is, I believe, the right step. The AP should present the student view and feel able to put this across forcefully, without having to seek College approval. Let us hope that this year the AP becomes a true alternative.

Published by the Editor on behalf of the Imperial College Union Publications Board. Printed offset-litho on the Union premises.

FELIX

Editor - Clive Dewey
Sports Editor - Howard Cheetham
Assistant Editor (Business) - Duncan Suss
Assistant Editor (Technical) - Marke Kuse
Hon. Production Editor - Gill McConway
Ian Morse

Editorial Staff - Dave Crabbe, Andrew Evans, Mukozoke.

Technical/Paste Up Staff - Allison Cann, Jim Richardson, Chris Palmer, Terry Westoby.

Business - K.H. Chan

Photographers - Dick Hope, Trevor Poole, Steve Early, Bob de Wardt, Phillip Utting.

Critics - Paul Ekpenyong (Films)

Thomas Stevenson (Plays), Eric

Stovell (Play/Films) Hic (Records)

Cartoonists - Mike Slone-Murphy,

John Lorraine, Tony Jones.

Morale Dept - Jen Hardy-Smith, Chris Palmer.

**FELIX Office, Imperial College
Union, Prince Consort Road,
London SW7 2BB Tel 01 589 5111
ext. 1048/1042/1043 Int. 2881**

HALL DINNERS

Hall dinners take place every Tuesday evening in the Sherfield Building. Tickets are available from PAT in the Union Office until Noon the Friday before; price £2.55. The dinner itself starts at 7:30, with sherry from 7pm

Jewish Society Outing

We will be visiting Bloom's famous Kosher restaurant in the East End of Tuesday 7th December. This is always a great evening. Meet 6.15pm in Mech Eng, Foyer. Approx £3 cost. Contact Charles Culler (Civ Eng 2 or 202 0642) by Monday 6th Dec to book your place.

City Poly : Tory Rep Top

Seven delegates have been elected to represent the City of London Poly at the NUS conference, of whom a Tory topped the poll. (PEPYS) Six out of nine delegates from Leeds Poly are conservatives too. (Leeds Student)

Brunel raid IC unions

Raids at the weekend on Guilds and IC Union indicate that Brunel University are eager to regain their lost mascot, Izzy - a six foot high fibreglass dinosaur.

The first signs of this were when Guilds archivist Iain Cairns saw strangers loading the Guilds pedal car into the back of a van outside the Mechanical Engineering building. This was mid-evening Sunday; he telephoned ICU Deputy President Derrick Everett who called the Police.

By this time the van had been loaded, locked, but not driven away. The Police opened the van and removed the pedal car, which had been taken from the Guilds store-

cupboard in Mech Eng. College officials believe that the ASSA lock to the cupboard had been picked.

A different method was used to search the Union building for Izzy the same night; the Union believes that a College master key was used to open the locks here. The search was first discovered when the DP noticed many usually locked doors open. This is not the only occurrence of this type of incident recently.

Two weeks ago Brunel University said they were uninterested in regaining Izzy from IC and refrained from meeting ransom demands for the mascot.

New Council

baby

Union Council agreed on Monday to set up another major-sub committee of itself to cater for Overseas Students. A constitution put forward by the Overseas Students Action Group was also accepted.

The Council decision follows last month's revival of interest in Overseas Student affairs by EAO Hugh Barrett and Academic Affairs Officer Paul Ekpenyong, (Felix 434). Both expressed themselves happy with the current developments.

RCC

RCC General Committee Meeting decided to close down the Historical Re-Enactment Society. Any property formerly used by this club must now be returned to RCC.

Contact the Hon Secretary, M Elliott via the Union letter rack.

POSTER PURGE

Last Friday saw the annual purge of illegal posters from the Union building. 104 posters were found to be contravening the Union's rules for publicity. The offending societies responsible for the posters, will now be charged £2 for each offending poster; the money so raised will go towards repainting the Union.

Need a lift.....give a lift

A file of those requiring lifts (by car) to IC and those prepared to offer them is now being compiled. Details - please keep these to a minimum - should be placed on a plain postcard and sent to MISS J CRAWLEY, Department of Geology. A typical card would read thus: (top line) Offered/Wanted, place of starting; (underneath) name and internal contact point.

(No 'phone calls and No Long Letters, just the essential facts on a postcard.

I.C.
CONSERVATIVE
SOCIETY
DR. KEITH
HAMPSON M.P.
TALKS ON
THE PROSPECTS
FOR HIGHER
EDUCATION
ON TUESDAY 7th DECEMBER
AT 12.45 IN MECH. ENG. 664

(All Welcome)

RAG STOP

Sheffield University have been told that there will be no Rag procession next year unless the police get a 'stop police' sign - normally found on top of panda cars - back. The police believe the sign was stolen by students during Rag Week. (Dart)

Busology

Newcastle University's transport operations research group has been awarded a £32,000 grant by the Science Research Council to investigate practical methods of improving the operation of urban bus routes. (THES)

Executive Mutters

Congratulations on still actually being with yourself somewhere within your brain cavity.

God, what a Rag Week! I'm exhausted! However, I do have one teensy weensy little complaint and that is that Morphy Day just wasn't dirty enough. There was, nevertheless, the consolation of not only getting into Harrods unharrassed, but also being served on the fourth floor (!) restaurant - the perfumery department will never be the same again.

WHITE LIES

by John White

IC Union Hon.Sec.

I hope you all enjoyed yourselves; my pickled brain is still bubbling away to rhythmic pleas of "when can I have some sleep?"

Notwithstanding all this, back to reality and ---

Student Residence Officer and Hon Junior Treasurer.

At the moment two major areas of concern to us all, namely Accommodation and Financial Control of Union Resources, are in desperate need of some form of permanent overseeing.

The former post, that of Student Residence Officer, is concerned directly with accommodation matters. He is chairman of the IC Union Accommodation Committee, and sits on the Union Finance

Over the last two years, if not for a much longer period, IC Union has been looking very critically at its own structure. 18 months ago the 'Working Party on Union Resources', chaired by Gordon Jackson, proposed the creation of a new sabbatical post, replacing the present Deputy President. The new officer would be chairman of both House and Finance committees.

Then last year we saw the 'Working Party on Union Response'. This looked critically at the present committee structure, and rejected the idea of enlarging Union Council to form a 'Student Representative Council' as advocated by Pete Teague.

This year we have the new Permanent Working Party, a revamped Floor committee, which is looking further at the Constitution and Structure of the Union.

That structure has evolved over half a century, but the form summarised in the diagram below has remained almost unchanged since the late 1960's, the days of Piers Corbyn, and of the referendum on Union Structure, which decided to affiliate to NUS and not to disband the CCUs.

So here's a quick rundown, as one hack sees it of the present arrangement. The sovereign body is the *Union General Meeting*, at which all Full (ie current student) members may vote, and Life members may speak but not vote. It decides all major policy matters, in particular our policies on external affairs, residence and refectory policy.

The format, for those of you who have never attended (slap your wrists,

Committee, and the Union Welfare Committee. For his sins he also sits on the following College Committees:- the Student Halls Committee and the Student Houses Committee. As can be seen, the post does entail a fair amount of committee work but nevertheless most of the work is done at grass root level ie dealing with people.

The latter post, that of Hon Junior Treasurer, is a post not in direct control of the overall financial picture of the Union - this control is vested with the Union Finance Committee and implemented by the Hon Senior Treasurer, Dr Ken Weale (who is a wonderful person, a really great guy and please sign that cheque for my Christmas break in the Seychelles, Ken!). Ken would currently like to know where his Junior Treasurer actually is.

The job generally entails assisting the ICU Senior Treasurer in many ways and, more specifically, keeping a watchful eye over the expenditure of Union Committees, co-ordinating the preparation of the annual Union estimates for submission to the College, maintaining the inventory of Union equipment, collecting and banking of money, and the committee work too (only Union Finance Committee in his case).

If anyone is interested in either of these posts (please note that despite my phraseology, you don't have to be a "he" to take up either post) then please, please contact me as soon as possible.

NUS Discount Cards

This scheme has not been involved in the current crash of NUS Travel and is still functioning. The second batch of cards have in fact arrived. For all those lovely people down at Silwood (I know you're there but you still haven't sent me a postcard) I have sent you down a consignment of Discount Cards and these are available from your Committee (ICUSPC). See John Mumford (Chairman) or Martin Hall (Hon Secretary) for details.

NUS and its Service Companies

After the NUS Executive decision the current state of affairs is:

(i) NUS Travel Ltd has ceased trading and is being wound up.

(ii) Endsleigh Printing Services (University naughty people) is Executive reports, elections, motions, and any other business. If you want to complain about Felix (say), or Refectory prices, or the reduction in cleaning in halls, or to call for my resignation for writing such drivel in Felix, -(Verbal Diarrhoea - Typist)- then this is the forum in which to do it.

The execution of these decisions is then up to (i) the President, who may delegate matters to other members of



ORANGE MOLE

by
Derrick
Everett
IC Union
Deputy President

the Executive; and/or (ii) Council, in particular regarding the financial implications of the decision. Council may only refer a matter back to a UGM once, and is analogous to the House of Lords in this respect. Usually Council will refer matters for further debate to one of its sub-committees.

If the decision of UGM or of Council affects the use of Union rooms, eg organising a conference or a jumble

print) has ceased trading and is being wound up.

(iii) Soate and Blackwell Ltd (Photomech) has gone into liquidation.

(iv) Endsleigh Marketing Ltd (NUS Marketing is continuing trading.

(v) Endsleigh Insurances (Brokers) Ltd is continuing trading.

Matters which would seem to be likely to be of direct relevance to IC students will, I hope, be covered by the following: (a) If you have booked with NUS Travel, they will try and get you out on the same scheduling but may not be able to do so. Should you not wish to travel by the new scheduling you can claim a refund.

(b) NUS Marketing - calculators, sleeping bags, etc are still going, as (iv) states, however in a main mail from NUS it says: 'It is our belief that it was too early to assess the current viability of Marketing, and therefore that it should continue as normal.' The decision over this must therefore be yours. The forms for Marketing are still available in the Union Office.

(c) Endsleigh Insurance is still valid and the company appears to be doing ok.

British Rail Student Cards

After the folding of the NUS Travel Centres British Rail are now retailing the Rail Cards direct to students. The method by which this may be achieved is as follows:

(i) Write to British Rail for an application form (or call in) at the address given below. Send a SAE.

(ii) Fill in the application form and get it signed by your Senior Tutor or similar (it'll probably be best if you get an official stamp on it too)

(iii) Send the completed form, two passport size photos, and a cheque for £6.50 made payable to *British Rail, not NUS Travel*, to the address given below and you will receive the Rail Card by post.

The nearest place to write to is Paddinton Station and the address is: Chief Passenger Manager, British Rail Western, HQ Offices, Paddinton Station, LONDON W2 1HA

That's all for now, take care and see you around.

sale or whatever, arrangements are discussed by House Committee.

This committee also discusses the redecoration and furnishing of the Union areas, the booking of rooms and the allocation of rooms and equipment for maximum efficiency. By its very nature it controls a large chunk, (on average about 8%) of the Union's income.

More generally, Council may refer matters for fuller discussion to (i) the Permanent Working Party, (ii) the Executive Committee, or (iii) an ad hoc Working Party.

Various sectional interests are represented on Council by the chairmen of the four (perhaps soon to be six) major sub-committees, the President of ICWA, the chairman of the Postgraduate Group and the Academic Affairs Officers of the CCUs. The dept reps also represent, to some extent, CCU interests on Council, as do the Presidents of CCUs. The latter comprise half of the Executive Committee.

Between them the chairman of the major subcommittees represent about 100 Societies, the part of the Union with which most readers will be most familiar. It would be impossible for one person to co-ordinate the running of all these societies, although other large Unions have created a sabbatical post for this purpose.

Co-ordination exists between these major subcommittees by means of the principal officers (President, DP, Hon

Continued on page 11

The Whys, Buts & Ifs of Xmas Social Security

There has been a certain amount of confusion over the present situation regarding vacation benefits. When the new grant came into effect in September '76, the composition of the grant was changed, increasing the vacation element, which is only payable during the Christmas and Easter vacation, to £11.35, this amount being deducted from any supplementary Benefit claim made.

How to Claim:

Claims can only be made when you are available for work, so you must try and find work; go first to your local Job Centre where they will try and provide you with employment. It will be considered unreasonable if you turn down general employment, but you wouldn't be expected to undertake heavy physical work or unsocial hours.

If you fail to get a job after having made an effort, you should ask the clerk at the Job Centre to register you unemployed. He will then direct you to the Unemployment Benefit Office to register. At this stage ask for form B1, as without this you will be unable to receive Supplementary Benefit (ie you will get nothing).

When you have completed form B1, post or take it to your local Department of Health and Social Security (DHSS). Also make an appointment for an interview there. When you go to the interview make life easy as possible by taking along documentary

evidence of your assets, bank statements (savings up to £1200 won't affect your claim), together with your expenses such as rent books.

If your claim is satisfactory, payment commences on the pay day after your form B1 has been received. The amount and duration of your benefit will be printed on forms B 2/3 when you next sign on at the Unemployment Benefit Office.

How Much Will you get?

The basic allowance is for £10.15 per week if you are not a householder; to this a rent allowance of £1.20 is added. Rent is paid in full if you are residing at your permanent address. If you go home but still have to pay for your term accommodation, you should claim an Exceptional Circumstances Addition towards this cost.

As the single non householder scale rate is the same as the vacation element of your grant, it is unlikely that you will receive any benefit if you go home and are not paying for your term accommodation (ie as IC halls and houses). Nevertheless, the important fact is that you should still claim as the DHSS have made no compensation for the parental contribution.

The situation can be difficult to comprehend so if you have any problems, please contact the Welfare Centre any lunchtime between 12.30 and 1.30; the Centre is on the 3rd floor of the Union Building.

Bonjour young ladies at IF!
Ici c'est notre page,
Nous should print something
every week -
Laissez-moi enlarge...

On ecrit des choses which
have occurred,
En vacances, chez vous,
or here
So get yer plumes out all
of you,
Lets keep it up this year

Rag Week has now taken
place,
Ca aide de bon relations,
C'est bon to see you all
join in,
Quelle participation!

The Rag & Drag was
jeudi soir,
On faisant des betises,
Avec A.R. M. Alayrangues
et moi comme juges
IF won - quelle surprise!

Our Soc Sec reigns as
"Reign du Rag"
With crown and gown and
tears (well almost),
Then followed tous les
drag artistes -
What a bunch of queers!

Samedi saw the Rag Pro-
cession

But from IF there were
few
I'm getting sick of writing
this
And I daresay you don't
find it scintillating
reading

either, so I'll stop trying to
make things rhyme. My muse
isn't exactly raining inspira-
tion down on me at the mo..
There must be a blockage on
the Celestial Aid Line. I
hope you've all got the gist

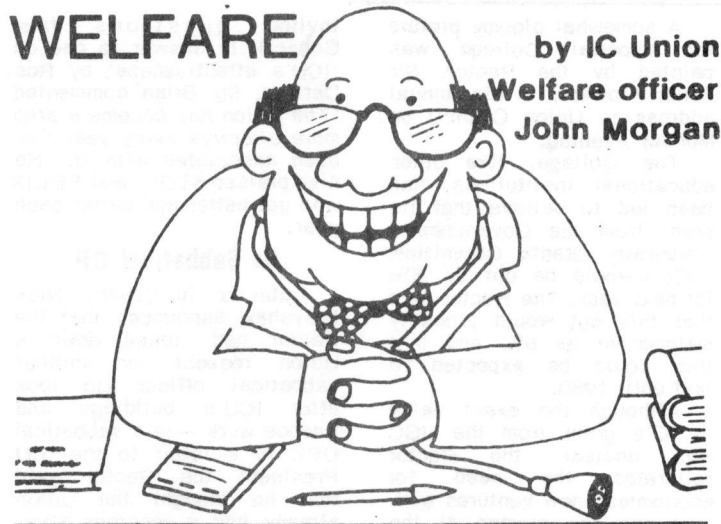
if only

of what I'm on about anyway,
and all articles will be
accepted and some of them
even gratefully.

With the re-appearance of
IF. Only you may notice a
certain rather sordid column
creeping back into FELIX.
Now for all of you who don't
know what I mean, you will
doubtless discover within the
next few weeks, that there
are certain young men at IC

WELFARE

by IC Union
Welfare officer
John Morgan



Are you able to cope with a rape crisis?

Imagine a situation; you are at home on your own, and a close friend comes in. She may be hysterical and incoherent, or she may be so calm and collected that you have never seen her that way before. You give her a coffee and eventually she tells you that she thinks she has been raped, and she does not know what to do.

So now you have to help her; but do you know what she should do? Should she go to the Police Station and report it, or should she go directly to a doctor? If so, how soon? If she goes to the Police, she may have to go through hours of questioning, and you can see that she is in no state to be able to cope with this. Besides, she only said that she thought she had been raped. As she is reluctant to talk about what actually happened, how do you find out

who take a sadistic delight in retaliating to IF Onlies. They go under the false name of T.P. - obviously trying to impress by shielding themselves under the initials of a well respected (? - Typist) ex-president of IC (now at LSO). Although their education

if it really was rape?

Well there is a group that you can phone up, and talk to, called the Rape Crisis Centre.

They will talk to you, share experiences, give you legal advice, go to the Police Station with you. If you decide to press charges, will go to court with you.

Most of the women at the centre have themselves been through this experience, and try to help other rape victims by operating a rape hotline (emergency no. 340 6145)

On Tuesday December 7th at 7pm Kathryn Muller will be coming to talk about the centre. So if you are interested come along then to the ICWA Lounge. Sherry will be provided.

This talk is jointly organised by ICWA, and Women in Science.

F McGregor
Physics II.

FELIX headliners, so that one's out. We've had suggestions of IFU do, IFU don't, PRIFabrication, and, of course, all the sundry crudities that always seem to crop up from certain sectors. Well...

Je susis presse - got to go,
Bye bey then me amis,
Beaucoup de testes ont lieu demain,
So that's yer oot - FIN!
lots of love,
Julia

GRAFFITTI CALENDARS

Graffiti, have a limited number of desk calendars, printed in 5 colours using the latest screen printing techniques available to us in college. Covering the academic year from October 1976 to June 1977 they will initially be for sale at 20p from the Graffiti Workshop, situated in the Union Building, level 2 behind the Gym. If you would like a calendar, or wish to

A somewhat gloomy picture for Imperial College was painted by the Rector, Sir Brian Flowers, in his annual address to Union Council on Monday evening.

The College, like other educational institutions, had been led to believe that its grant from the Government's University Grants Committee (UGC) would be cut by 40% for next year. The Rector said that this cut would probably materialise as 6%, and that this could be expected to last until 1980.

Although the exact value of IC's grant from the UGC was unclear, the Rector reiterated the need for economies; new ventures will only be started at the expense of old.

However, a 6% cut would

invited questions from Council. In answer to one on 'ICU's effectiveness' by Ros Darling, Sir Brian commented 'The Union has become a step more effective every year I've been associated with it.' He also praised STOIC and FELIX who got better and better each year.

No Sabbatical DP

Later on in Council Nick Brayshaw announced that the Rector had turned down a Union request for another sabbatical officer (to look after ICU's buildings and finance work - ie a sabbatical DP). In a letter to the ICU President the Rector said that he thought the Union already had a generous allocation of sabbaticals (at present three).

kouncil kapers

A report on Monday night's Council meeting

impose a need for redundancies greater than the normal wastage. The paradox here, was, said the Rector, how could colleges make staff redundant - so paying them redundancy money - whilst cutting back on overall expenditure. This problem was faced by all universities and would have to be solved nationally.

Fees disappointment

Sir Brian went on to express disappointment at the new course fees for next year. The Government's decision was 'the worst possible choice'; both he and the Committee of Vice-Chancellors and Principals were against discrimination against overseas students. They would rather see discrimination between undergraduates and post graduates. Now the Government had both.

The only note of consolation was that the drop in value of £ might lessen the effect of fees increases to overseas students.

Afterwards the Rector

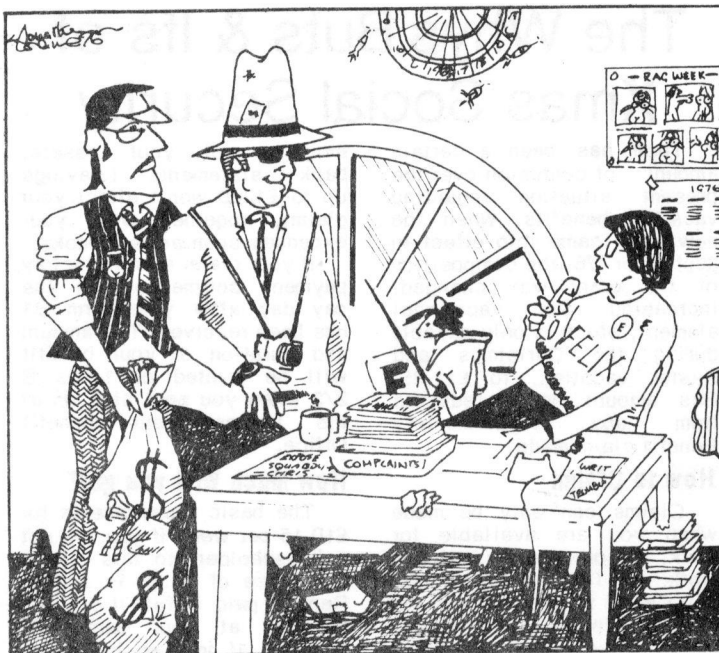
Other matters discussed at Council were:- The size of council (see front page), a new Overseas student major sub-committee (see front page); a proposal that the ICU Bookshop or the Union sell quick turnover goods such as slop shirts and sports equipment was referred to the Permanent Working Party.

Fees letter

Council heard that a letters opposing the new fees increases would be sent to Education Secretary Shirley Williams on Friday. The letters would be duplicated by IC Union, signed by students and delivered in bulk to Mrs Williams.

A proposal from the Honary Secretary that main Union officers submit interim reports (on their work so far) to the next Council was carried.

At the meeting RCS Union were awarded £400 to cover overspending on last year's handbook, RSM Union's PG Group was given £120 and STOIC £100 to cover increased studio bills.



"You say you're from ATLANTIC RICHFIELD?!"

V.I.P. plus kilt

Joan of Arc, Newton, Faraday and Darwin have something in common (apart from being dead, that is). They are all very important Persons - to Prof. Scorer of the Maths Dept at any rate. At last Monday's Wellsoc lecture he tried to show that his VIP's are only produced by avoiding the established educational process - the only way that people can grow up to ignore traditional authority and thus to break new ground in their chosen field.

Prof Scorer - dressed in a red, blue and green kilt, matching tie, sporrans etc (but NO dirk!) - included a survey of the Earth's history and showed how vital the presence of life is to the composition of the atmosphere. He then looked at Homo Sapiens himself, and tried to justify his label of 'Clever Morons' by pointing out that,

although science and technology are all very well, Society engages in only short term views of the world.

Hence the population, mineral resource and energy crises. Indeed, by comparison with locusts, he suggests that the Earth is suffering from a plague of humanity. The reaction to this shows up in politics as demands for devolution in this country and separatism in Quebec, Bavaria etc as the individual becomes increasingly swamped by the exponentially increasing population.

Even for those who disagreed with some of his points this was a thought provoking talk. Further talks this year include 'Extraterrestrial life,' 'Cults of Unreason,' 'Vikings and Martians' and 'Climatic change; Global Catastrophe?'

GRAHAM RENNIE

ICWA

Due to the lack of response we have decided to cancel the ICWA Treasure Hunt and return all entry fees. For the sake of the ignorant I shall explain the clues and also give you the fourth clue and see if you can manage to solve that one.

1st Clue:- The capital was Lisbon whose money is escudos. Not black but white means swop the B for W; confused gives Wilson who is also the MP who is investigating the dealings of the city. So simple, it makes you feel a fool doesn't it.

2nd Clue:- The answer was Bowers which was so simply I can't really say any more.
3rd Clue:- Well unless you never went to school before you came here the answer was simple - Scott Ash Madeleine to explain.

If anybody has any confidence in their own ability left then here's the fourth clue:-

For what you seek you all

can find opposite a temple, unless you're blind beside a Wellington - (not Paddington bear's) Its there to see for he who cares.

Judging by the answering ability on the previous clues I'll give you 'Till Easter to think about it and until summer to think about the answer!!!

ICWA Xmas luncheon

I must also apologise to people who turned up for the ICWA disco but it was cancelled. The disco scheduled for Dec 11th has also been cancelled but they will be back next term.

The Christmas Luncheon, to be held on Tuesday Dec 14th at 12.30 in Union Dining Hall, will cost 75p. The menu consists of a portion of home-cooked chicken, sausages, salad, sweet corn salad, jacketed potatoe, mince pie, satsuma and cider. Tickets are on sale from all ICWA reps or Room 98 or 112 Beit Hall.

Isobel Donnelly

rsm union

Extraordinary General Meeting

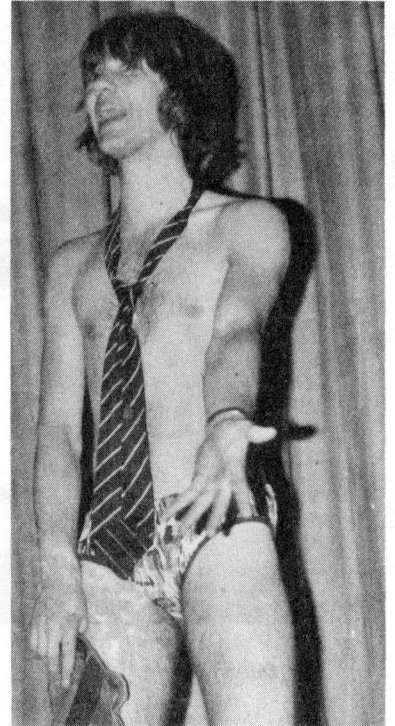
Tuesday 7th December
12.45p.m.

Geology Lec. Theatre G.20

AGENDA INCLUDES

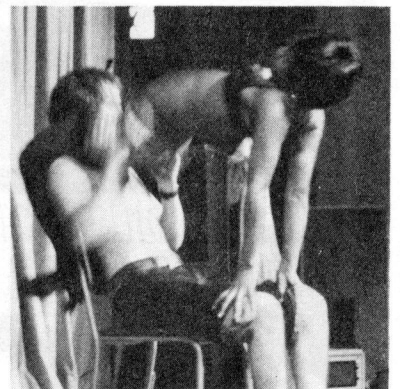
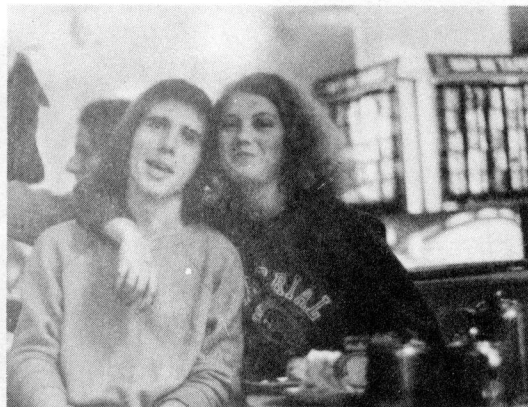
Proposed Constitution

rag week



Photos (This page): Paul Kurowski cuts(?) the cooked cow at the Barbecue on Tuesday (23rd Nov.) in the Union Quadrangle (top left); Competitors in the 3-legged Pub Craw (middle left); RSM VP Steve Paterson (Squaddy) imitates the stripper at Thursday's Smoking Concert. (top right) (bottom row L to R) A participant in Wednesday's Morphy Day relaxes in Harrod's cafeteria afterwards; ICU Hon Sec Chalky White & IF's Julia Ross enjoy a cuppa in Harrod's 'Way In' cafeteria after Morphy Day; The stripper engaged in a bit of harmless fun with a willing volunteer at Smoking Concert.

Photos (Back Page): London College of Dance & Drama (CCDD) entertain the audience at Smoking Concert (top right); (bottom row L to R) A girl from CCDD in an 'intricate' dance routine; More fun for some lucky lad with Smoking Concert's stripper.



rag week



Rag Queen Paula Marriott

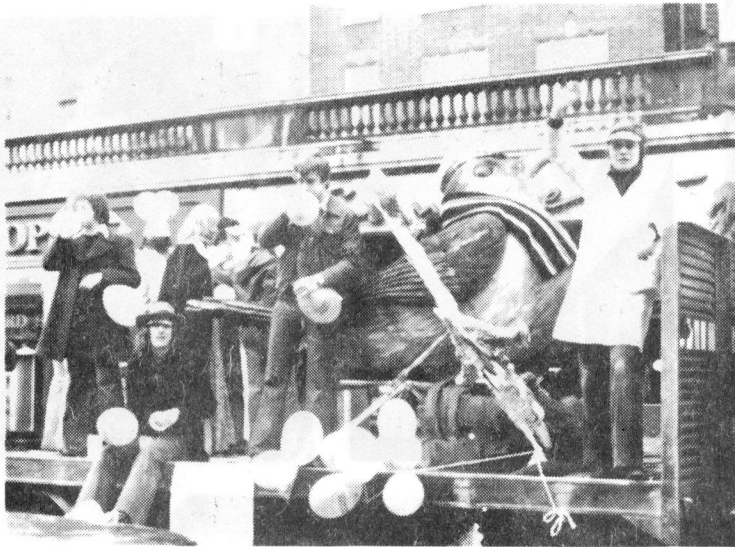


Scenes from the Rag procession



1976

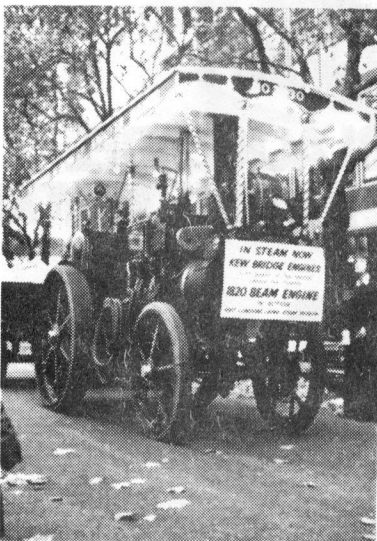
rag week



The RCS Rag procession float



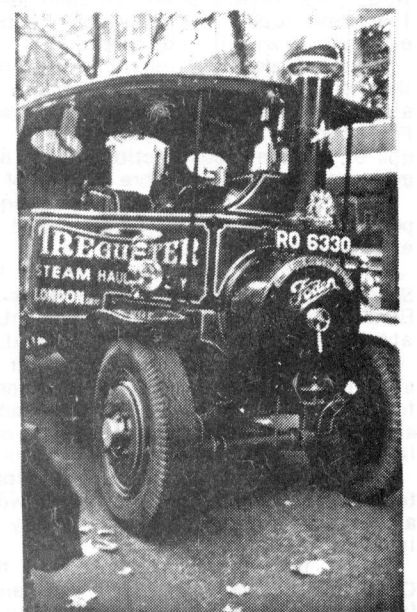
Action at Morphy Day



Above & far right - Traction engines add colour to the RAG procession



CCU Presidents line up for the start of Morphy Day.



1976

rag week



Terry Bennett Sassafas

Photo: Brian Cooke

Guilds' Carnival

It's difficult to write a review of Guilds Carnival, there's so much and so little you can say - so much good entertainment and buggery all to grumble about.

Alan White made me glad I'd gone to Carnival; it wasn't that his songs are original - they're not - but it was the enthusiasm and character he put into them that counted. Broadly speaking he's a folk artist that enjoys having a good time, jokes around a fair bit, and takes the p out of xxxxxxx like Dave Lord. He went down extremely well and warmed everyone up with the odd 'chorus'.

Squeeze were a different kettle of fish. Unlike Alan White they didn't have to ad-lib to chants & in-jokes of eels and alsatians. They're a down to earth band - not so much as the Feelgoods - who could justifiably fit into the respectable end of the punk rock section. Basic & unpretentious, they had many people dancing before the end of their set.

By the time Sassafas came along I was really into the party mood, courtesy of the disco and the general crowd at this extravaganza.

More sophisticated and talented than their predecessors, Sassafas proved worthy bill-toppers. I'd seen them down at Reading in the summer, when I thought they were just brash and abrasive enough to Hearten a festival audience.

Last Friday they were somewhat tamer. There was more attention to the fine grizzly detail, and I could hear the vocals for once. Their repertoire was a mixed bag of intellectual rock and hard hittin' trucking music. A lot of it came from the band's latest vinyl effort 'Riding High' on Chrysalis.

As the night progressed Sassafas boogied a lot more, taking with them a now gullible crowd. They finished up with a couple of Beatles numbers - a pity since their own material is quite original.

Apart from the films, the beer, the disco etc, that was Carnival. It came over rather well and there was certainly a fair whack of good organisation behind it. Ta very much Guilds.

Clive Dewey



CARLING BLACK LABEL - THE BIGGEST THANKS TO YOU

Continued from page 4

ORANGE MOLE

Sec) who are ex-officio members of these and all other Council sub-committees; the President and Hon Sec are sabbatical officers.

Office facilities, ie typing, duplicating, stationary supplies for these societies are provided by the Hon Sec and their equipment is bought from the equipment fund administered by the *Finance Committee* (office equipment, such as filing cabinets, is allocated by House Committee from another fund).

So what does Council do apart from listen to these sectional interests, Bitch at each other and fight each other for space, money and prestige? Well, it meets about ten(?) times each year to consider reports and recommendations from the sub-committees and criticise their actions if necessary.

At Council Welfare, Academic affairs, External affairs and Publications are probably the four main areas outside the Exec reports. Under the first two headings are a multitude of sins, such as Health, Safety, Accommodation, the Alternative Prospectus, Representation on College Committees, and new courses or changes in syllabuses.

Council also elects representatives to

sit on the many College Committees on which it has been allowed representation. The co-ordination of these reps is then the business of the President. Improvement of their reporting procedures and accountability is a matter which Council has recently been discussing.

Comparison with other colleges

Looking at the Unions of other colleges, we find a number of differences. Many arise from our CCU structure, which is almost the same as the JCR system at Reading, York or Lancaster, although the physical delineation of the Constituent Colleges has almost disappeared (look at New Huxley). Our Exec committee is much smaller than at most other Universities and has less power.

We have fewer sabbatical Union officers per capital than other Unions, and so matters are still delegated by Council to a Plethora of sub-committees, and effectively to their chairmen.

One consequence is that fewer officers are elected by campus-wide ballot (4) than at most other large Unions. Another is that the representatives on one College committee are often in ignorance of events at other committees until the next Council meeting. Perhaps more power in fewer hands is the answer - it would also make greater competition for posts, most of which are unopposed, and so produce a more representative Council.

There are three areas which, in many large Unions, are represented on the

Council and often directly on the Executive; these are Entertainments, Publications, and Transport. At IC, probably for historical reasons, the Ents Committee has been treated as a society and has little 'political' weight.

Publications is an area that the Union is just beginning to notice, and through Publications Board the media are coming close into the Union structure.

Transport is a thorn in the Union's side, since it has never been organised centrally in the Union, always being left to one of the major subcommittees (or two of you include coach hire). There are many problems in this area - ask any member of Council or of the ACC and RCC general committees!

I hope that this article has given some of my readers (hello - has anyone reached the end of the article?) (thank the good chap above - yes Typists), an insight into the Union which runs the societies to which they belong, and which publishes this newspaper.

I now hope you'll put your pens to paper and make a few criticisms of the Union either direct to the Permanent Working Party, or through the letters column of FELIX. (May they please be, short, sweet and legible:- Typist).

Eds note:- Owing to space considerations Felix is unable to reproduce the diagram enclosed with this article. Nevertheless the article renders the diagram almost superfluous.

PLAYS

Nights at Waterloo

Miss Pat Simmons retired last Friday, having answered 430 million 'phone calls in the last thirteen years. At the Young Vic in The Cut, near Waterloo Station, a double bill of plays by Tom Stoppard has opened.

The connection between those two sentences is the play *If You're Glad, I'll be Frank*, which opens the Young Vic evening. Based on a clever idea, whose force is spent in the opening minute, and a contemplation of the nature of time, the play has, as its central character, the girl who tells you the time if you dial TIM (or rather 123 in these days of technological success).

Natash Pyne plays Gladys, presiding over the multiple set from her perspex booth, musing about the differences between time measured in seconds and minutes and TIME measured in ages and aeons. Roy Hudd appears as her husband Frank, a bus driver, chasing up the echelons of the Post Office to the First

Lord, who reveals the secret of TIM to him.

Originally a radio play, *Glad/Frank* serves as a curtain-raiser to the main boat of the evening - The Real Inspector Hound, a glorious send up of those pretentious critics who endlessly compare performances ("The finest cynthia since the war").

Mr Hudd appears again as the critic Birdboot, ever lasting after the leading lady, whilst his companion Moon (Geoffrey Hutchings) dreams of becoming the first string critic of his paper. The play they have come to see is a splendidly ham performance of a thriller in the "Who killed thing; noone will leave the house" vein. Mysteriously the critics are drawn into the performance in a way which it would be churlish of me to reveal. Suffice it to say that the double bill is delightfully presented and well worth a visit.

Meanwhile back at the ranch-house, or rather the Lyttelton auditorium at the National Theatre, Thomas Bernhard's *The Force of Habit* is playing in two acts. The first compares favourably with Beckett's *Waiting for Godot* in the boredom stakes, although things begin to brighten up in the second, by which time the auditorium looked considerably

emptier. The play is set in the decrepit caravan home of a circus Ring-master. Outside the caravan the characters are Juggler, Tight-rope dancer, Clown and Lion tamer, but inside, with the Ring master, they are to perform the *Trout Quintet* of Schubert; or rather rehearse it, since the Ring master's only hope is to keep his troupe together long enough for them to become proficient musicians.

What improves the second act is that the instruments are out and the actors show themselves to be not at all bad musicians. Oliver Cotton's Clown dolefully draws the Trout theme out on his bass, whilst Warren Clarke's Lion-tamer goes through agonies on the piano, his hands bandaged after a mauling from a lion. Imperturbably in the middle is the Ring master, Philip Locke, full of legends of his hero Pablo Casals, reminding his players that all will be better "in Augsburg tomorrow".

The ingenious setting, designed by Timothy O'Brien and Tazeena Firth contains, besides the open-sided caravan, a large lorry and an enormous number of empty beer-cans, which are kicked about mercilessly by the departing actors.

Thomas Stevenson

Satre tragedy flies back to IC

Eric Stovell previews the forthcoming Dramsoc production 'The Flies'

On four nights next week (Wednesday December 8th to Saturday December 11th at 7.30pm in the Union Concert Hall) Imperial College Dramatic society are presenting Jean-Paul Sartre's 'The Flies'.

The plot is loosely based on the Greek tragedy of Orestes, who returns home after an absence of fifteen years with high ideals of avenging his father's murder. But the hostile reception he gets from the diffident townsfolk and, indeed, from his sister Electra, change his mind.

This story was of particular interest to Sartre because he wrote it during the early days of the last war when France had been overrun by Hitler's troops, but had not yet formed an underground resistance.

Satre's version of the story reveals some of the ideas to be found in his other plays and books, particularly in Orestes struggle for freedom from the influence and control of the god Zeus.

Tickets, which for students are only 40p, otherwise, 60p, are available either at the door, or from the Dramatic Society storeroom on the third floor of the Union Building; Above the Union Office (int. phone number 2854).

FELIX

T-SHIRTS

now available
from the
Felix office
ONLY £1.50

IC 'perversion' - fact or fantasy?

The Rector and College Administration are in for quite a shock when they see next month's press cuttings (for IC), if this month's edition of *Lovebirds* is anything to go by.

For sandwiched in between the stuck pages of this new bastion of light-porn is an article on the sex life of us students at IC. Not that I mind when someone does a feature of my private fantasies, but when the lady concerned calls the resultant article 'The imps of perversion popping it off in South Ken', then I do start to take notice.

In point of fact I didn't have anything to do with this article, our ex-printers just happened to drop FELIX a copy. However, if you can identify 'Horny Jim' you may be able to shed some light on this amusing story.

Jim is the only IC student interviewed in *Lovebirds*, although publisher and editor Mary Millington says that she talked to more students when she came here 18 months ago (Eds note - The magazine is new and hence works a fair bit in advance).

What prompted her to write about the sex life of students? 'Well, most students are pretty articulate and interesting people, and I wondered why nobody had bothered to find out what their sex lives were for.'

In the 2 page article we

learn that Jim is tall and dark with a wiry body. He comes over as a conceited stud, 'When word got round that I was hot stuff you should have seen the numbers of girls that flocked around me. I was the screw of the year as far as some of them were concerned and I never lacked a girl to take to bed with me', says Jim.

Then something changed his attitude to sex and he became a 'maute male, with plenty of kinky sex habits'. Up till then Jim had had 'straight sex', but now started dabbling in group sex.

The rest of the article is a rather graphic portrayal of Jim's first group sex experience at Romford, Essex, with two bisexual girls - one an ex-girlfriend who also goes to IC.

'Well that was horny Jim ... students are sexy', says Miss Millington at the end. But is the article genuine. 'Yes' said the former nude model when contacted by FELIX. Certainly the photos outside the new Huxley Building of Miss Millington are genuine, although she neglects to mention the IC male/female ratio - but puts in that we have 4,000 students - and mentions no bars, etc where she met students.

There just remains the question of who 'Horny Jim' is. Details on a postcard

COLLEGE NOTICE

Excessive Absence

Due to the excessive number of absences during the past year, it has become necessary to put the following new rules and procedures into operation immediately:-

1. Sickness

No excuse - the Department Heads will no longer accept your doctor's certificate as proof. We believe that if you are able to go to your doctor you are able to attend work.

2. Death (Your Own)

This will be accepted as an excuse. We should like to have two weeks notice however since we feel it is your duty to train someone else for your job.

3. Death (Other than your Own)

This is no excuse. There is nothing you can do for them and henceforth no time off will be allowed for funerals. However, incase this should cause some hardship to some employees, there are those who might care to note that on your behalf the company has a special scheme in conjunction with the Local Council for lunchtime burials, thus ensuring that no time is lost from the job.

4. Leave Of Absence For An Operation

We wish to discourage any thought you may have of needing an operation and henceforth no leave of absence will be granted for hospital visits. The management believes that as long as you are an employee here, you will need all of whatever you already have and should not consider any of it being removed. We engaged you for your particular job with all your parts, and having anything removed would mean that we would be getting less than we negotiated for.

5. Visit to Toilets

Far too much time is spent in this practice. In future the procedure will be that all personnel shall go in alphabetical order. For example, those with their surname beginning with the letter 'A' will go from 9.30 to 9.45am, 'B' will go from 9.45 to 10am etc.

Note

Those of you who are unable to attend at your appropriate time will have to wait until the next day when your turn comes round.

FOLK ARTISTS WANTED

Anyone who wants to play with the Folk Band who grace Stan's Bar every Saturday is advised to see Stan himself. Liquid refreshment in lieu of payment will be provided.

HANDBOOK EDITOR

Anybody willing to edit next year's ICU Handbook should get in touch with John White, IC Union Honorary Secretary, as soon as possible at the Union office

WANT TO WIN TWO TICKETS TO THE IC ENTS'

flamin' groovies

CONCERT,
IN THE GREAT HALL,
SAT. DEC. 8th

1. Which was the last 'Yes' album released in this country?
2. Who has played drums for Yes, King Crimson, and, more recently, Genesis?
3. What track takes up Side 2 of Pink Floyd's album *Meddle*?
4. Who left Pink Floyd after writing many of their early hits?
5. After the cancellation of the Flamin' Groovies Roundhouse gig last week, this will be their only London concert before returning to their home country. Where is this?

Answers should be addressed to Tim Fowler, c/o The Ents Office, IC Union, together with your own address. These should arrive no later than Wednesday 8th, December 1976) lunchtime. The winner will be chosen by Ents, whose decision is final and binding. The winner will be notified the following morning.

THEN JUST ANSWER THIS SIMPLE CONTEST & YOU COULD BE GOING FREE

Tickets for the Flamin' Groovies are available in advance from IC Ents in the Union Building, price £1.50 (IC advance £1.30)

FELIX SPORT

Rugby

Gutteridge hopes fade in last minute burst

It was an excellently struck 30-yard penalty kick, just on full-time, that finally robbed IC of victory in the second round cup-tie at Harlington.

Up until that moment the College side had looked much better than Guy's Hospital, and the crowd went away fully entertained by the afternoon's rugby but certainly bemused as to how Guy's had been able to snatch the game away.

After some good attacking play at both ends, the visitors scored first when a quick heel at a scrum enabled their winger to find room and dive over the line. IC gradually fought their way back into the game and hit a purple patch that lasted throughout the first half.

Their dominance at scrum, ruck and maul, the powering runs of Lipscombe and the splendid support work of Aspden, Turley and McLean meant that IC were continually going forward and exerting pressure on the Guy's half-backs.

Guy's break IC dominance

Cotter, kicked a penalty after a forward had handled at a ruck. A few minutes later Parkinson ran in a try close enough for Cotter to convert. At this stage IC threatened to run away with the game. However, on a quick attack the visitors were rewarded with a penalty when Waugh was adjudged to have struck too early for a ball in the scrum.

Then, towards half time,

Imperial C 19 v Guy's Hospital 20

Cotter kicked another 40 yard penalty to make the score 12-7.

From the restart IC kicked long and Forbes found touch just 10 yards out. The ball was won at the line-out and it went right along the three-quarters before Parkinson was tackled, just short of the line. From the scrum, Colledge harassed the fly half whose clearance was caught by Dunleary on the 25. He chipped across-field and Gregory beat the cover defence to the touchdown by a fingertip.

Guy's keep fighting

16-7 then, yet somehow Guy's continued to contest the game and fully deserved to score the try which they created by a quickly taken penalty midway through the half. The result seemed beyond doubt when Dunleary kicked a marvellous drop goal with only fifteen minutes to go.

Further pressure nearly produced another try for IC but, unfortunately Guy's broke quick out of defense, their backs burst through two tackles and their right winger sprinted up to the 10 yard line before cutting inside to score under the posts.

5 minutes to hang on

With the conversion a mere formality, IC had five minutes to hang onto a two point lead. Our luck ran out when the referee became very unhappy about the feed into a

scrum and he penalised the College to give the winning points to the Hospital.

So IC must wait another season to bring back the Gutteridge Cup, and the side is left to consider what might have been. It was a tremendous performance from a team greatly

trouble by injury and although in the end perhaps there was a lack of maturity, one hopes that the enthusiasm and commitment can be maintained. Team:- Cotter, Gregory, Gilbert, Forbes, Parkinson, Dunleary, Hobbs, McLean, Waugh, Pullan, Lipscombe, Aspden, Siomiac, Turley (capt) Porter.

Invasion gets mixed response

IC Water-polo team invaded the Malet St pool last Tuesday night to take part in the ULU Handicap Knockout Competition with an all-time record of three teams. At one stage it seemed as though the London Underground would not be able to cope with the IC contingency.

The Firsts....

Having finally settled down to play water-polo, IC 1, who started play against UCL with a five-goal deficit, gradually made up the goal difference. The teams were level at full time; IC won the penalty competition, but just failed to repeat the performance in the second round.

The Seconds....

IC2 were not quite so successful. They met and fell to a strong Guys 1 team, which contained some familiar faces. Nevertheless the IC team did have their moments. Sam made his own contribution to the game, and was sent out twice in a row. Then, to the delight of the crowd, he scored the

only goal for IC2. And Zein, in goal for the second half, produced a save that would have done justice to any goalkeeper on dry land.

....and the Thirds

The honours of the night, however, went to the IC Thirds. This team was composed of the club's new members (with one exception), many of whom were playing in their first match. But the handicapping did not reflect this, and IC 3 went in level. This did not perturb the team, who fought for every ball and came away having conceded a single goal. Again, there was some outstanding goalkeeping, this time from Brian Davies, and Jim Williams looked well at home in attack.

Teams:- 1st A Abdulla, J Bagnall, I Bales, I Forrest, F Hindlet, R Lewis D Lowther. 2nd Z Abdulla, C Dale, S Frost, S Madden, I Shott, S Taylor, Y Tamir. 3rd Barnforth, J Chase, M Cherry, M Clarke, B Davies, J Downes, A Estrada, M Lambert, J Warner, J Williams.

PRIZE X-WORD No. 4

1	2	3	4	5	6	7	8
9				10			
11			12	13		14	
		15					
16		17		18		19	
20	21			22	23		24
		25				26	
27				28		29	
30				31			
32							

Across

- Mass rape of short girl, and you can tell where they (2) all come from.
- A tree made a sharp ridge.
- Saint Fred (28) has gone on for actors.
- Boggy rawhide thong.
- Out
- As well as above.
- Lots of tales make salinity smaller.
- Partly insane, partly foolish.
- Joyous reply of frustrated inserter.
- An eccentric wheel make shinty stick backwards.
- Unaffected simplicity reversed affect on a wine.
- Community Community from from a, a hod hod.
- Dealer from labourer.
- A word of thanks.
- Same as 3 down. Wind instrument's literary connection.
- A bode made from sun dried tricks.
- Elbow in American con-trick backfiring.
- For example Christmas birth was a plus, but just the opposite.

Down

- Big fight before more mundane Chinese porcelain makes for hot loving.
- Canine skylight.
- See 29 across.
- Similar to a miner's brain.
- Similarly to Paisley, but of different ethnic origin.
- Final load
- The metal tag of a shoelace (old low voltage)
- Young cod, in where it comes from, and a day for attestation.
- Humanity and expert Denis.
- Fruit for a king or his opponent.
- Sum (Not 1 Hilax)
- Is up.
- A nodule or something more positive.
- What I did to get a word to fit here.
- Part of infoot (not instep)??
- Miner (cf 4)
- A note gone up. (Oh what a give away!)
- A tenth not warmed up?

by HILAX

A prize of £1 will be awarded to the person submitting the first correct answer drawn from the Editor's hat Thursday lunchtime

WHAT'S ON

Friday 3rd December

Club Activities

Orienteering Club: Lunchtime meeting. 12.40pm. Union Senior Common Room. Cheap lunch available.

IC Latin American Society 'Latin America Today' Speaker: Mr Hugh O'Shaughnessy (Financial Times) 6.30pm. Lecture Theatre A Sherfield Building. Swimming Club. 7-9pm. Swimming Pool. Learn to swim improve your swimming, and learn to play water polo.

Film

IC Filmsoc Present 'Death in Venice'. Mech Eng 220. 7.30pm.

Miscellaneous

Royal College of Art (Dept of General Studies) Lecture by John Carswell: 'A Passage to India'. 2.00pm. RCA Lecture Theatre. Overseas Students UCCF. Christmas Party. 5.30pm. Outside Mech Eng then tube to Tottenham Court Rd. Party fee, 50p return. Christmas meal, games, cards. Come and enjoy yourself.

Disco

IC Ents Disco. 8pm. Union Lower Refectory.

Gigs

QEC Christmas Ball. 8pm - 8am. Aitkins Buildings, QEC, Compton Hill, W8 (Tube: High St Ken) £7 double, £4 single. Featuring Mungo Jerry, the Pasadena Roof Orchestra, not Ware, Johnny Thunder and the Earthquakes and Disco (til 4am) and Films. Tickets from social sec, QEC Student Union. Enclues buffet and breakfast. Formal dress please.

Saturday 4th

Guilds: Year Rag Collections. 9.30am. C&G Union Office. Years to arrange their own stunts and let Dave Lord know as soon as possible what they intend to do and where they intend to do it.

Sunday 5th

Guilds Rugby 7's: 10.00. Union Arch.

Disco

QEC Disco. 8.00pm. Union Bar, Campden Hill Road, W8 20p. SU cards required.

Monday 6th

Swimming Club: 7-9pm. Swimming Pool. Learn to swim, play water polo or improve your swimming.

Miscellaneous

Lecture: The Modern Communist Parties' Approach to Socialist Democracy'. 7.30pm. ICWA Lounge. Speaker Jon Bloomfield. (National student Organiser of British Communist Party).

Tuesday 7th

Club Activities

IC Chemical Society present a Balloon debate. 5.30pm. Chemistry Theatre C. Members of staff supporting the 4 disciplines of chemistry (Organic, inorganic, physical and analytical) attempt to justify their existence in the plummeting balloon situation. Coffee and biscuits @ 5.15, cost 5p. Railway Society: Mr M Sharman will talk on 'Old Time Locomotives'. 5.40pm. Mech Eng 340. Wine Society, tasting. Beaujolais 5.45pm. Chem 231. Science Fiction Club: Tapss, talk and coffee. 6.30pm. Level 4 Physics. tape: 'Invasion of the Krell's'.

A discussion organised jointly by ICWA and Women in Science. 7pm. ICWA lounge. Kathryn Muller of the Rape Crisis Centre will give a talk followed by a discussion about the Centre. Sherry will be provided. Everyone is welcome. Jewish Society Outing: To Bloom's Restaurant. For Haute Koshier Cuisine and Celebrations. Meet 6.15pm. Mech Eng Foyer. Approx £3. Contact Charles Caller (Civ Eng 2 or 202 0642) by Thurs. 2nd Dec. To book your place.

Miscellaneous

Political Talk: A talk by Dr Keith Hampson MP on 'The Prospects for Higher Education' 12.45pm. Mech Eng 664. All welcome. Arranged by Conservative Society.

STOIC: Live transmission. 13.00. JCR Union Southside. Bruce Kempster (Daily Express) and Trevor Phillips (Vic Pres. NUS) on Student Politics. Chairman: Mike Williams. Those interested in taking part in the audience ring int. 2637. RCS Xmas Union Meeting: Chem L Th. A (Old wing) Slides, debate, Exec mandate. RSM Geophysical Soc Lecture 'Antarctica - Geophysical and Geological Research with the British Antarctic Survey' by RG Renner BAS. 5.30pm. Mining Geology Lecture Theatre (RSM 3.14)

Tea before at 5.00pm in Conference Room (esm 3.10) Guilds General Committee Meeting: 5.30 for 6.00pm. Union SCR. Hall Dinner: 7 for 7.30pm. Sherfield Building. £2.55. All applications to PAT by noon today.

Wednesday 8th

Club Activities

IC Folk Club present a Ceilidh with Puddleduck 8.00pm. Union Lower Refectory. Members 40p, Non members 60p. It's a sort of Barn Dance, with an excellent band and a caller to tell you how to dance. It's also great fun!

Theatre

Dramsoc production of 'The Flies' by Jean-Paul Satre. 7.30pm Union Concert Hall. 40p (students) 60p others.

Film

QEC Film Society. 7.00pm. Queen Elizabeth College, Campden Hill W8. 25p. SU cards required.

Thursday 9th

Club Activities

Model Aircraft Club. meeting. 1.00pm. Southside Upper Lounge Art Club. 7-9pm. Biology Common Room - under union archway. Painting materials Required. IC Darts Club - absolutely your last chance to enter the Whitebread Doubles Cup competition. 30p non-members 10p members. Entries to Union Bar staff.

Film

UC Ents Film. 'Canterbury Tales'. 6.30pm. Mech Eng 220. 15p. A 'classic' comedy based on Chaucer's Canterbury Tales. Winner of the Golden Bear award at the 1972 Berlin Festival.

Miscellaneous

STOIC Lunchbreak 13.00. JCR, Union, Southside, Rounding up the more unusual aspects of IC. Carol Service of West London Chaplincy. 5.30pm. Holy Trinity, Prince Consort Rd. With RCM Orchestra. STOIC. Repeat of this afternoon's 'Lunchbreak'. 6.00. Southside, Union.

Dear Mickey....

The Head of one of the country's bigger educational institutions, a man on £14,000 a year, calculated the other day that he might be better off out of work.

The sum, he admits, is fairly rough and ready, and there are no doubt complicated administrative provisions tucked away in the small print which would thwart his plan. But it works roughly like this. He has three children. Now suppose his wife and the children all go to university. And suppose he gives up his job and goes to university. His wife and children would grants of £675 each - assuming they lived at home. He, as a mature student, could perhaps expect grants totalling £2,165. Add it all together - and it comes to £4,865, and over the thirty-week university year, that works out a £650 a month. At the moment, after tax and superannuation he gets £620 a month. All he had to do, he reckoned, was count in the cost of having to buy business suits and travelling to work - and he would be better off at the head of a family of students.

STUDENT WANTED

Wanted Urgently - male or female student to take charge of 3 boys aged 7,10, and 12 years of age during Xmas Vacation from: December 20 - 24, January 3 - 10th (incl.) No cooking involved, live in or out. Please contact Mrs Nichols at 229 7469 daytime 584 2885 evenings Address: 169 Queensgate, London SW7. (right next to College)

The winner of X-word no. 3 in FELIX no 434 was DAVID BALES of Mech Eng 2.

Ceilidh

Presented by IC FOLK CLUB

featuring

PUDDLEDUCK

Wednesday
December 8th
at 8.00 pm

Union Lower Refectory

Folk Club members 40p Non-members 60p

TO ALL CLUBS

Anyone organising a social event or meeting within College is requested (by Union Council) to let Jen Hardy-Smith, the President's Assistant (internal 3915), have all the details. These will then be recorded in an Events book so that events of a similar nature do not, hopefully, clash. Union Council particularly urges Union clubs and societies to record their events and committee meetings in this book. Just phone Jen or drop into the Union Office.

FELIX SPORT

Soccer

IC contain airborne medics

IC 1st XI 1 v London Hospital 1st XI 1

London Hospital, fielding half a dozen strapping six footers, proved stiff opposition for this lightweight but tenacious IC side.

The medics arrived at Harlington with a well earned reputation of being one of the more robust and effective college sides in London. So it was with some apprehension but a large measure of resolve that our lads went out onto the field.

IC - notoriously slow starters - weathered the early storm where London exploited their aerial superiority with a series of high curling crosses into the box. But for the bravery of Brabbin and the effective love of Huntingdon IC may well not have survived this early onslaught.

Survive it they did however, and slowly gathering composure, began with some deft interchanges to set up their own

attacks. A brief skirmish on the edge of the London area involving Bates and Baker saw the older man, with typical nonchalance, slot the ball in the net. An unexpected wind-fall for a hitherto bewildered IC side.

The second half saw the game develop into a fast exciting struggle for dominance, with IC growing in stature with every minute. In midfield the blond, elegant captain of IC, Grimwade, contended the rights with all the verve and mastery of an accomplished star. Add to this the dogged determination of his midfield support and the persistence of Lindon and Frampton up front and it is not difficult to see why IC - in terms of team work at least - emerged slightly the better side.

In terms of goals however, London Hospital came off winners in the 2nd half with

an inevitable header. A lapse on the part of the IC defense was punished severely almost clinically, with a remarkable example of how to head the ball. And so the game ended in a stalemate.

The game proved to be an interesting forerunner for the forthcoming cup clash between the two clubs on Saturday, IC at least can draw some small comfort from the encounter. The forte of their opponents lies, so to speak, in the air. If IC can stifle this undoubted talent then they will be half way to regaining the coveted trophy which, incidentally, was last in our possession during the halcyon days of Smith & Co, in '72-'73.

Team:- K Allen, C Howley, I Huntingdon, D Brabbin, R Young, T Grimwade, S Bates, A Baker, L Lindon, P Frampton, S Gee.

Gliding

Flying start

The Gliding Club has had a very successful term so far, with about 20 new members progressing with their training, some of them nearing solo standard. For these people we will be organising a course during the Christmas vacation, which weather permitting, will produce the first crop of solo pilots for this session.

A group of ex-student members of the club have just been on a very successful trip to Scotland, one of them climbing to over 20,000 feet in lee-waves off the Scottish mountains.

We have at last taken delivery of our new high performance glass-fibre glider and work is progressing rapidly to get it flying as soon as possible.

If anybody wants to join or simply to find out more about the club, please come along to one of our meetings in Aero 254 any Thursday at about 5.30pm.

RTM

Hockey

Injury spoils good performance

IC 2 v Bank of England 2

The game started quite well for IC, who managed to absorb the pressure that Bank put on them without conceding a goal. On the offensive they produced some good moves and were unlucky not to score off some of them.

Late in the first half IC did manage to take the lead when captain Bob Middleton knocked a cross from emeritus captain Dave Balderson into the back of the net.

Until half-way through the second-half IC looked like increasing their lead. Then tragedy struck when IC sweeper Malcolm Callun was injured and had to leave the field.

The ensuing confusion in the defence allowed the Bank to score twice. IC sorted themselves out and produced a hard fight back in the attempt to equalise. The energy the team put in during this period was rewarded when Dave Balderson scored after an excellent move down the right wing. This provided a fitting end to a hard fought, even and enjoyable match.

Team:- R Hutson, M Callun, R Vaz, J Huckle, C Smith, C Parker, A McRobie, T Sethi, R Middleton, D Balderson, Umpire A Creek.

JOHN HUCKLE

Rugby

Extras overcome daunting Cornish

IC Extra 1st 9 v London Cornish 2nd 3

IC were not looking forward to this game as, they had arrived with a team which was two men short and were left with a daunting task. There was little time for reflection and soon everyone had their work cut out (especially the six-man pack who began to show superior skill and managed to contain the Cornish pack.)

IC held back the Cornish attacks with some great covering and started to look dangerous themselves when the backs received possession. A1- though the IC pack won a fair share of ball from line-outs and loose-rucks, it needed all the team's energy and determination to defend well against the continuous Cornish pressure, which mainly came from set scrums where their two man advantage was most telling.

Eventually the Cornish scored from a penalty kick, given for an infringement in a ruck. Showing great resilience, IC went straight back at Cornish who proceeded to give away a penalty, which was duly put over by Pat Dunleavy to make it 3-3 at half-time.

Although IC were beginning to feel the pace they nevertheless took play into Cornish's half for long periods in the second-half. After a little difference of opinion with an IC player one of Cornish's forwards was sent off. This

gave IC added impetus and after staying in Cornish's 25-line for a long spell they were rewarded with a try by Ronnie Howard, who crashed through a crowd of defenders to put the ball over the line. Pat Dunleavy converted to make it 9-3 for IC.

Cornish came back in a last effort to salvage something but it was too late and they still could not penetrate IC's defence. The score remained 9-3 at full-time.

This was a really fine performance by the whole team but particularly the forwards who played as though there was no tomorrow and provided the backs with a chance to run with the ball. They often threatened to break through and were unlucky not to score a couple more times.

Team:- Jenner, Rust, Mill, Gibson, Pettit, Dunleavy, Howard, Oyley, Fishburn, Downing, Foley, Willshire, Scott.

MIKE GIBSON
(Captain)

NIGHTLINE 581-2468

INTERNAL 2468

6pm - 9am Every Day

Someone to talk to...

...and information

Tenpin Bowling

IC take off in airport competition

The College 'A' Team came third in the 2nd round of the Airport Bowl's Inter-League Tournament last Saturday. The competition included teams from Brunel University, Avis Truck Hire, Horlicks, and British Airways. This put the team 4th out of the 36 teams entering, therefore, we will go into the final on the 4th December.

Simon Spurrier and Paul Bartlett rolled 495 and 494 respectively; and were well supported by Graham Hillman and Effendi A-Rahman. Simon only just failed to gain 'National 200' recognition with 199!

Earlier in the day hangers on from the Guild's Carnival were noticeable during a match against Southampton University. The 2nds & 3rds each took a game from Southampton, but the 1sts were narrowly beaten when the Captain hit only 5 pins in the last frame to leave the score at 621 against 622.

The Ladies, with a depleted side, tried hard against overwhelming odds. More Ladies would help the club to be more competitive in future matches.

Anyone interested in Bowling should contact the Secretary via the Union.)
SIMON SPURRIER
(Captain)

Discrimination rules OK

Proposals for devastating increases in tuition fees for 1977 were announced by Mrs Shirley Williams, Education Secretary, in the Commons last Thursday (25 Nov). The new proposals modify those made last July by Fred Mulley, benefiting some home students but adding to the fees of overseas students.

Originally the DES advocated increases in fees from £182-£650 for university first degrees and £416-£750 for postgraduates. However Mrs Williams said she had been persuaded this would cause 'excessive difficulties' for universities and colleges and self supporting students - therefore the fees for home students would be £500.

But she saw no necessity in reducing fees for overseas undergraduates particularly bearing in mind the fall in the pound. All postgraduates are subject to massive increases - £750 for home and £850 for overseas students. Some

of the worst hit will be the two thousand home postgraduates who are self-supporting.

Fears are growing that these increases will result in closures both of university research departments and further education colleges, because of falling student numbers. By increasing fees the Government may well be denying the possibility of further education of financially poorer students. Alongside the recent proposals drawn up for closures of further education colleges it would appear that the Labour Government has (temporarily at least) abandoned its socialist principles of freely available education.

Even before the increases were announced, Governors of several London Colleges, including Bedford and Queen Mary had written to Mrs Williams opposing any increases, and in his annual speech to the Union Council, the Rector, Sir Brian Flowers also deplored the proposals.

STUDENT WORLD

EDITED BY ANDREW EVANS

Dads Default

73% of university and college students do not have their grants fully made up by their parents, according to DES figures, published this month. Students are forced to rely on vacation earnings, averaging £167 pa, and even this does not cover the £250 deficit of some students. Mr Oakes, Minister of Education expressed concern.

NUS has been making claims for some years now, and the Government announcement comes less than a year after the shift by Stella Greenall - former head of the NUS' Education and Welfare dept - from NUS to the DES.

ULU accuses IC and UC

Imperial College and University College are being asked by ULU to disinvest from South Africa in a joint campaign with Oxford and Cambridge Unions. Wye College, Queen Mary College, and Bedford College are already selling their investments: UCL's is estimated to be £½ m. (THES)

Ms - Understanding

A hard-up ex-teacher who wanted a few hours work each day recently and innocently put a postcard in the window of a little tobacconist's in South Kensington: "Ex-teacher seeks part-time work. Phone Diane..."

She had more than thirty replies...all of them men wanting a price.

Middlesex Militance

Students at Middlesex and Teesside Polys are fighting for their foreign quarter. They are currently occupying administrative blocks. This happened after a Ceylonese student, applying for a fourth year, was asked by the Home office for details of his bank statement, and for a receipt for college fees paid. Meanwhile his passport was withheld.

A departmental head has also been asked to report on the work of two Indian students on his course.

At Teesside 55 overseas students are threatened with deportation for non-payment of fees.

Middlesex Strikes

Students at Middlesex Poly are joining the 500 administrative staff (members of NALGO) in their strikes against the college's plans to fill fewer than 50% of the non-teaching posts that fall vacant. (THES)

Tory Bloc At NUS

When the NUS Conference convenes at Blackpool next month, the Federation of Conservative Students will control the delegations from Birmingham, Hull, Nottingham, Edinburgh and Southampton Universities and Leeds Poly; and they will be the largest district political group in the Bristol, Liverpool, Newcastle, Reading and UCL delegations. (THES)

£100,000 less for Rents

£100,000 is being withheld by Loughborough students in the biggest UK rent strike on record. 850 students have put their residence fees into a fund set up by a rent strike committee.

Students want hall fees reduced so that they are in the same proportion to the grant as they were last year. That means reducing the £170 for full board and lodging to £158 a term with a similar reduction for self-catering students. The Committee is also demanding more student involvement in the formulation of residence fees.

The rent strike was escalated four weeks ago when the University authorities persuaded people to pay their greatly inflated hall fees as they collected their grant checks, before receiving their bills. A mass meeting of University residents was called and over 300 people voted overwhelmingly to go on a rent strike and to set up a 'rent fund'. A Union General Meeting voted unanimously to support the residents decision, indicating that the Colleges in Loughborough also support the University rent strike.



"THEY SAY SHE'S A FOREIGN STUDENT TRYING TO PAY HER TUITION FEES!"

AIRBORNE

IC Radio conducted its first test transmissions at Southside last weekend. Station Manager John Allen said that the transmission, of a test tone, provided encouraging results and that the station hoped to be fully operational by July.

Then (as now) it will be on 312 metres (962 KH2) in

the medium wave band. This frequency was allocated by the Home Office in March, when the station received a 'test and development' license following two years of negotiations between College and the Home Office. The College has agreed to pay the estimated £3,000 to set up the station.

