



FOUNDED IN 1949

# Felix

NEWSPAPER OF IMPERIAL COLLEGE UNION

FELIX is published by the Editorial Board on behalf of the Imperial College Union Publications Board. Copyright is reserved.

No. 409

Friday 30th January, 1976

FREE!

## Linstead Hall to get new extension

# £350,000 windfall

£350,000 HAS been received by the College from a benefactor wishing to remain anonymous, it was revealed at the Union General Meeting yesterday. Mr Peter Teague, ICU President, announcing this, said the donation was for the purpose of providing an extension to Linstead Hall.

The announcement was followed by a sustained round of applause in appreciation of this splendid gift.

The donation comes from the same source that provided

a similar sum of money in 1963 for the building of Linstead Hall itself. The new extension will accommodate approximately 70 students.

## Student strike impracticable

At the UGM on Thursday, there were two main bouts of excitement, one when ICU President, Peter Teague announced the £350,000 windfall, and the other when RSMU President, Nick Bradshaw put a motion to the meeting to proclaim City and Guilds Union a sub-committee of Mines Union.

### Strike

The news of the extension to Linstead Hall came near the start of the meeting, when Correspondence received was read out. After this, in the President's Business; Mr Teague received support from the meeting to make overtures to the trade Unions concerning the Student Strike and Demonstration on 27th February. Mr Teague stated that it was impracticable to attempt to close the College without the full support of the Unions on campus. Whatever the outcome of these talks, he still urged as many students as possible to go on the demonstration and work under the IC banner which was recently returned to the Union.

Several motions, including those to be put into the next NUS national conference were debated and eventually carried.

### Lively debate

A lively debate was, however, precipitated by the motion that full-time members of the NUS executive should

be paid a net salary equivalent to the Postgraduate grant with usual DES allowances for dependents. At present London-based full time members of the NUS executive receive £3200 per year. The motion was passed overwhelmingly, the general feeling being that NUS executive members should have a similar standard of living to that of the ordinary student or postgraduate.

Another motion again passed overwhelmingly, was that on central representation of Collegiate universities. Fearing that the system would be extended to London, the meeting rejected the NUS executives decision that the Collegiate Universities of Oxford and Cambridge should be centrally represented.

### Disband C&G

Two other motions were passed, re-affirming ICU's policy on the National Secret Ballot for executive members and on Overseas Students.

Mr Brayshaw then introduced his motion to disband City and Guilds Union, the motion was stopped after Mr Steve Hoyle, President C&GU, had successfully challenged the quorum. The highest total for attendance this academic year was recorded at 230.

### STOP PRESS

The Wallisoc lecture advertised for Monday has been cancelled.

## Endsleigh turn over new leaf

IN RESPONSE to criticism over the last 12 months, Endsleigh, the Insurance company of NUS, are launching a new motor insurance plan called Student plan 6.

Student plan 6, together with Gradplan 6, form a new, original type of motor insurance policy, which an Endsleigh spokesman described as "revolutionary." Essentially, the policy covers six months instead of 12.

In many cases, the cost of two consecutive six month policies, will actually be less than a similar twelve month policy. As stated to the NUS conference at Scarborough, Endsleigh made a loss of approximately £10,000 last year. Following this, a drastic re-appraisal of company was made, and the new policy devised. Realising that administration was a large element of cost in the labour-intensive insurance industry, they streamlined their system: reducing the number of regions in the UK to two; Glasgow London, and the rest of the country. They have also reduced the number of categories of motor vehicles. Endsleigh have published a leaflet of their charges, enabling students to calculate their own premiums - this is unheard of for an insurance company. The leaflet is available from any Endsleigh office.

The new system will have no no-claims bonus, but a "guaranteed bonus", which cannot be lost if the policyholder has an accident. The bonus depends on the experience of the driver. If he has an accident, the premium will be increased under a system of surcharges, depending upon where the driver has the accident (higher surcharges for London and Glasgow, not where the vehicle is kept.

The six month policy is run by Endsleigh in conjunction with Federation Mutual Insurance Limited, a reputable, forward-looking company.

Endsleigh, as insurance brokers, issue approximately 160 thousand policies per year. Of these, about 40 thousand are motor car policies. However, the car policies make up 45% of the total income of Endsleigh. The increase in petrol charges and road fund tax has resulted in 25% to 30% of student motorists selling their cars or suspending their policies over the past year. Enthusiastic employees are hoping that this new scheme, which they believe to be extremely competitive, will encourage students back onto the road, if only for six months in the summer.

Endsleigh intend to continue with their 12 months Sun-Alliance scheme, thus giving a choice to car owners. As with all Endsleigh policies, the holder has to be a full-time, part-time or post graduate student.

Rejoicing at the opportunity to launch an original idea, the Endsleigh staff treated themselves to a press-conference at the Waldorf and a later, lower key affair for the Student Press at ULU Malet St.

## Activities in Hillel House

1/2 Endsleigh Street

Tel: 01-388 081

Sun Feb 1st: Film "Cabaret" 25p with student card 8.00pm.

Mon Feb 2nd: "The Scope for Reform in Judaism" with Rabbi J Magonet and Rabbi J Rosen. 8.00pm.

Tues Feb 3rd: "Jewish Mysticism" 8.00pm.

# Wotzon

**Friday 30th Jan**

QEC: MICKEY JUPP BAND & STEELER in the Courtauld Hall at 8.00pm Adm 60pm adv, 75p door.

**Saturday 31st**

IC Ents present RENAISSANCE in the Great Hall at 8.00pm, Support Bob Pegg Adm IC adv 90p, adv £1.00, on the door £1.20.

**Sunday 1st Feb**

IC Catholic Society: A talk by Tim Firth on *Why be a Catholic, not just a Christian?* 7.30pm.

**Monday 2nd**

Wellsoc Lecture: PROF I ROXBURGH (QMC) on *Will the Sun explode?* (an illustrated lecture). 7.30pm ME220.

**Tuesday 3rd**

Associated Studies: A Plain Man's Guide to Architecture - 3. Renaissance and Baroque Architecture by LANCE GRIBBIN, V&A. Theatre A, Sheffield Building 1.30pm

THE WESTERN WAY TO GOD by The Rev MICHAEL HOLLINGS, Parish Priest of St Anselm, Southall. Theatre B, Sheffield Building 1.30pm

HALL DINNER in the Sheffield Building 7.00 for 7.30pm. See Pat in the Union office by

12.00 noon on the previous Friday.

IC Conservative Society invite you to hear DR KEITH HAMPSON, Conservative spokesman on Higher Education. 12.45pm Mech Eng 664.

**Wednesday 4th**

IC Folk Club presents PETE & CHRIS COE, Union Lower Refectory. 8.00pm Adm members 30p, non-members 50p.

**Thursday 5th**

Associated Studies: Film - The Space Between Words - 2. School. Theatre A, Sheffield Building 1.30pm.

Lunch-hour Concert. The Library, 53 Prince's Gate.

All God's Children: God in All Religions? The Rev GEORGE APPLETON. ME220 1.30pm

IC Ents Film: LIVE & LET DIE in ME 220 at 6.15pm. Adm 10p.

**Friday 6th**

QEC Ents present COCKY in the New Common Room Bar. 8.00pm. Adm FREE.

Would all drivers who are no longer using their Parking Permits regularly please contact John Downs IC Union Office? URGENT.

## FELIX Classified Advertisements

ANY IC STUDENT who places a FAIR COPY of an advertisement in the FELIX office by the time stipulated (ie COPY DATE) will have it printed for the sum of ZERO PENCE, provided it is not too long and makes sense.

### The Whitebread Cup

The draw has been made and is in the Union Bar along with the rules. The closing dates for the first and second rounds are Monday 2nd February and Wednesday 11th February respectively. The finals will be on TUESDAY 17TH FEBRUARY.

Matches may be arranged by notices in the Bar, so all entrants should check there.

Mike Gibson  
Darts Club President.



## COMPETITIONS

### PHOTOGRAPHIC

Prints or Slides  
B/W or Colour  
Aviation Subjects  
Only  
10p per entry

### MODEL AIRCRAFT

Plastic scale Models  
Any Standard Scale  
25p For 1st Entry  
20p For 2nd Entry  
15p Each Thereafter.

For  
Rules and Details  
Contact

Nigel Williams  
(Aero 2)

Adrian Jones  
(Aero 2)

Last Date For Entries: March 12th  
Open to everyone in College.

## Women's Studies Course

THIS IS a series of talks arranged by some of the women in college because we felt a need to examine the reason for women's present position in our society. The intention is to look at the present and past situation of women, to see how it affects us, and possibly to suggest what we can do about it - although this is not our main aim.

The meetings take the form of a talk given by one individual who has made a special study of the subject. We do not pretend to be experts, we just want to share our interests with others.

We shall be examining women and work, women in education, in the family, in science and technology, and in the church. We shall also look at the historical aspects of her role and society, and her role in other societies. A full course outline was given in FELIX No. 407.

The series started off with

a talk by Dot Griffiths on Socialisation and Male and Female Roles, on Wednesday January 21st. In this interesting talk she outlined experimental biological differences, emphasising the tenuous assumptions and experimental techniques on which they are based. She argued convincingly that the apparent differences are based on social upbringing not on the actual sex of the child, supporting this with examples: one such as the case of children miscategorized as male or female at birth, whose whole behavioural pattern changed on being reclassified. As a result of this talk, a lively discussion ensued; we all thought that the talk had been useful to us, and looked forward to the next one.

The talks are open to everyone to attend, they take place on Wednesday lunchtimes at 12.30 in the ICWA lounge. We hope to see you there.

Fiona McGregor, Physics I.

## Skiing

ALEXANDRIA PALACE

MEET at the slope  
at 7.00pm Mon 9th Feb.  
and fortnightly

AVIEMORE

WEEKEND March 13th & 14th  
Travel up on Friday 12th March  
Details: Next FELIX or Ski-  
Notice Board (Union Entrance  
Hall).

## PRESIDENTS BALL

featuring  
MOON & SPARROW  
plus

Buffet and Disco  
Late Bar 1.00am  
Saturday 14th Feb.  
at

Chelsea College,  
Main Hall, College House.  
Tickets £1.00 from  
the Students Union  
Tel: 352 6421 ext 109.

## IC PAKISTAN SOCIETY

presents

A MUSICAL VARIETY PROGRAMME  
featuring

MOHAMED KASSAM AND PARTY  
including several well known BBC TV artists.

SATURDAY 7th FEBRUARY 1976  
in the Great Hall

TICKETS 75p and £1.00

## IC CATHOLIC SOCIETY

7.30pm Sunday 1st Feb.  
A talk by TIM FIRTH  
on

*Why be a Catholic,  
not just a Christian?*

## ROOM AVAILABLE

A single room in a shared flat in Ladbrooke Grove is available. Rent is £9 a week exclusive. Phone David Rosen on Internal 4463 or 01-960 0142 in the evenings.

## West London Chaplaincy

## CONTACT

SUNDAY 1st FEBRUARY  
10.00am Sung Eucharist in the Consort Gallery, Sheffield Building.

TUESDAY 3rd FEBRUARY  
1.30pm 'The Western Way to God'. A General Studies Lecture by Michael Hollings in Theatre B, Sheffield Building.  
7.30pm Folk Night in the Union Lower Refectory.

WEDNESDAY 4th FEBRUARY  
7.30pm Workshop on "Our Christianity" (002 Sheffield)

THURSDAY 5th FEBRUARY  
1.30pm 'All God's Children? God in all Religions'. A

General Studies Lecture by Archbishop George Appleton in Mechanical Engineering Theate 220.

7.30pm United Chaplaincies Workshop and Conviviality in the Union Lower Refectory.

SUNDAY 8th FEBRUARY  
10.00am Sung Eucharist in the Consort Gallery, Sheffield Building.

6.00pm Mass at More House, Catholic Chaplaincy. (53 Cromwell Road).

7.30pm 'Mental Sickness'. Talk and discussion by Louise Martheau.

# Peter Patter

## Students and Supplementary Benefit

As many of you will be aware students are at the present time able to claim supplementary Benefit from the local Department of Health and Social Security during the vacations. Many students rely on this, especially those with flats who can have their vacation rent paid for them. I want to emphasise for all those students who do not claim this benefit that it is a right which you are all entitled. How much longer this right will remain is a matter of conjecture. Rumours have been rife for sometime now that this provision will be stopped. Recent statements point to the fact that it is now more imminent than before.

Why should students receive this supplementary benefit? Under the present grant conditions where a student is paid only for 30 weeks of the year at the full rate, and receives about £70 to cover the 22 weeks of vacation, students simply cannot survive without extra income during those vacations. Now, I am not against students working during the vacations, as this can provide useful experience. It is not possible however, to work every week of all the vacations. I also feel that students should not be separated off from the rest of the community and if they are unemployed then they should be treated in the same way as anyone else would be.

I would therefore adopt the attitude that a student should either be paid for 52 weeks

of the year, or should be subject to the same rules as everyone else, that is, if they are unable to get a job they should receive some support from the state. I hope that you agree.

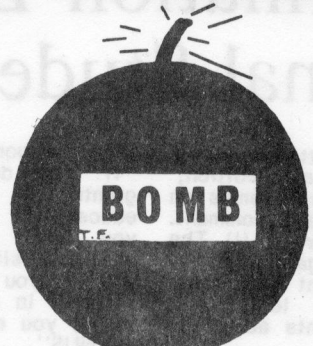
### Who wants a higher grant?

The answer to that question is probably that most students want a higher grant. The NUS grants campaign has three main fronts. Firstly, that the parental contribution should be abolished because students should be independent at eighteen as is everyone else, and also it is the only way to ensure that every student receives the full grant to which they are entitled. Secondly, that those awards which local authorities make at their discretion at present, should be mandatory so that any student who is accepted for a course automatically receives financial support. Finally, the NUS are campaigning for an increase in the level of the grant of about 33%. This increase seems massive, but is necessary to give students the same purchasing power they had in 1962. The grant level would be over £1,000 a year if this increase were accepted by the DES. To put this into perspective the residence charges at Westfield College are £620 full board.

I hope you will all agree that although we should be grateful for what grant we get, in a time of high inflation large annual increases are

IMPERIAL COLLEGE  
OPERATIC SOCIETY  
PRESENTS

# UTOPIA LIMITED



60p **BOMB** 80p

BY  
**GILBERT & SULLIVAN**  
TICKETS: FOYÉE OF SHERFIELD  
BDG. OR UNION 12:30-1:30 DAILY

TIME: FEB. 7.30 PM  
TUES. 10<sup>TH</sup>-14<sup>TH</sup> SAT.  
IN THE UNION CONCERT HALL

necessary just to keep in pace. As a major event of the Grants Campaign, the National Union have called for a one day student strike and National Demonstration on Friday 27th February. I do not agree

with students going on strike if it means missing lectures but I would urge you all to support the demonstration if you can. Further details in FELIX nearer the day. **Pete**

# Mutters Arising

THE BARD of the felt tip returns or as Captain Todd was heard to mutter from the flight deck, "I came, I soared, I Concorde" (nause rating - approx the speed of sound). Today's juicy offerings include:-

1. **Southside shop.** If you wander part or through this wonderland of goodies you should notice a few changes in the near future. Firstly a suggestions book should be available. I can do little more than implore you to use it. Also bacon and Fresh Fruit should be stocked. Any comments on this topic will be welcomed.

2. **Elections.** - Gasp!! Unless you've been either completely ratted, or deaf and dumb for some time, you may have perceived the initial symptoms of election fever. Well may I say that I'm still here, and I don't

If you are interested in any of the above posts, collar the present holder of the job and find out what is all about. I should add that anyone wanting intend getting out of my office for anyone - yet. However, the elections for next years

Council will soon be upon us. So take your diary in the left hand, and read on:

- 1) Dep. Rep. Elections:  
Papers up 29th Jan.  
Papers down 9th Feb  
Elections: 19th Feb.
- 2) Sabbaticals & Dep. Pres:  
Papers up 9th Feb.  
Papers down 20th Feb.  
Elections: 1st, 2nd March.

**HUSTINGS - 26th February**  
**RESULTS - 4th March:**

- 3) Union Officers:  
Papers up 19th Feb.  
Papers down 1st March.  
Elections: UGM on 4th March.
- my job needs (a) a certificate of insanity, (b) a lovable personality, coupled with charm, good looks, and humility, and (c) a sten gun.

Just in case, you're still thinking of standing, here follows a very brief rundown of what the Union Officers can be expected to get up to; although, of course, what you see as the job, may be better.

a) Academic Affairs Officer:  
Co-ordination of the various academic affairs sub-committees, and staff-student committees within College. Sits

on Board of Studies. Keeps under permanent review the purpose and structure of the degree system and its means of

assessment. Production and Distribution of Alternative Prospectus. Present Officer: Rick Parker, Physics PG.

b) Student Residence Officer:  
Deal with all matters relating to accommodation, both in and out of College. Sits on College Residence Committee. Present Officer: Dave Rawnsley, Physics 3.

c) Carnival Co-ordinator:  
Organises the total rag effort, Rag Week, the selection of charities, dealings with the police etc. Present Officer John Kearns, Chem. Eng. PG.

d) Community Action Group Chairman:  
Organises Community Services, eg playgroups, soup-runs, jumble collections, etc. Present Officer: Ian Jowett, Physics 3.

e) External Affairs Officer:  
To Liaise with ULU, NUS, London Students Organisation, local community groups, etc, and ensure that our views are heard, on all matters external to the college, but which

affect the students. Present Officer: Derrick Everett, Physics 2.

f) Chairman of the Overseas Students Committee:

To assist Overseas Students in problems encountered in this country, welcomes Overseas Students at start of session, sits on College Overseas Students Committee. Present Officer: Vacant.

g) Junior Treasurer:  
Helps the Senior Treasurer in overlooking all Union Financial matters. Present Officer: John Shemilt, Met. PG.

h) Welfare Officer:  
Oversees all matters relating to Welfare, Legal, Financial, and Health Problems - pretty well everything! Present Officer: Sue Kalcinski, Chem Eng. PG.

There will be posts for ordinary members of numerous committees, coming up soon, as well as the glamorous tasks of Student Record Buyer and Student Book Buyer. If you're curious about either of those jobs, see me.

Right then luv to everyone, including Spanner and Thes (wherever you are). **Jehn**

# Letters to the Editor

## Disaffiliation Debate-An Apolitical National Student Organisation

Sir, - Mary Attenborough's letter in your ast edition, revolved about two themes on which I would like to comment. Her two points were, (i) The need for an organisation to represent Student interests on a national level; (ii) Concern of students about the world situation.

Considering the need for a national student organisation, when she says "If you want to change anything at all, though, you must see the need for a student organisation. It would be impossible to even decide on the grants claim...without some sort of national co-ordination". She makes a very valid point.

There is a need for an organisation to represent STUDENT INTERESTS at a national level. What is important is the definition of student interests. In which areas should a student organisation express its views on our behalf, and in which areas should its jurisdiction be curtailed?

Ms Attenborough claims that "If you don't want higher grants, if you don't mind educational cutbacks, if you don't care about the economic situation in Britain, and if you don't care what happens in other parts of the world, you may as well leave the NUS".

The first two topics she lists I believe are in the domain of a national student organisation, whereas the latter two are well beyond its bounds. A student organisation should look after our interests as students, we elect MPs to look after our interests in the field of politics.

In fact, the whole controversy is about the POLITICAL VIEWS and POLICIES expressed by the NUS and NOT their activities in other fields. Ms Attenborough states rightly that "You cannot stop people from wanting to consider and express views about any issue they feel to

Students, who have found, especially since the latest Rent Act made landlords more fussy as to their tenants, this reputation a mill stone be important", but you CAN stop them expressing their views in the name of an organisation by making it plain that the views are purely the personal opinions of the individual who makes them.

A national student organisation which is, by its constitution, unable to hold political views, would be a solution to this problem.

Ms Attenborough assumes in her letter that there can be only one union, the NUS, representing students nationally. Why shouldn't colleges disaffiliate from the NUS and form their own National Union? - An apolitical national union.

An apolitical union would be in the student interest, since it is the political views of the NUS executive which has done much, in recent years, to tarnish the reputation of

around their necks whilst looking for accommodation. To say nothing of no longer having to finance joy-rides to Bucharest for conference delegates.

There are two ways of getting an apolitical student organisation. One is by amending the NUS constitution, which would prove difficult because of the large number of "politicians" in influential places there; the other is by disaffiliating from the NUS and setting up another apolitical national organisation along with Aston and any others which may decide to disaffiliate. The new national union could provide all the facilities now provided by NUS. In the event of the new organisation failing we could always rejoin the NUS.

Yours faithfully,  
JIM DANIELS  
Physics 2.

## Disgust

Sir, - It was with great disgust that I read your front page article entitled "Wonderland Mascotry" in the last edition of FELIX (No 408). I refer to of course, the numerous factual errors contained within it.

The idea was infact not mine as was stated! I was approached as to the possibility of a swap and subsequently as requested informed Steve Brightman (RCSU President) and asked for his comments. Meanwhile Steve Hoyle (C&GU President) was also informed and both presidents were given four days to think it over. As you can see it was not just implemented but careful consideration was given to the STUNT before we went ahead, the opposite was implied by 'your' article.

Eventually both sides agreed leaving Richard Gundersen (not Gunnersby and not a Spanner Bearer) to finalise details of the swap. We eventually met at 1.01 (46 minutes late of the original 12.15 deadline) as both had slight mishaps.

I also find that certain parts of the 'TITBITS' article need commenting upon. I am quite sure that the reference to Chalkie White (RCSU VP) were most embarrassing to him, as he is 'in charge' of RCSU

mascotry but the Theta Bearers are responsible for Theta!

Yours sincerely,  
DAVE DODGE  
RCSU Theta Bearer.

## Delight

Sir, - I am delighted to see the reappearance of the 'TITBITS' column this term. It will I am sure provide some stimulus for interesting reaction and lively debate.

I note that the authors express a desire for anonymity 'per se' the furtherance of 'journalistic mobility'. However if one, is prepared to express opinions publicly then one must be prepared to accept any criticism arising from them. Therefore I ask you to urge the authors of 'TITBITS' to reveal their identities.

Yours faithfully,  
CG MILLER  
Physics 1.

(THIS LETTER stimulated reaction and lively debate amongst the Editorial Board at the meeting last Monday. The outcome was sympathy with Mr Miller's point, and his view was appreciated. Nevertheless, we must, as yet, keep the identity of Titbits columnist under the Editor's Hat. Any criticisms, or praise, arising from the column will be accepted by the Editorial Board, whose

## As mandated

Sir, - We the undersigned, the RCSU executive, hereby carry out our mandate by informing you of a motion passed, by a small majority, at the last RCS UGM. The motion noted the Sex Discrimination Act, now law and also the existence within IC of an organisation, namely ICWA, which was believed to be sexist. The articles of constitution of this organisation include the denial of membership to male persons with the exception of the sexist post of Mr ICWA. Hence we have

been mandated to inform the FELIX Editor of this, and also the Equal Opportunities Board.

Having stated this, we the undersigned, being cowardly, rush to seek shelter from the wrath of ICWA which will inevitably follow the publication of this letter. Your ever humble servants,

STEVE BRIGHTMAN  
President  
JOHN WHITE  
Vice President  
NICK ROE  
Honorary Secretary

## Contact Week

Next week the West London Chaplaincy is holding its annual Contact Week.

The Chaplaincy will be host to a collection of theological students, vicars and nuns who will be available to meet students and discuss any aspects of Christianity with them.

There will be a member of the team staying in each

choice permits the inclusion of each specific point raised.

We would also appreciate further correspondence on this matter. - Editorial Board.)

Hall/Student House (who but the Chaplaincy would put a nun into Linstead for a week.

During the week various activities will be taking place in your Hall; look out for them

Activities for the whole College include the Chaplaincy Communion Service on Sunday (10.00am in the Consort Gallery) - including the sculptures; two Associated Studies lectures; a Folk Night (Tues 7.30pm, Union) and a Conviviality with worship (Thurs 7.30pm, Union).

Handbills and posters will be around (try lining the wpb with them).

# The Future of Postgraduate Education

476 AD Fall of Romulus Augustus  
 1876 AD Fall of Custer  
 1976 AD Fall of Postgraduate Education

AN EMOTIVE start maybe, but what is it all about? Last year saw the release of three reports on Postgraduate education/training by the SRC (Science Research Council), the CVCPL Committee of Vice-Chancellors and Principals) and the PECL Parliamentary Expenditure Committee). It is likely that these reports will be acted upon this year. If this action involves implementation of the recommendations per se, then what effect will it have on our education system?

The debate in the Houses of Parliament on the PEC report brought out many of the old criticisms of postgraduate study, viz:-

- (i) Postgraduate work is rarely orientated towards the current needs of society or industry;
- (ii) Postgraduates, especially in research, are educated too narrowly to be suited for industry afterwards; and
- (iii) A loan financed grant system would "test the motivations of post-graduates".

The values of postgraduate education to the individual and to the education system were sadly under-expressed.

A loan system would indeed test motivations; 99% of PGs would be severely deterred by the thought of entering the big bad world with a £6000 plus debt round their necks.

Both the SRC and PEC overlook the fact that university research is the foundation stone of our whole educational system which continually adds to the wealth of knowledge available to future generations.

The SRC put forward proposals for broadening postgraduate studies and even providing a "taught" course to postgraduate level. They conclude from their statistics that since 60% of science and engineering PGs finish up in Government and industrial research, these areas have the highest demand for PGs and therefore PG studies should be structured around the needs of these areas. The

ICU  
 The Academic Affairs committee sent a response to the SRC last term constructively criticising the findings of their report. A response to the CVCP report is now being prepared.

IC  
 A College working party on postgraduates (with three PG members) discussed the CVCP report and came down in favour of reductions in the number of grants to increase the value of awards. An alarming

SRC also calls for an increase of the number of industrial co-operative awards at the expense of normal grants.

A research student of the future may be assessed on productivity rather than academic quality and a project will need job/cost justification rather than educational merit. Surely all postgraduate education should be primarily an education and not a vocational training nor a way of producing industrially useful research on the cheap.

The CVCP report is a more liberal document and tries to cover the whole spectrum of postgraduate education. It defends research against outside encroachment and calls for a higher level of grant for postgraduates (the latter at the expense of the number of awards available). It attacks the present education cuts but only in so far as they are affecting universities. It is about time bodies like the CVCP put their foot down with a firm hand to stop cuts in all parts of education. If these cuts continue it is unlikely that the availability and quality of education for our own children will be as good as it is now.

The CVCP also defends the differential of fees for overseas students providing "fees are not as large as to make study in this country more expensive than in Europe or America". Some European countries have no university fees and many much lower fees with no differential. There are many good arguments for all education being centrally funded.

view for such a prominent research establishment to take. It also remained non-committal on the subject of overseas students fees.

NUS  
 Sue Slipman (NUS National Secretary) has had publicity this year over the direction of a very small proportion of the vast amount of work she has done for NUS. She has, however, been very active in the field of postgraduate education and is generally in favour of firmer and more concrete policy from NUS on Education as a whole.

Last Friday, she chaired a meeting of the Postgraduate Advisory Group of which I am a member. We discussed the reports and the form of our response. Sue affirmed that it would be useless to simply criticise the reports and that we must produce a response laying down clearly student views on the whole field of PG education and directions we would like it to take. In short, the Advisory Group is to prepare the NUS report on postgraduate education. Your comments as PGs or prospective PGs would be welcome.

- (i) Fight the education cuts. March on February 27th to show that you wish to preserve and increase, for future and present generations, the availability and quality of education.
- (ii) Support the campaign against the present fees situation which causes hardship for many students and makes study impossible for others. Campaign for 100% central funding of education.
- (iii) Help NUS to prepare a reasonable and representative report by saying by giving your opinions.

Lastly: A thought for the day -  
 "Knowledge is not a coin with which to purchase happiness but has happiness indissolubly bound up with it" - AF Hoasman.

Rick Parker  
 ICU AAO

## IC FOLK CLUB

with  
 Pete & Chris Coe  
 Wed 4 Feb  
 Union Lower Refectory  
 Singers Free

## Photographs - Resin paper only!

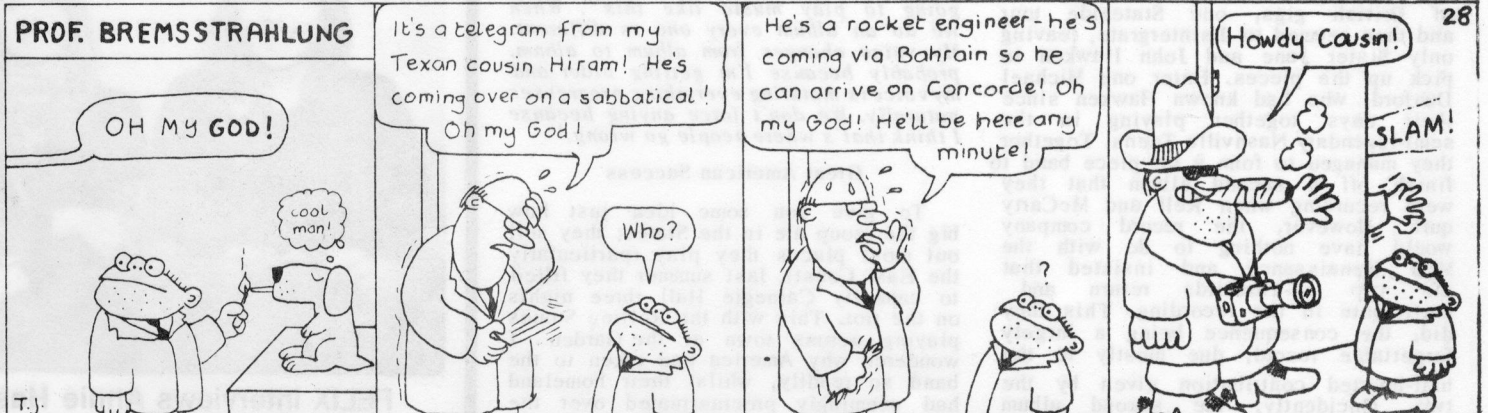
In future all photographs submitted for publication either in FELIX or on posters, programmes etc, should be printed on resin coated paper. Prints should possess normal contrast with full blacks and a minimum of tone in the highlights.

These measures are being implemented to avoid the unnecessary trouble caused when making plates due to prints made on a paper base or of poor contrast.

## IMPERIAL COLLEGE Astronomical Society

Present a lecture on:-  
 Ground Based Infra-Red Astronomy  
 by DM Selby  
 Thurs Feb 5th 1976  
 Physics LT 3 at 12.45pm

## PROF. BREMSSTRAHLUNG

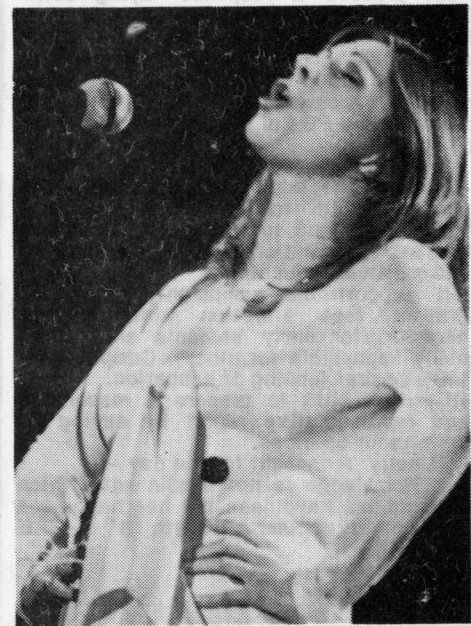


# RENAISSANCE

## The Band most likely to...

RENAISSANCE ARE one of those handful of bands to which the old saying about 'prophets in their own land' more than aptly applies.

For some time now, they have been one of the top box-office draws in America, yet for the majority of their existence they have been largely ignored in their native Britain. Whilst always having a consistent hard-core following, it's only in the last twelve months — with the release of 'Turn of the Cards' and the excellent 'Scheherazade' that British audiences have come to appreciate the subtle blending of traditional folk melodies with classical influences, while still sticking to the ever flexible rock genre. Now one feels it's only a matter of time (and money) before the band are enjoying the sort of full-blown success that they have achieved for themselves in the States.



Annie — "The Press didn't want to know us"

### Beginnings

Renaissance was first conceived as long ago as 1969, evolving around two ex-Yardbirds, Keith Relf and Jim McCarty, a bass player named Louis Cennamo, keyboard player John Hawken and Relf's sister Jane handling the vocals. This MkI version made one album, 'Kings and Queens' did a handful of British gigs, one Stateside tour and then seemed to disintegrate, leaving only Sister Jane and John Hawken to pick up the pieces. Enter one Michael Dunford, who had known Hawken since their days together playing in the semi-legendary Nashville Teens. Together they managed to form a six-piece band to finish off a second album that they were recording when Relf and McCarty quit. However, the record company would have nothing to do with the MkII Renaissance and insisted that the two ex-Yardbirds return and participate in the recording. This they did, the consequence being a largely forgettable record, due mostly to the half-hearted contribution given by the two. (Incidentally, the second album was never released in the States).

### Changes

By now disenchanted with the band, Hawken soon left to be replaced by John Tout, who had been playing with an Irish folk-rock group. It was inevitable I suppose that Jane Relf too should depart sooner or later into obscurity, and auditions were held to find a new female vocalist. The lady they chose had for the last six months been singing in the Strand production of Showboat, her first professional gig. Immediately the group realised that, potentially, her beautiful soprano voice might lead them to the musical direction they had been seeking. Her name was Annie Haslam. The rhythm section then left, to be replaced by John Camp, erstwhile member of Leapy Lee's backing group and Terry Sullivan, a drummer of great power and perception. This then, one might have thought was the most stable line up the band was going to get — but no. Just before Renaissance were going into the studio to record 'Prologue', Michael Dunford left, apparently to concentrate on the acoustic guitar, although he still contributed to the group by way of composition.

### Crash

They found a fine new guitarist named Mick Parsons — who after celebrating his new found job with the group, crashed his car into a wall and died. 'Prologue' is dedicated to Parsons.

There then followed a period with the band using guitarist Rob Hendry, but he didn't really fit in with the group's by now, defined musical ideology. At a rehearsal where Hendry failed to turn up, former member Dunford stood in on acoustic guitar and subsequently re-joined at the expense of Hendry. It is this line-up of Haslam, Tout, Sullivan, Camp and Dunford that has taken Renaissance through the last three albums, and that which played last week at Brunel University, where after a highly successful gig I spoke to Annie Haslam.

### Natural Progression

I asked her firstly how she, thought the music of Renaissance, had changed since she joined the band. "Before I joined, the classical rock thing was there. But their music was more baroque, very flowery classical music, and we changed it gradually into more dramatic music, more emotional music, 'cause that's the way we are as people. It was just a natural progression. We didn't sit down and think "right we're going to play music like this". When we do an album every one is different. My voice changes from album to album, probably because I'm getting older and my voice is maturing everything progresses naturally. We don't force anything because I think that's where people go wrong."

### Great American Success

To give you some idea just how big the group are in the States; they sell out most places they play (particularly the East Coast), last summer they filled to capacity Carnegie Hall three nights on the trot. This with the Rolling Stones playing across town at the Garden. I wondered why America had taken to the band so readily, whilst their homeland had seemingly procrastinated over the music for so long. "At first the British



Annie — the vocal instrumentalist

press didn't want to know us, they always had it against us," she complained, "because we weren't the original Renaissance". I think it was Jan Akkeman who said that the reason why America accepted European bands who stuck closely to their own musical heritage, was because they (Americans) had no real culture of their own and were willing to "buy instant culture". Did she go along with this thesis? "Yes I think there might be some truth in that. They have no history, no real classical roots to relate to bands like ELP and Yes although" she adds, "they're much different from ourselves, have these roots. All their bands sound the same".



FELIX interviews Annie Haslam

### Orchestra

The Carnegie Hall concerts were recorded with orchestra for a double album that should be released sometime next month. Having used an orchestra on a number of occasions in America, it seemed odd that Renaissance hadn't lined up a prestige gig in this country using one. where, incidentally, she prefers to work. "We've been told that it's too expensive to do over here, but the thing is I don't really like playing with an orchestra. If you play with one you have two or three days rehearsal really to get it absolutely perfect and its got to be perfect otherwise its not worth doing, and that costs an absolute fortune. It's very difficult. I mean they don't always play in tune, if the hall is hot everything goes out of tune anyway. I like playing without actually, I mean, it's a nice feel but usually your on stage and you can't hear them, and they can't hear you. You're worried all the time if they're going to come in on time and in tune. It's very difficult".

### Old Grey Half Hour

A quick look at the datesheet shows an abundance of University and College gigs. Presumably they still think there is a place for the college gig on the big concert circuit, considering many bands have priced themselves out of the Ents Committees' budgets. "I think people should do them" she emphasises, "I don't mind doing college gigs, you usually get treated very well, with a bit of respect". While at IC the band are being filmed for the 'Old Grey Whistle Test'. Did Annie have an opinion on televisions only contemporary music outlet? She thinks for a moment —

"To tell you the truth, I don't like it. There's no feeling in it. And when a group plays in the studio, thank God we're not doing it in the studio, it looks as though you're standing in a telephone box! The best thing about it is the cartoons, they're great".

### Brunel Gig

Renaissance that night had played in the College sport's centre, a large empty looking mass of brickwork, not one might think the most idyllic of settings for the romanticism that is so profound in their music. However, the band adapted themselves well to the occasion and played with fine gusto, the overall sound being as good as that achieved in most concert halls of compatible size. The songs played stretched from the early 'Prologue' album through to the latest 'Scheherazade' concept. Starting with 'I can't understand', from 'Ashes are Burning', and including 'Running Hard' 'Ocean Gypsy' and 'Prologue'. The only notable omission was 'Mother Russia', in my opinion their best song. (Incidentally, the song, which concerns Alexander Solzhenitzsyn, had to be dropped at one of the Carnegie Hall concerts when half the staff of the Russian Embassy turned up at the gig).



Annie — more emotional music

### Vocal Instrumentation

As has been said before, Annie's voice is used as an instrument rather than just a method of reciting lyrics, often singing in unison with the predominantly Eastern European piano technique of John Tout. The up-front bass of John Camp was used also as part of the melody line, rather than just part of the foundation for the rest to build on. Indeed, on occasion he swamped the acoustic guitar playing of Michael Dunford. The swank drumming of Terry Sullivan, with its assured sense of space, is used to tasteful effect. He drove the band through the changes of time and key. They were given a fine ovation by the sizeable attendance, and were brought back to encore with 'Ashes are Burning'.

After finishing off their present string of dates the band are off on a European tour co-heading with Tomita followed, presumably, with another lengthy tour of America. Shuffle along to the Great Hall on Saturday and catch them while you can.

Words Ian Morse

Pix Phil Dean

RENAISSANCE are giving a concert in the Great Hall tomorrow evening, so don't miss it.... The concert starts at 8.00pm They're even going to film it!



John Camp

# External Eclairs

THE MOST interesting thing to come out of the CCU debates on the NUS, was the consensus that "we must work hard and democratically to make NUS what we want it to be instead of sitting on our backsides". So I hope that we shall see well attended Union meetings to discuss motions and amendments for NUS conferences, and a few more people standing for conference delegations.

## NUS - no impact

I was interested to read Mary Attenborough's letter in the last issue of FELIX. I am sure that most students would agree her statement that our main need is "an organisation to represent our interests and views at a national level". But as Riz Shakir said last week, the NUS has not had much impact in the corridors of power. I would suggest that this is because the NUS is not believed to be genuinely representative of students.

In order to give it real power, we must do three things; (a) democratise the Union at all levels, and that includes democratising our own Union! (b) change the Union from a federal structure to a union of individual members; (c) stop it wasting time and money campaigning on issues not of direct relevance to students; for example, international affairs, revolutions, and telling the Government how to run the country.

All three are closely interrelated, and if we are not prepared to work hard to achieve them, then we might as well join those Unions such as Manchester, St Andrews, St Davids and Newcastle who are expected to leave

NUS very soon, and those such as Aston and Charing Cross Hospital Medical School who have already done so. Some people are suggesting that we set up an alternative Union; but I think it is more realistic to do something with the one we already have.

## 'Broad Right' needed

The only way that change can be realised is through building up a political machine as powerful as that of the Broad Left (the dominant political bloc in NUS), which is obviously not something we can do over-night. In every college in Britain, Communists and other Marxists will have to be opposed in elections for union posts and for conference delegations, by Independents, Liberals and Conservatives. These people must then produce a network similar to that of the Broad Left but working for a relevant NUS and through that a better deal for students.

## Democracy - two types

Finally, I would like to say something about the meaning of "democracy". Essentially there are two contradictory concepts which must not be confused in student politics or elsewhere; firstly, there is "active democracy", as advocated by Mary Attenborough and her party. In an "active democracy", all decisions are taken by "activists", that is, by meetings such as Union General Meetings attended by a small proportion of the population. Hence it follows that in a Student Union, all officers would be elected by such meetings and could only act when

# Equality-what the law says

We may all know what happened on 29th December last year, but how does it affect us? Perhaps you are applying for jobs or for a postgraduate course or even looking for somewhere to live. If so, the Sex Discrimination and Equal Pay Acts could help you.

## Employment and Advertising

Employers can no longer discriminate against a person on the grounds of sex, either in recruitment or, if you get the job, in training or promotion. Remember, discrimination against a person because they are married is also illegal in employment. Job advertisements that in any way favour

one particular sex are illegal. There are a few minor exceptions. Men and women must be paid equally for doing the same or an equivalent job.

## Education

Colleges, Universities and Co-Ed schools cannot discriminate in their admissions as from 1st September 1976.

## Accommodation etc.

In general, you may not be refused a place in a flat, boarding house or hotel because of your sex. Neither may you be refused service in a restaurant. In obtaining credit facilities and mortgages you must be offered the same terms as would be given to someone of the opposite sex.

## The Equal Opportunities Commission

The Commission was set up as watch dog over the reinforcement of the Sex Discrimination and Equal Pay Acts. It is also empowered to make recommendations to the government on existing law. It will advise people of their rights and over major issues it may help an individual to bring a case. The Commission can set up its own formal investigations and, when necessary, issue non-discrimination notices.

## Bringing complaints

This can be done through the county courts or by an industrial tribunal in employment cases. Advertising complaints are dealt with only by the Commission. Employment complaints must be brought within three months and others within six.

For full details come along to the Welfare Centre which is at the top of the Union building. We are open from 12.30 to 1.30pm Mon-Fri.

Sue Kalicinski  
Welfare Officer

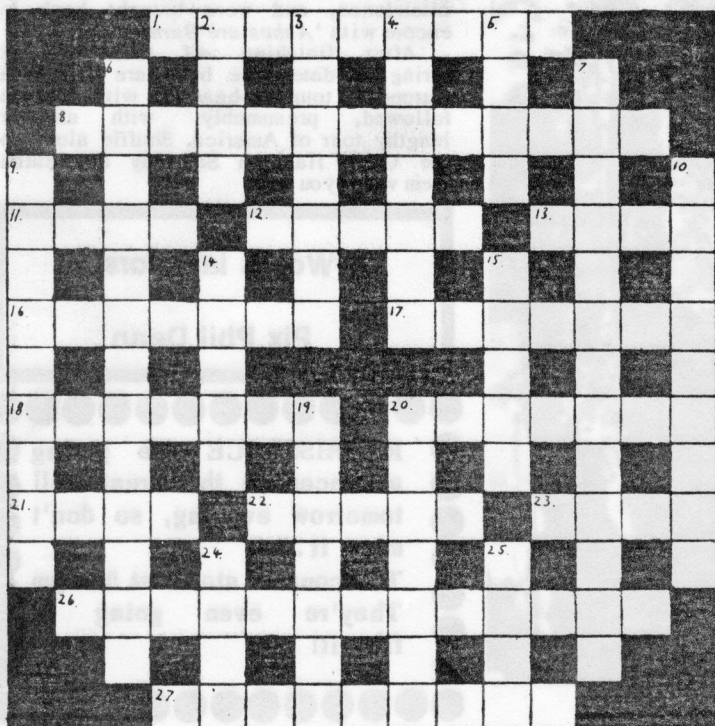
instructed by a meeting.

In opposition to this is "representative democracy", under which officers are elected by a ballot in which everyone may vote and once elected may take decisions on their own initiative. However, the latter system does not prevent officers being accountable to a General Meeting, as is the situation at IC.

At many colleges, the sovereign body is not the General Meeting, but a Representative Council on the Parliamentary model. Probably such a council would be preferable to the present ICU Council which is mostly composed of officers accountable to a General Meeting. This is being investigated by the Working Party on Union Response.

Whatever may be decided, I hope that the sovereignty of the General Meeting will be retained, even if it is only to be a safeguard, called in emergencies to debate specific issues.

## PRIZE CROSSWORD No. 29



### ACROSS

1. Sound at a distance (9)
8. Side by side (13)
11. "I live in a hole" (4)
12. Explorers' store (5)
13. From cuts in cars (4)
16. Circular hair not for sale (7)
17. Dad makes paper with syrup (7)
18. Her cupboard was bare (7)
20. Clean mother in fetters (7)
21. - my word! (4)
22. Ill will (5)
23. Wooden with shoe or family (4)
26. Mother in forceful heat (13)
27. To aid excuses (9)

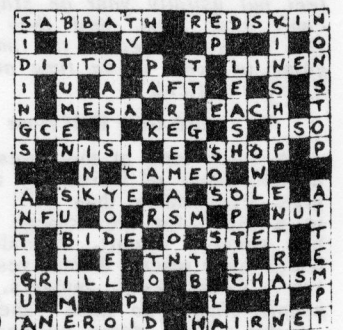
### DOWN

2. Not difficult (4)
3. Charm, or perhaps hen can't (7)
4. Join horse to waggon or maybe lose bags (5,2)
5. Naughty fellow in church (4)
6. Are elections fought here? (7,6)
7. Trained by a national force (8,5)
9. Shapeless (9)
10. Became wealthier (9)
14. Begging request (5)
15. Pin in long nerve (5)
19. Old Peer finds it lamentable (7)
20. "From - -" (2,2,3)

24. King in lard maybe (4)
25. "A cobbler should stick to his -" (4)

The £1 winner will be drawn from the Editor's Hat at noon next Wednesday 4th February. The Editor's decision will be final.

### Solution to Crossword No. 28



The winner of Crossword No. 28 was Paul Bonner (yet again!)

# Reviews

## Theatre

### RSC inject new insight

The Royal Shakespeare Company in "Henry V" at the Aldwych Theatre

'STERRY HANDS' production to constitute the RSC's last desperate plea to the Art's Council? It seems so, for as the audience arrive the cast are already on stage, dressed casually in track-suits or jeans and sweaters. They wave cheerily to friends in the auditorium or wander expectantly up and down as though waiting for the pubs to open. But this stark, static beginning serves to emphasise the splendour to follow. As if materialised out of thin air by Emrys James' friendly and persuasive chorus, costumes and props gradually appear; first the gold casket, then gigantic military equipment. A vast multicoloured canopy depicts the court scenes, then falls to represent the grey battle fields of France.

Visually impressive though the production is, the military and patristic aspects of the play are toned down, in favour of a closer examination of the King. Alan Howard's Henry is a young and inexperienced sovereign who, mindful of his past, has to strive to gain the trust of others. Great effort is required to sustain the veneer of kingship, and a number of lapses into self pity and loss of confidence occur. After Harfleur, Bardolph's execution

order and the list of the French dead, we see Henry almost completely drained of regality. Each time, however, command returns almost as quickly as it departed, and Henry resumes his role as king. Although little assistance is provided by Shakespeare's text, Mr Howard effects these and other subtleties very convincingly. He possesses a remarkably powerful and penetrating voice, and his delivery of the lines is riveting.

The success of any play cannot depend solely on its central character; in this production the RSC as a whole are in excellent form. TREVOR PEACOCK (Fluellen), Richard Moore (Pistol) and Geoffrey Hutchings (Danphin) provide especially illuminating performances, and the "French" scenes with Carole Rousseau (Katharine) and Yvonne Coulette (Alice) are played with charm and delicacy. Peter Bourke, as the Boy achieves such a rare degree of communication with the audience that his death, although expected, comes as a disappointing blow.

This production richly deserves its wide acclaim. It provides fresh insight into the writing of Shakespeare, and must go some way in restoring loss of confidence in the nationalised theatre.

Steve Grove

## Blackmail, disinheritance, boiling water

"Plunder" by Ben Travers.

The National Theatre at the Old Vic.

I say, old fruit, why don't you just toddle down to the Old Vic at Waterloo? The National Theatre are doing a simply splendid run of the old Ben Travers farce, Plunder. You remember those frightfully amusing Aldwych farces of the twenties? Well, this is one of those, and it's a rattling good evening's entertainment.

It's written on the traditional lines of farce and not at all like those frightful modern imitations with trouserless bishops coming from an interminable series of bedrooms. You remember the old style sort of thing, don't you? Act I: meet the characters and assess the situation. Act II the silly old ass gets into hot water, though in this case its dashed near to boiling, and Act III: he gets out of it by the skin of his teeth.

What makes this one so ripping is the addition of a crime, and a really live body, well a dead one actually; and then there's a bit of disinheritance and blackmail thrown in on the side, to add to the fun.

Dinsdale Landen makes the perfect silly old ass. On the stage I mean. He's D'Arcy Tuck, suitor to the disinherited Joan Hewlett. His interview with the police at Scotland Yard is top hole stuff. And who'd've thought that D'Arcy could be such a booby as to take a sniff of the knock-out drops intended for the victim of the robbery? I mean to say— Well, I jolly well do say what I mean to...say...yes, indeed.

Who'd you think is behind all these going-ons, what? It's that Frank Finlay chappie; all Cassanova and Hitler. Never seen such a crafty looking man in my life, devious even. But will Mrs Hewlett see through him as he eyes her valuable jewellery? No she jolly well won't, because she's a social climber of the first water. She's played by Dandy Nichols and I never knew a woman could be so fat; as D'Arcy remarked, you'd need a taxi to get round her.

The play is full of toppling funny moments, but you, brought up on a diet of television comedy, might find the first act a bit hard going. As the proverb runs, a little patience is always warmly rewarded, what?, even with a little boiling water.

Thomas Stevenson

## Music

### Brain-damage

Hydra — Land of Honey (Capricorn)

THE POWER-CHORD barrage of the first few seconds quickly puts you in the picture as to possible brain-damage for an unprepared listener to this waxing. The opening couple of sentences are needless to say, the only intelligible ones before the decibel ton-up is registered on the old eardrum-o-meter and from then on, all you catch are the intermittent screams of "Little miss rock 'n roll" (innovative, huh?) but the music — great, gutsy, rock of good quality — is pretty interesting, even good for such a tired and overworked genre. Hydra have certainly learned their licks well.

Spencer Kirkpatrick, on lead guitar, is the central figure in dis'combo and worry though, 'cos the songs are strong enough, and are well enough played to make it all worthwhile. If they can reproduce anything like this live they'll be worth shakin' out yer shekles for at the local Palais-de-Dance. Hydra emerged from the rough-and-tumble Southern states bar-and-club circuit around 1972 and supplies the energy while the rhythm section of Orville Davis (bass) and Steve Pace (drums) maintain a competent background driving force. The vocals of Wayne Bruce are something else though, reminiscent of Edgar (or Johnny) Winter, ie pretty terrible and more than often sound painfully strained. Not to have impressed enough people sufficiently

since then to acquire the services of the Allman Bros producer, Johnny Sandlin, for this, their second album.

It's all about the label really. When you see a new release under the Capricorn moniker you know what the game is — you're in for some uncompromising country or boogie, whether it's good or bad. No deals.

So, if Hydra can keep their heads together, they might inject a bit of bite into a currently easy prey — the jaded rock scene of the moment. Shame you can never get rock'n' rollers to write worthwhile lyrics, though. Part and parcel of the job, I s'pose.

Hic

### Communist Party branch education/discussion meetings

All unwelcome

Held on Mondays at 7.30pm in the ICWA lounge, Union Building.

2 Feb Origin of the family, Private Property and the State — session 1 introduced by Mary Attenborough.

9 Feb 1st Congress of the Communist Party of Cuba. Reuben Falber (Assistant General Secretary of the Communist Party of Great Britain)

16 Feb Origin of the Family — session 2 introduced by Jean Tabouret.

23 Feb Origin of the Family — session 3 introduced by Paul Watkins.

1 March Socialist Democracy in the Soviet Union and Britain. Peter Holland

(a follow up to the debate now taking place in Marxism Today, theoretical Journal of the CP, and the branch public meeting see below)

8 March Origin of the family — session 4. Development of Marxist views since Engels — speaker to be announced.

Public Meetings

Tuesday 3rd Feb 1.00pm The Women's Movement-Phillipa Langton — Lecturer, Workers Education Association.

Tuesday Feb 24th 1.00pm Socialist Democracy — Betty Matthews — Head of the Education Department of the CP. Venues to be announced. All welcome.



# An introduction to a discussion on the Origin of the Family, Private Property and the State by Frederick Engels.

THIS BOOK aims to show that the institutions of society are necessarily linked with its economic basis. because of this, both the family as we know it today, and the state have not always existed. Much of Engels' facts are taken from LH Morgan's "Ancient Society" (1877).

He begins by looking at the different kinds of early society and noting that they are differentiated only by the methods of production of food and basic necessities. There were three basic stages:-

- a) Savagery - where people lived off nature as they found it, the only tools used were to help in hunting eg bows and arrows, spears etc.;
- b) Barbarism - the beginning of organised production of food with simple agriculture and domestication of animals (where suitable animals existed);
- c) Early civilisation - a very great leap forward in amounts capable of being produced. This arose mainly out of iron in agricultural tools eg ploughs, which very much increased production.

In tracing the history of the family through these stages of society it becomes clear that the monogamous family has not existed for all time nor has the subjugation of women, inherent, in our present family structure.

Forms of the family, or more strictly, limitations of peoples with whom sexual intercourse was permitted, initially came about purely through the necessity to reduce inbreeding. Those tribes that practised such restrictions grew in strength through natural selection. In the very early stages marriage groups would be ranged according to generations such that brother and sister would be in the same group and able to have sexual intercourse but not parents and children.

Later structures were more complicated with gens (or extended families) within a tribe based initially on "mother right". These gens consisted of descendants on the females side and sexual intercourse or pairing marriage was not allowed within them. Thus, one gens could take partners from some other gens but not from its own and because of this structure the gens was regarded as the immediate family. Thus a man would regard his sisters children as nearer relatives than his own children, infact, as it was not necessary for paternity to be known, descent was only recognised through the female line.

Within this system pairing marriage existed but of quite a loose nature. Monogamy was not forced upon the women and a marriage could be broken off by either side with relative ease. Preparation of food, rearing of children and living accommodation were often organised communally.

As the means of agricultural production developed into the stage of early civilization, there became a surplus from production, over and above the basic needs for survival, and private wealth existed for the first time.

The man had always been the one actively involved in production although before that time the division of labour between male and female had not been degrading, it was merely a natural occurrence. Now wealth became the possession of a man through production and he wished to pass this on through his family to his children. Then came "father right" within the gens structure. A woman would leave her gens to marry and would as time persisted be required to keep chaste before marriage and could be punished for adultery.

Prostitution and adultery (on the

part of the male) however, went side by side with the monogamy. The monogamous family, in many ways, was the greatest defeat for womankind because it degraded her to the level of a mere possession.

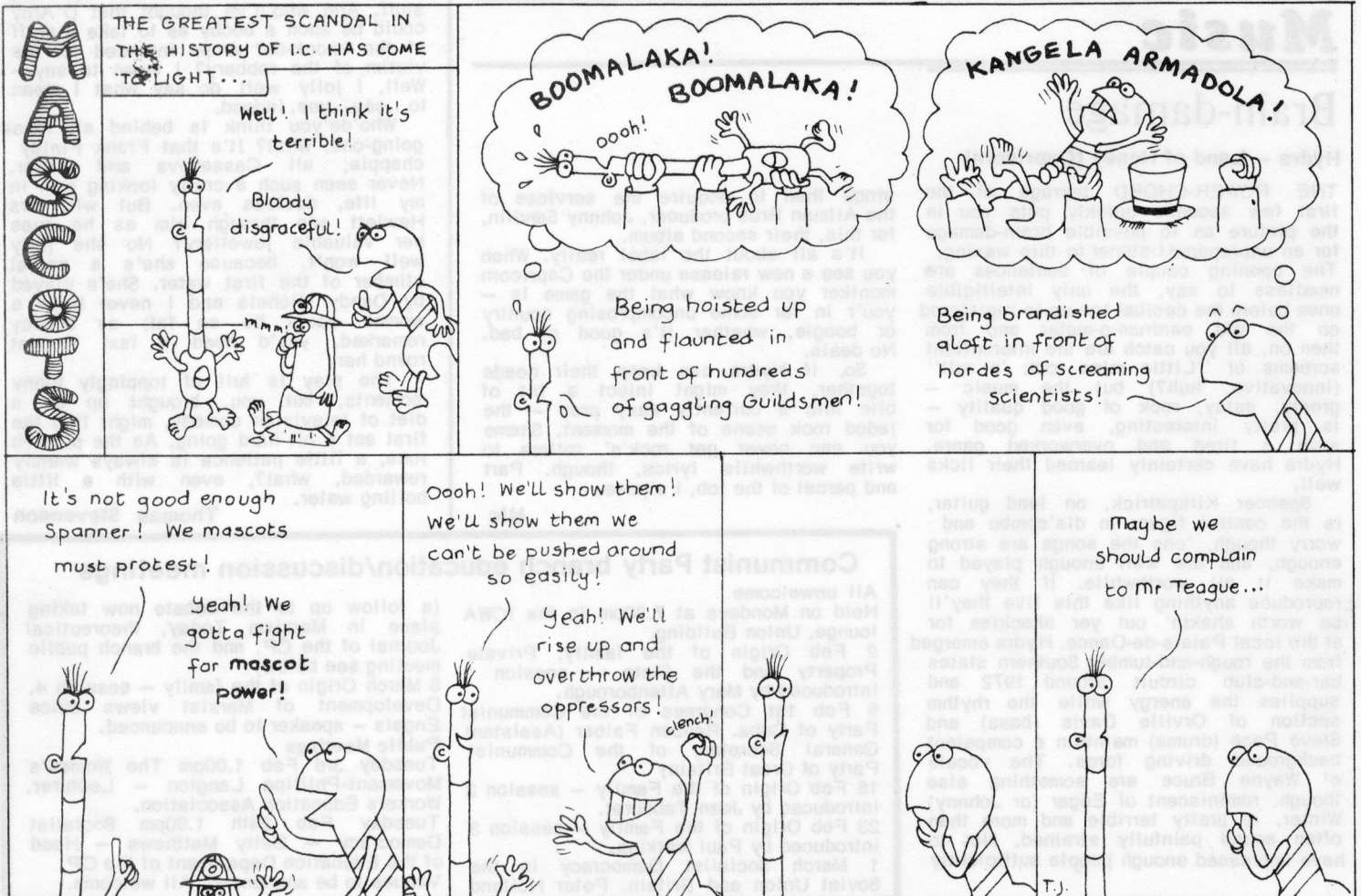
The necessity to protect wealth also brought about the development of the state. Under the organisation of barbarism all members of the tribe took part in decision making, chiefs would usually be figureheads with most decisions collectively made.

However, as uneven growth led to a few growing rich, often taking possession of the lands of others, it led to a stage in society when the wealth of the few had to be protected for the poor. This led to a "police" force and other state institutions to be used, not for the common good, but to protect the privileged within the society against the underprivileged.

This is a very brief sketch of the fascinating ideas contained in this book. Engels draws on examples from American Indians, Australian aborigines and from early Roman Greek and the Germanic tribes organisation.

He highlights how, as commodity production developed, economic forces and laws of production often seem to rule over humankind and looks forward to a stage of society when humans will truly control their own lives - when the family ceased to be an economic unit and becomes an expression of "individual sex love", when the state will no longer be necessary as an organ of oppression of one class by another and all decisions on the organisation of society can be taken by communities for the good of the whole community.

Mary Attenborough



# FELIX SPORT

## Orienteering

### More on the way up

THE SNOW LAY thick last Sunday as the Orienteering Club ventured forth to the icy wastes of Berkshire. Gallowstree Common was the venue for the 'Chiltern Challenge' Badge Event.

Captain David Rosen ran hard to come third on the 12.8 kilometre course in 72 minutes. He had the satisfaction of knowing that he was beaten by two good men; both are ex-British Champions. Also, he avenged last weeks defeat by Alistair Doyle, the University Captain, who this week was slower by 10 minutes.

Alan Leakey once more proved that experience is more important than running speed by coming in 9 minutes clear of Rob Allinson. The course was a fast flat one and Rob had plenty of opportunity to stretch his long legs. With a bit more orienteering speed (rather than running speed), he should soon be coming higher up - Alan will have to do some training to keep up! Steve Webb could also be a force to reckon with in the future; he did better this week pipping Pete Johnson by 5 minutes.

John Gibbins, the club treasurer, looked resplendent in his newly purchased orienteering kit (he denies all rumours that it was bought with club funds). He completed

## Hockey

### 'Pros' win another pint

AN OFFER to turn professional was finally accepted by the first team forwards. The terms of the contract being a pint of ESB for each win. Their minds and sticks were further concentrated by the knowledge that at any moment Jaspar 'bites your bottom' Cooke's lucky shorts (used in kindergarten) might so constrict his nether regions as to make him eligible for the ladies' team.

A number of thrusts down both wings, by the insides M Isles and A Ross, and the wing-halves Kim 'Flicker' Howden and J Andrews who distinguished themselves in their adriot distribution, only produced Chas Hardy style finishing. This meant that when the opposition made their first attack and scored, IC had not yet troubled the scorer. This is a not unfamiliar situation to the

first team, and their response this time was a revelation.

A ball from the defence to Bob "where can I get my leg synchronised?" Middleton was passed on to Trevor Tutu, who found M Isles moving cleverly into space. Mike "I can score from anywhere, but short-corners" Isles had no trouble in going round the fullback and hammering the ball past the charging goal keeper.

The next goal came from a neat ball into the 'D'. The attack was constructed on the right wing by John. "I know I said I was leaving" Andrews and A" let me be a forward" Ross interchanging passes. Delicate control, and timing at the run left Trevor "Puts them away" Tutu with only the goalkeeper to flick past. No one misses those.

The third goal, which Trevor "short arms, deep

pockets" Tutu refused to claim for financial reasons, came from a push in by John Andrews who played the ball into Trevor Tutu's path. He noticed the goal-keeper off his line waiting for the cross. The shot was deflected by the goalie's pads into the net.

Charlie "Ballon Feet" Brown couldn't let the game go by without making a ghastly error to eliminate his otherwise excellent play, so he let in a short-corner. But such was our dominance, with Jim "here I come" Marshall making the overlap, Jaspar "Geronimo" Cooke's voice getting higher, passes going to stick, that IC managed to score three more times. Their referee managed to disallow two goals from Trevor Tutu, and one from Allan "Gumshield" Brown.

the 8 kilometre course along with Mike Welford and Len Faircett. Martin Kessler was not so lucky, getting totally lost and only completing half the course. However, he showed that his orienteering skill is not entirely absent by successfully locating the pub before closing time. He claims that if all the controls smelled of beer, he'd have no trouble.

From now on, the orienteering club meets every Friday lunch-time at 12.30pm in Beit 57. There will be a cheap bread and cheese lunch available and everyone is welcome to drop in for a chat and a bite to eat.

David Rosen

## Potters Bar crushed

Imperial College 3rd XI 7

Potters Bar

0

LAST SATURDAY, the third team set off for the wilds of Potters Bar. By the time the thirds arrived at their destination, it had commenced snowing and during the match they were treated to flurries of snow, sleet and hail!

Potters Bar 3rd XI stood no chance against the IC team who proceeded to tear them apart from the bully-off. Within ten minutes they had conceded a short corner. A good hand-stop by Nick Bell enabled Chris Parker to put the ball in the net, and five minutes later, Nick scored as well. Our latest recruit, Iain Stirling, proved himself by scoring our third goal.

The second half was similar to the first but we scored more goals. The first of these

was a penalty which Chris Parker managed to convert (unlike last week). The fifth goal was put in by Iain Stirling, a player of sterling qualities. Our last two goals were scored by Paul Kurowski, the second of these being an excellent solo effort.

All through the game, Potters Bar did not get a serious shot at goal thanks to a very competent defence. This was another well deserved victory. The only grouses were that no "Jugs" were scored and that the onset of cold weather had resulted in the reappearance of Chris Parker's deadly-smelling horse liniment. Team:- N Harrison, P Nair, R Vaz, A Bell, C Parker (capt.), M Bachyowski, P Kurowski, N Bell, I Stirling, E Reed.

## Rugby

### Depleted pack rob's A's of a win

Imperial College A's 6

University College (III) 20

THE A's BADLY wanted to win this game. The reason they did not, was a depleted pack. Four of the regular forwards had departed, for one reason or another.

The A' arrived at Harlington without a referee, the job having been declined by everyone who was approached. UC arrived with an extra player and suggested that he should play for the A's while an A player refereed. Steve Downing readily agreed. He had seen the snow and suddenly the idea of spending the afternoon in a warm track suit over umpteen shirts

appealed to him. That, however, depleted the pack still further and was to ensure the A's downfall. While the forwards were still trying to get themselves organised UC scored, and they were to score again in the first half, but not before they coped with a lot of pressure from the A's. Half-time arrived with the A's 10-0 down.

There was a revival in the second half with the pack - especially the second row - playing better. John Fishburn twice came close to scoring. (At half time it had been decided to give the backs

more of the ball and so to exploit UC's bad covering and that proved to be pretty successful.) UC scored a breakaway try. The ball went down field leading to a ruck on the A's line. A UC forward exploited the lack of cover and scored. The A's fought back. Chris Becque worked hard and received his reward when he ran in a try from the 25 (yard) line following a mistake by the UC's backs. Dick Pullen kicked the conversion. Dick had been having a good game at full back, kicking calmly under pressure.

This was another disappointing result for the A's. If the forwards had been able to match the backs the A's could

have won. Simon Little, making his debut in the pack, tried hard. Tony Fitzgerald was tireless.

Thanks to Rich Jenner for organising the team for the last two matches. Rich played well in spite of his heavy cold.

Team:- R Pullen, L Davies, C Beque, R Leeson, J Pitcher, J Thomas, G Sweatman, J Day, A Fitzgerald, C Cuthbertson, S Little, G Davies, R Jenner, J Fishlow.

Chris Cuthbertson

More  
SPORT  
overleaf





Table tennis

Pingpong victory 1

Imperial College 1st 8  
NCB 3rd 1

THE RETURN match in the league against NCB 3rd's proved much easier than the first encounter between the two teams when IC won 5-4 after being 4-3 down. This time Crawford of NCB could not conjure up the skill he used last time in winning 2 out of his 3 games, and was soundly beaten in all 3 games. Kim-Wei Ho and the captain

both won all three of their games, Colin McDonald was unfortunate to lose to their number one player who played very much above himself to win NCB's only game.

Pingpong victory 2

Imperial College 2nd 5  
NCB 4th 4  
Imperial College 2nd 7  
Dept. of Environment 2

IT WAS A very tough week for the second team, playing at home to second placed NCB 4th team and third placed Dept. of the Environment in their league. William Ho lost his unbeaten record, but a good all round team performance helped clinch a narrow victory over NCB. By beating Dept. of Environment the second team displaced them for 3rd place spot in the division. The big test now will be this weeks game against the divisions unbeaten leaders Paddington College 1st team. Good luck to them, a win

NUPE win co-operation

A PROPOSAL CALLING for a lightening 24-hour strike was narrowly defeated at a NUPE (National Union for Public Employees), meeting held last Tuesday morning. Another proposal condemning "the act of non-co-operation by the management with our shop-stewards" was put forward by Mr R Patterson and carried by a majority.

The act of non-co-operation referred to moves by the College to retire staff who were past the age of retirement. The College had also dismissed one man who had (and is still) suffering from a blood complaint and sacked two counter hands from Southside Refectory.

Mr Fisher, branch secretary, together with M. Beach and

Mr. Barridge subsequently met with Mr Malone, Capt Lindley and Mr Roland later the same morning. According to a letter being sent out to NUPE members this weekend, the management agreed to greater co-operation with the shop stewards.

The sick man who was dismissed has also had his dismissal notice cancelled and a letter sent to him informing him that the College will endeavour to provide or offer him a suitable position when he returns from sick leave.

Mr Fisher is to approach the College with proposal asking for a staggered pre-retirement period of three months for those next in line to be retired. The system he proposes is for a week in the first month, two days off in the second month and three days off in the third and final month.

Initial reaction to the proposal has been favourable.

would certainly throw the division wide open.

Trevor Walker

Dear People,

I am here to bore you with a few indolent trivialities relevant to your student contribution to charity.

For some years now, various persons have been concerned with unimaginative, affected, impactless name given to Rag(!) ie 'Imperial College Charity Carnival! With this in mind it has been decided to institute a competition to find a new name and new image, the first (and only) prize being a large bottle of spirits! Suggested names should be clean, catchy and relevant to Imperial College.

Write your entry on the form below and either deliver it by hand or internal post to Imperial College Union. The winner will be selected by a simple majority vote at the last Union meeting of Term (4th March).

The next item is to do with choice of charities for next year's

Rag. We have drawn up a short list of a number of registered charities selected on the basis of possible ways in which they can help our collections (stickers, badges etc) it is up to you to decide which one of these should be supported next year. Just tick the charity you think most needy on the form below and return it to IC Union office.

The penultimate thing is the State of Rag this year ie How much we've collected. Things are not as good as last year on the whole, but the Rag Mag is making money more quickly than last year.

Finally, collections for this term, Each of the CCU's will be having 3 collections along with Rag Mag selling trips to colleges inside London and one or two outside. Term will probably finish off with the Chariot Race. Details from the CCU's.

PS Elections coming up soon, anyone interested in standing for any posts see me or someone in the Union office.

JOHN KEARNS

PLEASE RETURN VIA INTERNAL MAIL OR BY HAND TO ICU OFFICE(RAG)

Want to win a bottle of booze? Then stretch your mind, ruminate a while...and think of a name for RAG e.g. "BARB RAG"

For Birmingham University.

TITLE -----

NAME ----- DEPT.-----

Have you any other suggestions for RAG in the future?

-----  
-----

The following charities are shortlisted for next year's Rag. Please tick in one of the boxes.

- CANCER RESEARCH
- ASTHMA RESEARCH
- NATIONAL KIDNEY RESEARCH
- SPASTICS ASSOCIATION
- MUSCULAR DYSTROPHY
- MIND(MENTAL HEALTH RESEARCH)