



FELIX SPECIAL ^{1d}

WEDNESDAY, 27 APRIL 1966

230

NUS airborne again

STUDENTS planning summer holidays in Portugal, Israel or Greece will as a result of an Easter conference be able to travel by NUS charter flights. On 15 April a motion urging council to apply for full membership of the pro-Western International Student Conference was carried by a clear majority.

This reversed the decision of the November council which defeated an executive motion to join ISC. The ISC is an international body set up in 1950 after students from countries outside the communist bloc walked out of the communist-dominated International Union of Students.

Geoffrey Martin, of Queen's University, Belfast, who proposed the motion, scored a double success by also being elected as the next President of NUS. He succeeds Bill Savage, also of Queen's, Belfast, whose two-year term of office ends in November.

GSO lowers its sights

LACK OF FUNDS has forced Graduate Service Overseas, the voluntary service division of NUS, to send only twenty of a projected 150 abroad this year. An NUS spokesman stated "the best part of a hundred had been passed on to the United Nations Organisation and Voluntary Service Overseas. GSO is 25% financed by NUS, the rest being made up by the Ministry of Overseas Development.



CHRISTINE YOULE in her "robes of office" at the ICW Formal on 25 March after being chosen from the four finalists as IC's 1966 Carnival Queen.

Press association

A PRESS ASSOCIATION is to be set up under the auspices of NUS, which will allow participation also by non-affiliated colleges such as IC.

Approved at last —

Procession is definitely on

by IAN WILLIAMS

IC'S 1966 CARNIVAL Procession will definitely take place on Saturday, 14 May. Chelsea Police have finally agreed to permit collections to be taken in shops and public bars, but have given no official sanction to such activities on the public highway.

This decision follows recent reports in the local press and FELIX.

What is critical now, Week Events Organiser Angela Price points out, is the provision of floats. To date twelve lorries have been acquired, less than half of which have been claimed by would-be exhibitionists.

Helpers, especially those with ideas, are also urgently needed for the stalls at the Garden Fete which follows the Procession and they are asked to delay not a moment longer in contacting Dick Drayton, Maths IIB or room 36 Garden Hall.

Carnival programme
centre pages

INTERESTED IN:

- LAW
- LOTTERIES
- LIGHTHOUSES

Then come to the

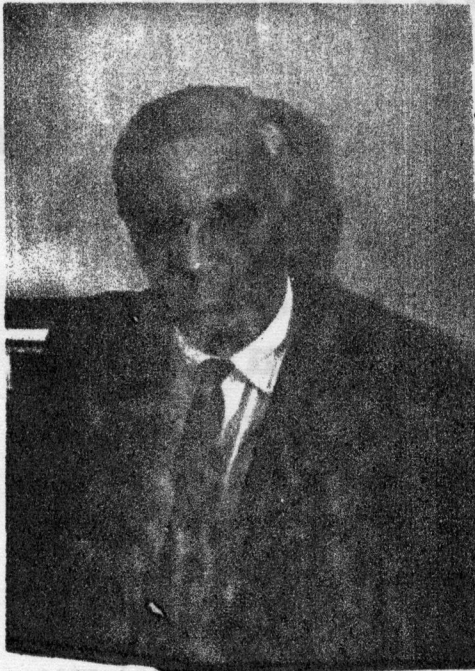
HALDANE LIBRARY

13 Prince's Gardens
for a book about it.

Open 11—5.30 daily (11—7 on
Tuesdays and Thursdays)

The Registrar retires

OUT Mr E F CUTLIFFE



Mr E.F. CUTCLIFFE, MBE, MA is to retire from the post of Registrar of Imperial College. After taking a degree in chemistry at Lincoln College, Oxford, Mr. Cutcliffe joined the staff of Fry's Chocolate Ltd. He came to I.C. as Deputy Registrar following

ten years spent in different administrative posts with Frys. After three years he was appointed Registrar, and has held this position for 27 years.

He retires to a 4½ acre woodland which he intends to cultivate, but may take a part time job to ease the transition to retirement after being so active at I.C. FELIX wishes him happiness in his new-found leisure.

Mr J. TAYLOR BA is to replace Mr Cutcliffe, he steps up from Deputy Registrar. A graduate in Economics from LSE, after a year in research he joined the lecturing staff of Leicester University. At Leicester he decided to switch to University Administration and became Assistant Registrar there. Mr Taylor has now been at IC since 1957, he enjoys working here, and thinks it "a great place". When asked if he thought much would be gained by IC leaving the University of London, he

UP

Mr J TAYLOR



said that he considered already had a strong enough reputation. "The achievements of Imperial College, and its fame, are already strongly established without the necessity of the formation of "University of South Kensington".

Delegates demand votes investigation

from FRANK FUCHS
FELIX Reporter at NUS Council

THE MOST blatant maneuvering and electioneering ever seen at an NUS Council finally led to a massive revolt of delegates and a demand for a full investigation into voting procedures.

NUS Vice-President Roger Lyons, 22-year-old ex-President of University College, London, last year described Councils as "political Mardi-Gras". Another member of the Executive, Albert Swindlehurst, was quoted in the Times Educational Supplement a week before this Council as accusing the Senior Treasurers of chicanery; "One even canvassed against an Executive candidate at the same time as acting as returning officer."

It all came to a head this Easter. Treasurer Jeff Galley and three other Exec members

openly defied the "election ticket" system used to ensure self-perpetuation.

Galley stood for the Presidency and lost by 230 votes to 170. The successful candidate, Geoff Martin, was backed by the retiring President, Bill Savage. But he was so unsubtle in his use of the election machine that even the most unsophisticated delegates woke up — too late for this year, but ready for next!

Major decisions taken include a reversal of last Council's foreign policy stand. NUS is now committed to the pro-Western ISC. Implementation was this year's emotive word — how to turn wordy policies into real action. The Exec was finally instructed to prepare plans, including a Parliament lobby (a la IC!)



It's not often that we see 100 photographs, but this hot-air drier in the toilet seemed worthy of at least someone else's atten-

C O M M E N T by the editor

THE RECENT mixed fortunes and misfortunes of the University of London newspaper SENNET, with a vast succession of editors and compliments at this year's Student Journalists' Conference once again leads one (or at least this one) to ask, what makes a student newspaper ?

Two things are essential -- its staff and the pride they bear in the job in which they are engaged. That these are the only criteria is certainly not the case.

For instance, the quality of production can well boost a newspaper's staff's ego. Bedford College's INNER CIRCULAR next month goes into print. One day, perhaps, South London's SMITHS NEWS too will grow out of the realm of the duplicated "grot sheet".

In an issue such as this (you may recall that we ran a similar one in January), critics would say that FELIX is steering a sternward course. FELIX is, however, the most effective publicity medium in the College, and should be providing a news service right through the academic year. At the beginning of term there is too little time to produce a full-size offset-printed edition and its cost would be prohibitive.

There are yet other reasons for publishing such an issue. Not only is it an exercise in the use of an excellent facility that we have inherited from former FELIX staffs and which the Union acquired specifically for FELIX use some four years ago -- the duplicator -- but it gives us the opportunity to try out new techniques, but it also follows that should we at any time be faced with a national printing strike, FELIX WILL NOT CLOSE (to purloin a well-known quotation) -- and be black-listed, no doubt !

At least, FELIX will not close unless this facility is lost, as has been threatened. More important, though less adventurous, is the present late deadline for Late News, even now less than three years old.

Correspondence has been held over until the next issue of FELIX, out on WEDNESDAY, 11 MAY 1966

F E L I X

EDITOR D I WILLIAMS
Assistant Peter Combes
Business/Production Tony Firshman
News John Grout
Richard Mitchell
Photographic Colin Harrison
Also in this issue Mike Smith, Pete Wallum, Richard Davies, Elizabeth Rankin, Frank Fuchs, Les Johnson and Rick Wharton.

S O U T H S I D E F I R E

P R E C A U T I O N S S A F E

SOUTHSIDE is now 100% safe. Mr Anthony, the College Fire Officer, says that the Southside fire precautions are now in full working order after extensive repairs over Easter carried out by the College maintenance department despite their inability to obtain wiring diagrams from the contractors who installed the original system (Mr Seaford, the Domestic Bursar, commented, "We expect this for new buildings !")

At a test this morning (Tuesday) in the presence of the Domestic Bursar and the Fire Officer the notorious Balcony gates worked perfectly, and will now be kept locked except in emergency.

Mr Anthony told FELIX that a fire practice would probably be held during this term, and that apart from one or two instances of fire alarm bells being wedged with paper, he was well-pleased with the co-operation received from students in the matter of fire safety. "The important thing," he said, "is that we should keep the boys' confidence."

A N O C T O P U S L A R G E R
T H A N L I F E ?

A LARGE OCTOPUS, healthy sun tans, & a great deal of experience were gained by the members of the Underwater Club's expedition to the South of France over Easter.

The party camped at La Ciotat, between Marseille and Toulon, where conditions for diving were excellent --visibility up to 100 ft.

During the eight days of diving, spear-fishing became very popular -- catches consisting mainly of squid, cuttlefish and octopus. Two members of the party were very successful in finding octopus and they teamed up. They found one which was larger than they bargained for, and proved too strong to invert under water; with its tentacles round both of them they had to make for the cliffs and kill it out of water -- at full stretch it was nearly five feet long.

S E N N E T S A L E S D O W N

SALES OF SENNET, the ULU newspaper, have fallen from 6000 at the beginning of the year to some 3000 last term -- figures almost identical to last year. At IC, which achieves the largest sale of any of the Colleges, last term's sales were down to 600 copies; at LSE only 100 per issue were being sold. Meanwhile sales of FELIX have gone up over the Christmas term to achieve record sales in Lent.

4
 MIKE WILL NOT BE
 INSTALLED UNTIL
 NEXT YEAR

THE NEW COLLEGE MASCOT, a giant micrometer ("graduated in degrees") will now not be installed in its place of honour in the Lower Lounge until "the long Vacation".

Due to the inability to assemble sufficient people together during the Easter vacation, IC's Wooden Horse Club are still maintaining Mike's security without the complicated alarm systems of the lower lounge pedestal, on which work is still proceeding.

It should be installed ready for Fresher's Day next session.

 J E Z O N T H E R O A D

RCS'S MOBILE MASCOT Jezebel is to go to Brighton on Sunday when she takes part in the Historic Commercial Vehicles' annual run.

Jez, recently repaired after breaking down in a run to Brighton several years ago, has taken to the road for the first time in her new livery (not fire-engine red but her original colour) over Easter, and RCS Motor Club is very pleased with her -- "She is behaving extremely well."

On Sunday Jez leaves Prince Consort Road at 8 am and leaves for Brighton from Clapham Transport Museum at 9 am.

sport

I C P U T U P G O O D
 S H O W I N H E A D O F
 R I V E R R A C E

THE RACE for which the training programme of the whole term geared took place on 19 March at 4 pm on the Thames from Mortlake to Putney.

335 crews entered, IC supplying seven of these.

The race was won by the Tideway Scullers School in an amended time of 18 mins 14 secs, beating by 22 secs the Oxford second boat; and by 33 secs the Cambridge second boat.

IC put up a good show and provisional results are as follows:

	start	finish	
IC I	30	25	
IC II	63	41	
IC III	111	98	
Overall provisional positions were:			
	start	finish	time
Tideway Scullers I	1	1	18m 18s
Isis I	8	2	18m 40s
Tideway Scullers II			
contd p5 col 2)	6	3	18m 46s

CCCC C C C
 C C C C C C C C C
 C C C C C C C C C
 C C C C C C C C C
 C C C C C C C C C
 CCCC CCC C C C C C CCC C

S A T U R D A Y

CARNIVAL HOP

Starting the Week, this special Hop stars "The Elite" from London and "The Children" from the North. The Hop starts at 8 pm and there is continuous dancing till 11. Cost 4/- each.

M O N D A Y

INTERNATIONAL EVENING

This is a pleasant, social evening with exotic international food, music and dancing. Folk singing and dancing from many countries in the Concert Hall, international foods in the Refectory, and dancing to a steel band in the Upper Refectory.

Cost 5/-, time 7.30 pm

T U E S D A Y

CARNIVAL FOLK CONCERT

Starting at 7.30 pm in the Concert Hall will be the climax of this year's successful folk season. The star-studded bill is headed by Tom Paley and Bill Clifton. This pair will be ably supported by Derek Hall, The Trunkles, The White City Ramblers (IC's own group).

All this for only 4/-; see you there }.

W E D N E S D A Y

CARNIVAL STOMP

Southside Stomps have already established themselves as the best of their kind in London, and to-night's bill will even heighten their popularity.

Playing jazz for all tastes will be:

- The Clive Heath Trio
- The Splinter Group
- New Jazz Quartet
- and IC's Jump Band.

The best of music, three hours of uninterrupted dancing in an atmosphere unrivalled elsewhere for only 4/-. 8 pm Southside -- that's the place to be !

THE LATE LATE SHOW

Relax after dancing with the bird, viewing "Only Two Can Play" and

'The Ipress File', two films especially chosen for tonight's LATE FILM FESTIVAL. This starts at half eleven in the concert hall.

As a special innovation there will be a second, earlier performance this year. This, we hope, will cater for those who would have had to return to their landladies and thus have missed the experience.

This earlier program begins at 7.30 pm.

THURSDAY &

FRIDAY

CARNIVAL REVUE

Surely the event of Carnival week which must not be missed is the Revue, performed by members of the Dramatic Society. Under the production of Brenda Chant, who must surely be in line for an Oscar for her revue successes, Material from people such as Ron Moody, Eric Sykes and Walter Plinge has been moulded into a West End standard Revue. One point: at the moment it has no title - a free ticket for anyone to give us one. Don't forget!

SATURDAY

THE PROCESSION

A grand procession of seventeen vehicles will tour round Chelsea and Kensington (or should it now be Chelsington?) displaying the activities going on here at College. Our magazine 'Tangent' will of course display the route and further details.

This year we are hoping to exceed all previous efforts and to help in this gigantic undertaking please call along at the Carnival Office or contact any one concerned with the carnival. All help is very welcome, especially from those wanting to be collectors (would they this time avoid all contact with the law).

Come along and make this the very greatest Procession of all time.

THE FETE

... will be opened at 11.30 on the return of the Procession to Prince's Gardens. Do come along and support the stalls, rather than the ice-cream vendors. Your Society or organisation will want help with its stall.

GRAND FINALE

This is the climax of the weeks activities and to celebrate it in the most appropriate way, 'The Barron Knights' will provide the sound for the dancing. They have many times hit the top ten, and are famed for their appearance on stage as much as for their excellent music.

The evening starts at eight, for 10/6 each, in the Union.

HEAD OF RIVER

(continued from p 4)

	start	finish	time
Nautilus I	4	4	18m 49s
Goldie	14	5	18m 51s
Emmanuel School I	18	6	18m 52s

Nautilus I is the British national crew, and Emmanuel School is in fact a public school crew; not as Tideway Scullers School, which is just the club name.

Some measure of the success of Emmanuel School is found in the fact that they beat Tyrrian, the UL second boat. They also won the Junior-Senior pennant, and were the fastest school, and the first school crew ever to finish in the first ten.

This was the fortieth anniversary of the race.

The full regatta season begins in April, and the Boat Club hopes to have more successes to report, showing the continuation of this most successful year. ERC

UNIVERSITY IN

SOUTH KENSINGTON

EXTRACT FROM A LETTER TO THE TIMES
22 April

...the great technological institutions in the United States and on the continent of Europe are proud of their distinctive names. I haven't yet heard of a move to change MIT into a University of Cambridge, or Cal Tech into a University of Pasadena, and I hope that we will never see a University of South Kensington.

Yours faithfully,

N Kurti

University of Oxford

SMALL AD

LIFT required to Madrid or almost anywhere else in Spain. Must arrive by 9 July. Will help pay petrol costs. Any offer to P M Combes via Union Rack.

F
 F
 F
 F
 FF FF F F F F F F F F F F F F F F F F F F F

THURSDAY 28

FELIX Staff Meeting. Press Room 1.15

FRIDAY 29

Carnival Lunch. Come for a snack or beer/coffee & listen to Jazz & folk. Concert Hall 1-2 pm, 2/=

MATHS. & Physics Society. 'The Evidence of Psychical Research' by Mr. Ellison, a council member of the Society for Psychical Research and Senior lecturer at QMC. At 5.15 Physics Lecturer Theatre, followed by Annual Dinner.

SATURDAY 30

Application forms for residence in IC Halls of Residence next year HAVE TO BE IN TODAY!

IC ENTS. HOP, with Mark Barry in the Concert Hall and Clive Heath in the Upper Refec. 8-11 pm.

WEEK'S HALL party - at 8 with bar - women free.

ST. BARTHOLEMEW'S Hospital Dance at College Hall, Charterhouse Square, E.C.1, with the Remainz, from 8-11.

SUNDAY 1

POOH Club Expedition to Hampton Court to find bridge for Pooch sticks practice. All Pooch people and cars welcome! For details see G. Hughes, Tizard 555 or Union Rack.

ANGLICAN Chaplaincy Eucharist 9 am at St. Augustines, Queen's Gate. Please Bring project 777. Lent Boxes. 7.30, Evensong.

JAZZ & FOLK in the Union lower lounge provided by IC Jazz and Folk Clubs at 8.

MONDAY 2

IC CHRISTIAN Union 'The love of God' - Rev. C. G. E. Bridgeland, 1.10 in Aero 266. Refreshments available

ANGLICAN Chaplaincy Christian open meeting at 1.10 room 303 Mine's Extension.

WEDNESDAY 4

WEST LONDON Anglican Chaplaincy - Eucharist 8.30, Concert Hall.

CATHOLIC Society. Mass in 11 Prince's Gardens at 8.55 am.

FFF F F
 F F FF F
 F F F F F
 F F F FF
 FFF F F

Compiled by

Mike Smith

TUESDAY 3

FELIX staff meeting. Press Room 1.15.

INAUGURAL Lecture. Prof. J. W. Dungey will lecture on 'The magnetosphere' at 5.30 in lecture theatre Am Mezah Eng. All welcome.

THURSDAY 5

FELIX staff meeting Press Room 1.15

FRIDAY 6

CARNIVAL Lunch. Come along to the Union Concert Hall for both a snack with coffee and music, Jazz and Folk Concert Hall 1-2 pm, 2/=

ISLAMIC Prayers today and every Friday, Islamic Prayers will be held at 1.30 in 11 Prince's Gate.

MAY BALL. This year's May Ball will happen at ahlf nine tonight till five tomorrow morning in the Union. Features will be the Sounds Incorporated, Monty Sunshine, the Skyliners, Jazz Congress, Ken Gibson Big Band, and the Spinners in Cabaret. Evening Dress. Tickets £3 double including meals.

Saturday 7

CARNIVAL WEEK STARTS HERE!

SUNDAY 8

WEST London Anglican Chaplaincy Sung Eucharist 9.am. Evensong 7.30, St. Augustine's Queen's Gate.

JAZZ AND FOLK in the Union Lower Lounge, provided by IC Jazz and Folk Clubs at 8

Monday 9

ANGLICAN Chaplaincy. Christian open meeting Room 303 Mines Extn., at 1.10 pm.

IC Christian Union Meeting at 1.10 in Aero 266. Refreshments available.

TUESDAY 10th

FELIX Staff meeting Press Room 1.15

Wednesday 11

WEST LONDON Anglican Chaplaincy Eucharist 8.30, Concert Hall.

Catholic Society Mass, 8.55, 11 Prince's Gardens.



The Duke of Edinburgh meets an Eagle Owl after opening the Observer Magazine Wild Life Exhibition at Alexandra Palace, London. With the Duke is Dr. H. R. Hewer (left), chairman of the Council for Nature, and Professor of Zoology at Imperial College. (photo by David Newell Smith, courtesy of The Observer)

Jerry Stockbridge

I CAME BACK ON SUNDAY, having parked my rhombus-shaped car in the new rhombic parking places, I was quick to notice hordes of overalled people busily ringing alarms and mending certain wellknown te-locks. Now you and I know that the average English dual operative expects at least time-and-a-half on Sundays, and with little imagination you can estimate the price the College has had to pay to preserve the Palmouth and Keogh cushions. Surely it would have been cheaper to let repay anyone who had anything stolen, or were the locks installed for other reasons? In talking of cost, where's the new Hall to be built in the roadside car park? I expect soon to see certain well-known roof-dwellers with their sleeves rolled up and wielding their spades — and on, no doubt, by some football players. Or perhaps the loved one cannot afford it now, having spent much on locks.

Friendship leads to another upset

NEW EDITORS have been appointed for SENNET after the discovery that Tim Gopsill & Brigid White, made joint editors in the closing weeks of last term, were friends of Frank Fuchs (Physics PG at

IC) and Maggie Butterworth (LSE) who were dismissed at the last ULU Council Meeting.

Gopsill and White have, like their predecessors, been banned from the SENNET Office, with the resignations of other members of SENNET staff, only three senior members remain at Malet Street — the new Editors, Eric Chapman (a first year IC engineer) and Chris Lockie (SOAS), and Mike Eysenck who is a likely contender for the Editor's chair in another shake-up.

Strong supporter ?

HALF OF IMPERIAL COLLEGE already belongs to NUS. NUS would be financially out of pocket if IC resolved to join the national organisation. This is because NUS now receives three times the annual subscription every year from individual members, NUS claim —ed to the student press over Easter.

The annual subscription of a student union to NUS is usually paid for by a levy separate from the normal Union fee (this works out at about 2/6 per student), and IC Union would be out of pocket only for the period until the next review of the Union fee. NUS however would lose some hundreds of pounds per year (the individual fee is £1).

Refused entry

FELIX reporter Frank Fuchs was refused credentials to NUS Council, because IC is not affiliated and because he personally is known as a severe critic of NUS Exec. A number of delegations tried to question this decision, but were steamrollered by the expert chairmanship of Bill Savage.

Prior to the Council Fuchs had been working at Harwell. An NUS spokesman described him as "a security risk".

Sennet among the ten best

PLACES in the top ten of this year's Sunday Mirror Cup competition have been awarded to SENNET and BEAVER (London School of Economics). The competition, to find the best student newspaper among the universities and colleges affiliated to NUS, was decided on the basis of three issues nearest a date in March -- under the respective editorships of Frank Fuchs and Jon Smith.

It was won by Cambridge's VARSITY, with Oxford's CHERWELL 2nd. These papers have the advantage of size, the large volume of advertising they attract enabling them to maintain a strong balance of news and features, and providing much scope for experiment in page layout.

The formation of a student press association within NUS may allow newspapers such as FELIX from colleges not affiliated to NUS to take part in the competition in future years.

The ACE extension nears completion

Strathclyde Doctorate

PROF. M.J. LIGHTHILL, Royal Society Research Professor at I.C. and a vice-President of the Royal Society, was awarded the honorary degree of D.Sc. at the Commemoration Day ceremony of the University of Strathclyde, on 15 April.

Another honour for Blakett

PROFESSOR A.J.S. PIPPARD, Emeritus Professor of Civil Engineering and Professor P. M.S. Blakett, President of the Royal Society, and Prof. of Physics at I.C. will be awarded the honorary degrees of LL.D. and D.Sc., on May 19th, by the Duke of Beaufort, recently appointed Chancellor of the University of Bristol, despite strong opposition from the student body.

President-elect wants a coffee bar

CHRIS MOLAM, President-elect of Mines Union, would like to see a coffee bar in the Mines Building for the use of members of RSMU. This could be open all day as opposed to Mooney's snack bars, neither of which is open for more than part of the day.

He feels this would not only help "Mines spirit" but be highly convenient as all Minesmen would be within a few yards of the coffee shop. The difficulty seems to be finding a room to accommodate it. /Pete Wallum

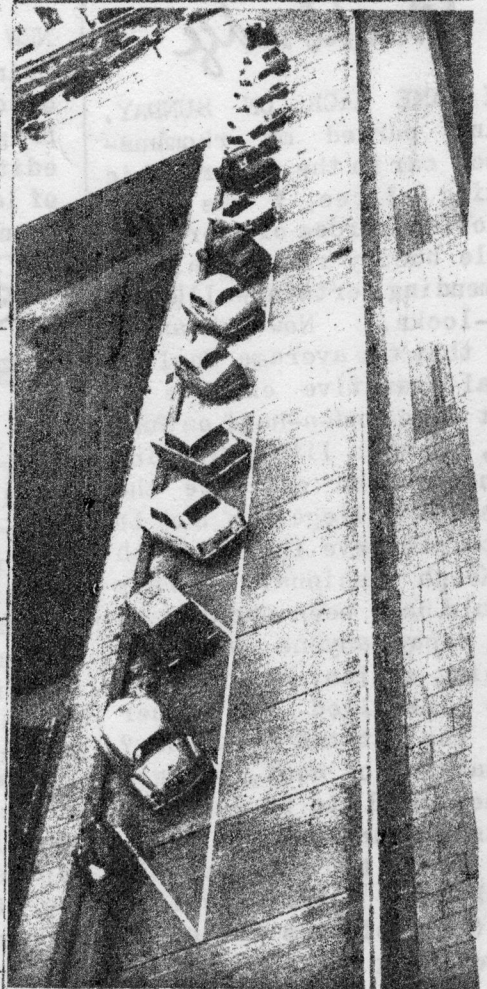
Ministry consultant

PROF. S. GILL, Professor of Computing Science in the Electrical Engineering Dept, has been appointed a part-time consultant in computers at the Ministry of Technology.

Ball-game deterrent

MESSENGERS and Security Guards have been instructed to deter would-be players of football, cricket and other ball games on the paved area between the calorifier and the senior common room, Southside.

Published by D.I. Williams on behalf of the FELIX BOARD, Imperial College, SW7, and printed by F D S.



Loads of space in Southside Car Parking Committee's new diagonal parking scheme.

LAMLEY'S

TECHNICAL & GENERAL BOOKS

ART MATERIALS

DRAWING INSTRUMENTS

STATIONERY

PAPERBACKS

1, 3 & 5 EXHIBITION ROAD,
LONDON, S.W.7

XXXXX XXXXX X X X X X X XXXXX X X X
 X X X X X X X X X X X X X X X
 XXX XXX X X X X XXXXX X XXX X X X XXX X X X
 X X X X X X X X X X X X X X X X X
 XX XXXXX XXXXX X X X XXXXX X X X XXXXX X X X S.

Editor - T. Doe.

EXPLORATION BOARD TO CHANGE ITS NAME?

Recently an expedition was planned and presented to the Exploration Board for approval and financial support, but in the correspondence that followed, it was made clear by the Board that it no longer saw its function as a promoter of expeditions in the true sense of the word, and as this expedition was somewhat off the beaten track and might be dangerous, the Board felt that it could not give its support unless the plans were modified.

Isn't it sad, in this day and age, when youth is supposed to be more free and adventurous than at any other time in history, that I.C. Exploration Board should be so backward looking. The Duke of Edinburgh Award Schemes are no picnic, and yet no-one suggests they should be stopped. The Board seems to see its function as one of promoting scientific study abroad, but any student who has this leaning can do his Ph D abroad, or take full advantage of N.U.S. and other organisations running trips overseas in the long vacations. There are many places of interest in the world which are worth mounting purely exploratory expeditions to and which would not necessarily have to have scientific reason - anyway isn't this what climbing expeditions are?

T.D.

I.C.C.N.D. PEACE OFFENSIVE

To mark the opening of the I.C.C.N.D. Peace Offensive week (May 23rd. to 27th) a debate was held in the I.C. concert hall on the motion "International Affairs are the Concern of Every British Student". The motion was proposed by M. Duckett, who spoke mainly about Vietnam and the students moral obligation to support a demand for peace. T. Doe speaking in opposition, based his arguments on the point of view that University students were not mature enough and lacking in the knowledge to be able to form and pass sensible opinions. There followed a long discussion from the floor, and when a vote was taken, the motion was passed. Poor attendance of this meeting again underlined the apathy of I.C. students to anything outside their own lives.

T.D.

FOR SALE.

A red and white Lambretta scooter in good working order. M.O.T. certificate recently acquired, taxed until the end of September. Accessories - Spare wheel and carrier. £45 or near offer. Apply N. Pleaden, Zoology 2.

Quote

Quote from one of this years executive - "Anything to keep Guy out"

NOMINATIONS FOR ELECTION AT I.C.A.G.M. ON THURSDAY 26th MAY.

FLOOR REPS. - 6 members

Nominee

Proposed by:-

Mike Wilson
Derek Boothman
Dave Rayner
Dave Poulter
Pam Pocock
A.M. Smith
B.A. Parker
Pete Finch
J. O'Reilly
David Reich

M. Edwards.
K. Cavanagh
C. Molam
E. Fortune
Tony Duke.
R. A. Potts.
P.H. Coslett
Dave Christopher.
R. Gash
Dai Howell

Alan Laffertey

F. Fuchs (Insufficient 2nders.)

ENTS. - 5 members

Mike Smith
Pete Boldon
Pete Havercan
Dave Gray
John Berridge
M.J. Lack

Pete Roberts
Jim Murray
G.J. Davies
Paul Coslett
Jim Murray
R. M.Conn

SHORTS.

Mr. Mooney is suffering from a shortage of waitresses in the main dining hall, Southside, and so are his clients.

SCOTT DEFEATED.

Despite an attempt by Mike Scott to prevent it, a Felix reporter was allowed into the R.C.S. General Committee meeting last week. Scott said " I'm fed up with Felix poking its b..... nose in our business," and at the start of the meeting requested the Felix reporter to leave. He also cautioned T. Doe, Zoo dept. rep., that he was there as a rep. and not as a member of Felix staff. K. Cavanagh questioned this action and was supported by F. Fuchs and Frank Allen, with the result that the Felix reporter was recalled after a vote had been taken.

F.R.

I.C. UNION EXECUTIVE NOMINATIONS.

PRESIDENT

Nominee.

Keith Guy.
Tony Duke

HON. SEC.

Roger Chappell
Brendon Parker

Proposer

Peter Finch.
Chris Molam

Tony Duke.
Paul Coslett.

ENTRY FORM

Name :

Department and Year :

The Categories : (Strike out those which do not apply)

PAINTING

SCULPTURE

MUSIC

ROBOTS

INVENTIONS

SCIENCE FICTION

TIME CAPSULE PREDICTIONS

POETRY

FILMS and PHOTOGRAPHY

ANYTHING ELSE

Details of Exhibit :-

Height:..... Length:..... Width:..... Weight:.....

Power Consumption:.....

Running time (for films etc)

Any other details:

Closing date is October 21st 1966.

Send your forms to the organiser :-

C. E PHILLIPS

TIZARD HALL

Exhibits must comply with G.L.C. fire regulations and must be brought to Mech. Eng. Concourse Area on Sunday 6th November and be removed by Sunday 13th November.



£50 TO BE WON !

A total of £50 in prize money has been offered by Mr A.H.K. Smith, Managing Director of Johnson's Ethical Plastics Ltd, for the best exhibits in The H.G. Wells Centenary Exhibition. For full details see below. The entry form is overleaf; one form must be submitted for each exhibit. Exhibitors will be invited to meet the judges at a special party on November 11th.

Other prizes will be given for the best entries in each category of ;



THE H.G. WELLS CENTENARY EXHIBITION

The Imperial College H.G. Wells Society is planning to celebrate the centenary of Wells's birth with a Wells week, November 7th to 11th. The week will include a dinner, lectures, four films, and an exhibition called :



"THE ART OF SCIENCE"

Members of Imperial College Union are invited to submit for this exhibition works of art inspired by science, incorporating the apparatus of science, or produced scientifically. Whilst it is not intended to restrict entries in any way, the following categories have been devised as a guide. The judge(s) chosen for each category are named below :



PAINTING . Paintings inspired by scientific achievement (e.g. space pictures) or works of art made with paint .
Judge : Trewin Copplestone .



SCULPTURE . Three dimensional shapes produced using engineering techniques or materials . Shapes may be made up of moving assemblies of objects .
(Kinetic art .)
Judge : D. Medalla . (Signals Gallery)



MUSIC . Electronic music ; musique concrète ; computer compositions : etc .
Judge : Alan Ridout . (Royal College of Music .)



ROBOTS . Any form of thinking or doing machine , or electronic or mechanical simulator .
Judge : W. Grey Walter . (Burden Neurological Int.)



INVENTIONS . New gadgets , both useful and useless .
Judge : Alex Moulton . (Moulton Bicycles Ltd)



SCIENCE FICTION . Stories about people affected by scientific innovations .
Judges : John Wyndham ; Brian Aldiss ; Kingsley Amis .



TIME CAPSULE PREDICTIONS . Your prophecies for the next 20 years .
Judge ; The Rector in 20 yrs time .



POETRY . Poems inspired by science or written by machine .
Judges : As for Science Fiction .



FILMS AND PHOTOGRAPHY . Static / cine . Audio effects .
Judge : Dr Glaister . (mech eng)



ANYTHING ELSE Not covered by the above . Judges : All the preceding ones .

1866.. H.G. WELLS CENTENARY.. 1966.